

# Whitehouse Brighton

An original Art Deco detached beach house, built in 1930. On a shingle beach but with some sand at low tide. The house has direct beach access from the south facing garden and overlooks the English Channel with far reaching panoramic views. Brighton is the nearest city and is 5 miles to the east along the coast. It's an easy commute from central London by train to Shoreham by Sea station (approx 1 hour by fast train from Victoria) The station is a 5 minute taxi ride from the house. The large pool (10 x 5.5 metres) is open and maintained all year and is heated to 28 degrees (even when there is snow on the ground!). The planting in the garden is Mediterranean style evergreen so looks the same all year - palm trees, New Zealand flax etc and the ancient 135 yr old olive tree.





## Whitehouse Brighton

An original Art Deco detached beach house, built in 1930. On a shingle beach but with some sand at low tide. The house has direct beach access from the south facing garden and overlooks the English Channel with far reaching panoramic views. Brighton is the nearest city and is 5 miles to the east along the coast. It's an easy commute from central London by train to Shoreham by Sea station (approx 1 hour by fast train from Victoria). The station is a 5 minute taxi ride from the house. The large pool (10 x 5.5 metres) is open and maintained all year and is heated to 28 degrees (even when there is snow on the ground!). The planting in the garden

**CAROL HAYES**  
**MANAGEMENT**

020 7482 1555

[www.carolhayesmanagement.co.uk](http://www.carolhayesmanagement.co.uk)



## Whitehouse Brighton

An original Art Deco detached beach house, built in 1930. On a shingle beach but with some sand at low tide. The house has direct beach access from the south facing garden and overlooks the English Channel with far reaching panoramic views. Brighton is the nearest city and is 5 miles to the east along the coast. It's an easy commute from central London by train to Shoreham by Sea station (approx 1 hour by fast train from Victoria). The station is a 5 minute taxi ride from the house. The large pool (10 x 5.5 metres) is open and maintained all year and is heated to 28 degrees (even when there is snow on the ground!). The planting in the garden

**CAROL HAYES**  
MANAGEMENT

020 7482 1555

[www.carolhayesmanagement.co.uk](http://www.carolhayesmanagement.co.uk)



## Whitehouse Brighton

An original Art Deco detached beach house, built in 1930. On a shingle beach but with some sand at low tide. The house has direct beach access from the south facing garden and overlooks the English Channel with far reaching panoramic views. Brighton is the nearest city and is 5 miles to the east along the coast. It's an easy commute from central London by train to Shoreham by Sea station (approx 1 hour by fast train from Victoria). The station is a 5 minute taxi ride from the house. The large pool (10 x 5.5 metres) is open and maintained all year and is heated to 28 degrees (even when there is snow on the ground!). The planting in the garden

**CAROL HAYES**  
**MANAGEMENT**

020 7482 1555

[www.carolhayesmanagement.co.uk](http://www.carolhayesmanagement.co.uk)





## Whitehouse Brighton

An original Art Deco detached beach house, built in 1930. On a shingle beach but with some sand at low tide, the house has direct beach access from the south facing garden and overlooks the English Channel with far reaching panoramic views. Brighton is the nearest city and is 5 miles to the east along the coast. It's an easy commute from central London by train to Shoreham by Sea station (approx 1 hour by fast train from Victoria). The station is a 5 minute taxi ride from the house. The large pool (10 x 5.5 metres) is open and maintained all year and is heated to 28 degrees (even when there is snow on the ground!). The planting in the garden

**CAROL HAYES**  
**MANAGEMENT**

020 7482 1555

[www.carolhayesmanagement.co.uk](http://www.carolhayesmanagement.co.uk)



## Whitehouse Brighton

An original Art Deco detached beach house, built in 1930. On a shingle beach but with some sand at low tide, the house has direct beach access from the south facing garden and overlooks the English Channel with far reaching panoramic views. Brighton is the nearest city and is 5 miles to the east along the coast. It's an easy commute from central London by train to Shoreham by Sea station (approx 1 hour by fast train from Victoria). The station is a 5 minute taxi ride from the house. The large pool (10 x 5.5 metres) is open and maintained all year and is heated to 28 degrees (even when there is snow on the ground!). The planting in the garden

**CAROL HAYES**  
MANAGEMENT

020 7482 1555

[www.carolhayesmanagement.co.uk](http://www.carolhayesmanagement.co.uk)



## Whitehouse Brighton

An original Art Deco detached beach house, built in 1930. On a shingle beach but with some sand at low tide, the house has direct beach access from the south facing garden and overlooks the English Channel with far reaching panoramic views. Brighton is the nearest city and is 5 miles to the east along the coast. It's an easy commute from central London by train to Shoreham by Sea station (approx 1 hour by fast train from Victoria). The station is a 5 minute taxi ride from the house. The large pool (10 x 5.5 metres) is open and maintained all year and is heated to 28 degrees (even when there is snow on the ground!). The planting in the garden

**CAROL HAYES**  
**MANAGEMENT**

020 7482 1555

[www.carolhayesmanagement.co.uk](http://www.carolhayesmanagement.co.uk)





## Whitehouse Brighton

An original Art Deco detached beach house, built in 1930. On a shingle beach but with some sand at low tide, the house has direct beach access from the south facing garden and overlooks the English Channel with far reaching panoramic views. Brighton is the nearest city and is 5 miles to the east along the coast. It's an easy commute from central London by train to Shoreham by Sea station (approx 1 hour by fast train from Victoria). The station is a 5 minute taxi ride from the house. The large pool (10 x 5.5 metres) is open and maintained all year and is heated to 28 degrees (even when there is snow on the ground!). The planting in the garden

**CAROL HAYES**  
**MANAGEMENT**

020 7482 1555

[www.carolhayesmanagement.co.uk](http://www.carolhayesmanagement.co.uk)





## Whitehouse Brighton

An original Art Deco detached beach house, built in 1930. On a shingle beach but with some sand at low tide, the house has direct beach access from the south facing garden and overlooks the English Channel with far reaching panoramic views. Brighton is the nearest city and is 5 miles to the east along the coast. It's an easy commute from central London by train to Shoreham by Sea station (approx 1 hour by fast train from Victoria). The station is a 5 minute taxi ride from the house. The large pool (10 x 5.5 metres) is open and maintained all year and is heated to 28 degrees (even when there is snow on the ground!). The planting in the garden

**CAROL HAYES**  
**MANAGEMENT**

020 7482 1555

[www.carolhayesmanagement.co.uk](http://www.carolhayesmanagement.co.uk)



## Whitehouse Brighton

An original Art Deco detached beach house, built in 1930. On a shingle beach but with some sand at low tide, the house has direct beach access from the south facing garden and overlooks the English Channel with far reaching panoramic views. Brighton is the nearest city and is 5 miles to the east along the coast. It's an easy commute from central London by train to Shoreham by Sea station (approx 1 hour by fast train from Victoria). The station is a 5 minute taxi ride from the house. The large pool (10 x 5.5 metres) is open and maintained all year and is heated to 28 degrees (even when there is snow on the ground!). The planting in the garden

**CAROL HAYES**  
**MANAGEMENT**

020 7482 1555

[www.carolhayesmanagement.co.uk](http://www.carolhayesmanagement.co.uk)



## Whitehouse Brighton

An original Art Deco detached beach house, built in 1930. On a shingle beach but with some sand at low tide. The house has direct beach access from the south facing garden and overlooks the English Channel with far reaching panoramic views. Brighton is the nearest city and is 5 miles to the east along the coast. It's an easy commute from central London by train to Shoreham by Sea station (approx 1 hour by fast train from Victoria). The station is a 5 minute taxi ride from the house. The large pool (10 x 5.5 metres) is open and maintained all year and is heated to 28 degrees (even when there is snow on the ground!). The planting in the garden

**CAROL HAYES**  
**MANAGEMENT**

020 7482 1555

[www.carolhayesmanagement.co.uk](http://www.carolhayesmanagement.co.uk)





## Whitehouse Brighton

An original Art Deco detached beach house, built in 1930. On a shingle beach but with some sand at low tide, the house has direct beach access from the south facing garden and overlooks the English Channel with far reaching panoramic views. Brighton is the nearest city and is 5 miles to the east along the coast. It's an easy commute from central London by train to Shoreham by Sea station (approx 1 hour by fast train from Victoria). The station is a 5 minute taxi ride from the house. The large pool (10 x 5.5 metres) is open and maintained all year and is heated to 28 degrees (even when there is snow on the ground!). The planting in the garden

**CAROL HAYES**  
**MANAGEMENT**

020 7482 1555

[www.carolhayesmanagement.co.uk](http://www.carolhayesmanagement.co.uk)





## Whitehouse Brighton

An original Art Deco detached beach house, built in 1930. On a shingle beach but with some sand at low tide, the house has direct beach access from the south facing garden and overlooks the English Channel with far reaching panoramic views. Brighton is the nearest city and is 5 miles to the east along the coast. It's an easy commute from central London by train to Shoreham by Sea station (approx 1 hour by fast train from Victoria). The station is a 5 minute taxi ride from the house. The large pool (10 x 5.5 metres) is open and maintained all year and is heated to 28 degrees (even when there is snow on the ground!). The planting in the garden

**CAROL HAYES**  
**MANAGEMENT**

020 7482 1555

[www.carolhayesmanagement.co.uk](http://www.carolhayesmanagement.co.uk)



## Whitehouse Brighton

An original Art Deco detached beach house, built in 1930. On a shingle beach but with some sand at low tide. The house has direct beach access from the south facing garden and overlooks the English Channel with far reaching panoramic views. Brighton is the nearest city and is 5 miles to the east along the coast. It's an easy commute from central London by train to Shoreham by Sea station (approx 1 hour by fast train from Victoria). The station is a 5 minute taxi ride from the house. The large pool (10 x 5.5 metres) is open and maintained all year and is heated to 28 degrees (even when there is snow on the ground!). The planting in the garden

**CAROL HAYES**  
**MANAGEMENT**

020 7482 1555

[www.carolhayesmanagement.co.uk](http://www.carolhayesmanagement.co.uk)





## Whitehouse Brighton

An original Art Deco detached beach house, built in 1930. On a shingle beach but with some sand at low tide, the house has direct beach access from the south facing garden and overlooks the English Channel with far reaching panoramic views. Brighton is the nearest city and is 5 miles to the east along the coast. It's an easy commute from central London by train to Shoreham by Sea station (approx 1 hour by fast train from Victoria). The station is a 5 minute taxi ride from the house. The large pool (10 x 5.5 metres) is open and maintained all year and is heated to 28 degrees (even when there is snow on the ground!). The planting in the garden

**CAROL HAYES**  
MANAGEMENT

020 7482 1555

[www.carolhayesmanagement.co.uk](http://www.carolhayesmanagement.co.uk)





## Whitehouse Brighton

An original Art Deco detached beach house, built in 1930. On a shingle beach but with some sand at low tide, the house has direct beach access from the south facing garden and overlooks the English Channel with far reaching panoramic views. Brighton is the nearest city and is 5 miles to the east along the coast. It's an easy commute from central London by train to Shoreham by Sea station (approx 1 hour by fast train from Victoria). The station is a 5 minute taxi ride from the house. The large pool (10 x 5.5 metres) is open and maintained all year and is heated to 28 degrees (even when there is snow on the ground!). The planting in the garden

**CAROL HAYES**  
MANAGEMENT

020 7482 1555

[www.carolhayesmanagement.co.uk](http://www.carolhayesmanagement.co.uk)





## Whitehouse Brighton

An original Art Deco detached beach house, built in 1930. On a shingle beach but with some sand at low tide, the house has direct beach access from the south facing garden and overlooks the English Channel with far reaching panoramic views. Brighton is the nearest city and is 5 miles to the east along the coast. It's an easy commute from central London by train to Shoreham by Sea station (approx 1 hour by fast train from Victoria). The station is a 5 minute taxi ride from the house. The large pool (10 x 5.5 metres) is open and maintained all year and is heated to 28 degrees (even when there is snow on the ground!). The planting in the garden

**CAROL HAYES**  
**MANAGEMENT**

020 7482 1555

[www.carolhayesmanagement.co.uk](http://www.carolhayesmanagement.co.uk)





## Whitehouse Brighton

An original Art Deco detached beach house, built in 1930. On a shingle beach but with some sand and a low tide, the house has direct beach access from the south facing garden and overlooks the English Channel with far reaching panoramic views. Brighton is the nearest city and is 5 miles to the east along the coast. It's an easy commute from central London by train to Shoreham by Sea station (approx 1 hour by fast train from Victoria). The station is a 5 minute taxi ride from the house. The large pool (10 x 5.5 metres) is open and maintained all year and is heated to 28 degrees (even when there is snow on the ground!). The planting in the garden

**CAROL HAYES**  
MANAGEMENT

020 7482 1555

[www.carolhayesmanagement.co.uk](http://www.carolhayesmanagement.co.uk)



## Whitehouse Brighton

An original Art Deco detached beach house, built in 1930. On a shingle beach but with some sand at low tide, the house has direct beach access from the south facing garden and overlooks the English Channel with far reaching panoramic views. Brighton is the nearest city and is 5 miles to the east along the coast. It's an easy commute from central London by train to Shoreham by Sea station (approx 1 hour by fast train from Victoria). The station is a 5 minute taxi ride from the house. The large pool (10 x 5.5 metres) is open and maintained all year and is heated to 28 degrees (even when there is snow on the ground!). The planting in the garden

**CAROL HAYES**  
**MANAGEMENT**

020 7482 1555

[www.carolhayesmanagement.co.uk](http://www.carolhayesmanagement.co.uk)





## Whitehouse Brighton

An original Art Deco detached beach house, built in 1930. On a shingle beach but with some sand at low tide, the house has direct beach access from the south facing garden and overlooks the English Channel with far reaching panoramic views. Brighton is the nearest city and is 5 miles to the east along the coast. It's an easy commute from central London by train to Shoreham by Sea station (approx 1 hour by fast train from Victoria). The station is a 5 minute taxi ride from the house. The large pool (10 x 5.5 metres) is open and maintained all year and is heated to 28 degrees (even when there is snow on the ground!). The planting in the garden

**CAROL HAYES**  
MANAGEMENT

020 7482 1555

[www.carolhayesmanagement.co.uk](http://www.carolhayesmanagement.co.uk)





## Whitehouse Brighton

An original Art Deco detached beach house, built in 1930. On a shingle beach but with some sand at low tide, the house has direct beach access from the south facing garden and overlooks the English Channel with far reaching panoramic views. Brighton is the nearest city and is 5 miles to the east along the coast. It's an easy commute from central London by train to Shoreham by Sea station (approx 1 hour by fast train from Victoria). The station is a 5 minute taxi ride from the house. The large pool (10 x 5.5 metres) is open and maintained all year and is heated to 28 degrees (even when there is snow on the ground!). The planting in the garden

**CAROL HAYES**  
MANAGEMENT

020 7482 1555

[www.carolhayesmanagement.co.uk](http://www.carolhayesmanagement.co.uk)



## Whitehouse Brighton

An original Art Deco detached beach house, built in 1930. On a shingle beach but with some sand at low tide, the house has direct beach access from the south facing garden and overlooks the English Channel with far reaching panoramic views. Brighton is the nearest city and is 5 miles to the east along the coast. It's an easy commute from central London by train to Shoreham by Sea station (approx 1 hour by fast train from Victoria). The station is a 5 minute taxi ride from the house. The large pool (10 x 5.5 metres) is open and maintained all year and is heated to 28 degrees (even when there is snow on the ground!). The planting in the garden

**CAROL HAYES**  
**MANAGEMENT**

020 7482 1555

[www.carolhayesmanagement.co.uk](http://www.carolhayesmanagement.co.uk)



## Whitehouse Brighton

An original Art Deco detached beach house, built in 1930. On a shingle beach but with some sand at low tide, the house has direct beach access from the south facing garden and overlooks the English Channel with far reaching panoramic views. Brighton is the nearest city and is 5 miles to the east along the coast. It's an easy commute from central London by train to Shoreham by Sea station (approx 1 hour by fast train from Victoria). The station is a 5 minute taxi ride from the house. The large pool (10 x 5.5 metres) is open and maintained all year and is heated to 28 degrees (even when there is snow on the ground!). The planting in the garden

**CAROL HAYES**  
MANAGEMENT

020 7482 1555

[www.carolhayesmanagement.co.uk](http://www.carolhayesmanagement.co.uk)





## Whitehouse Brighton

An original Art Deco detached beach house, built in 1930. On a shingle beach but with some sand at low tide, the house has direct beach access from the south facing garden and overlooks the English Channel with far reaching panoramic views. Brighton is the nearest city and is 5 miles to the east along the coast. It's an easy commute from central London by train to Shoreham by Sea station (approx 1 hour by fast train from Victoria). The station is a 5 minute taxi ride from the house. The large pool (10 x 5.5 metres) is open and maintained all year and is heated to 28 degrees (even when there is snow on the ground!). The planting in the garden

**CAROL HAYES**  
MANAGEMENT

020 7482 1555

[www.carolhayesmanagement.co.uk](http://www.carolhayesmanagement.co.uk)





## Whitehouse Brighton

An original Art Deco detached beach house, built in 1930. On a shingle beach but with some sand at low tide. The house has direct beach access from the south facing garden and overlooks the English Channel with far reaching panoramic views. Brighton is the nearest city and is 5 miles to the east along the coast. It's an easy commute from central London by train to Shoreham by Sea station (approx 1 hour by fast train from Victoria). The station is a 5 minute taxi ride from the house. The large pool (10 x 5.5 metres) is open and maintained all year and is heated to 28 degrees (even when there is snow on the ground!). The planting in the garden

**CAROL HAYES**  
**MANAGEMENT**

020 7482 1555

[www.carolhayesmanagement.co.uk](http://www.carolhayesmanagement.co.uk)



## Whitehouse Brighton

An original Art Deco detached beach house, built in 1930. On a shingle beach but with some sand at low tide, the house has direct beach access from the south facing garden and overlooks the English Channel with far reaching panoramic views. Brighton is the nearest city and is 5 miles to the east along the coast. It's an easy commute from central London by train to Shoreham by Sea station (approx 1 hour by fast train from Victoria). The station is a 5 minute taxi ride from the house. The large pool (10 x 5.5 metres) is open and maintained all year and is heated to 28 degrees (even when there is snow on the ground!). The planting in the garden

**CAROL HAYES**  
MANAGEMENT

020 7482 1555

[www.carolhayesmanagement.co.uk](http://www.carolhayesmanagement.co.uk)



## Whitehouse Brighton

An original Art Deco detached beach house, built in 1930. On a shingle beach but with some sand at low tide, the house has direct beach access from the south facing garden and overlooks the English Channel with far reaching panoramic views. Brighton is the nearest city and is 5 miles to the east along the coast. It's an easy commute from central London by train to Shoreham by Sea station (approx 1 hour by fast train from Victoria). The station is a 5 minute taxi ride from the house. The large pool (10 x 5.5 metres) is open and maintained all year and is heated to 28 degrees (even when there is snow on the ground!). The planting in the garden

**CAROL HAYES**  
**MANAGEMENT**

020 7482 1555

[www.carolhayesmanagement.co.uk](http://www.carolhayesmanagement.co.uk)





## Whitehouse Brighton

An original Art Deco detached beach house, built in 1930. On a shingle beach but with some sand at low tide, the house has direct beach access from the south facing garden and overlooks the English Channel with far reaching panoramic views. Brighton is the nearest city and is 5 miles to the east along the coast. It's an easy commute from central London by train to Shoreham by Sea station (approx 1 hour by fast train from Victoria). The station is a 5 minute taxi ride from the house. The large pool (10 x 5.5 metres) is open and maintained all year and is heated to 28 degrees (even when there is snow on the ground!). The planting in the garden

**CAROL HAYES**  
MANAGEMENT

020 7482 1555

[www.carolhayesmanagement.co.uk](http://www.carolhayesmanagement.co.uk)



## Whitehouse Brighton

An original Art Deco detached beach house, built in 1930. On a shingle beach but with some sand at low tide, the house has direct beach access from the south facing garden and overlooks the English Channel with far reaching panoramic views. Brighton is the nearest city and is 5 miles to the east along the coast. It's an easy commute from central London by train to Shoreham by Sea station (approx 1 hour by fast train from Victoria). The station is a 5 minute taxi ride from the house. The large pool (10 x 5.5 metres) is open and maintained all year and is heated to 28 degrees (even when there is snow on the ground!). The planting in the garden

**CAROL HAYES**  
**MANAGEMENT**

020 7482 1555

[www.carolhayesmanagement.co.uk](http://www.carolhayesmanagement.co.uk)



## Whitehouse Brighton

An original Art Deco detached beach house, built in 1930. On a shingle beach but with some sand at low tide, the house has direct beach access from the south facing garden and overlooks the English Channel with far reaching panoramic views. Brighton is the nearest city and is 5 miles to the east along the coast. It's an easy commute from central London by train to Shoreham by Sea station (approx 1 hour by fast train from Victoria). The station is a 5 minute taxi ride from the house. The large pool (10 x 5.5 metres) is open and maintained all year and is heated to 28 degrees (even when there is snow on the ground!). The planting in the garden

**CAROL HAYES**  
**MANAGEMENT**

020 7482 1555

[www.carolhayesmanagement.co.uk](http://www.carolhayesmanagement.co.uk)





## Whitehouse Brighton

An original Art Deco detached beach house, built in 1930. On a shingle beach but with some sand at low tide, the house has direct beach access from the south facing garden and overlooks the English Channel with far reaching panoramic views. Brighton is the nearest city and is 5 miles to the east along the coast. It's an easy commute from central London by train to Shoreham by Sea station (approx 1 hour by fast train from Victoria). The station is a 5 minute taxi ride from the house. The large pool (10 x 5.5 metres) is open and maintained all year and is heated to 28 degrees (even when there is snow on the ground!). The planting in the garden

**CAROL HAYES**  
**MANAGEMENT**

020 7482 1555

[www.carolhayesmanagement.co.uk](http://www.carolhayesmanagement.co.uk)



## Whitehouse Brighton

An original Art Deco detached beach house, built in 1930. On a shingle beach but with some sand at low tide, the house has direct beach access from the south facing garden and overlooks the English Channel with far reaching panoramic views. Brighton is the nearest city and is 5 miles to the east along the coast. It's an easy commute from central London by train to Shoreham by Sea station (approx 1 hour by fast train from Victoria). The station is a 5 minute taxi ride from the house. The large pool (10 x 5.5 metres) is open and maintained all year and is heated to 28 degrees (even when there is snow on the ground!). The planting in the garden

**CAROL HAYES**  
**MANAGEMENT**

020 7482 1555

[www.carolhayesmanagement.co.uk](http://www.carolhayesmanagement.co.uk)





## Whitehouse Brighton

An original Art Deco detached beach house, built in 1930. On a shingle beach but with some sand at low tide, the house has direct beach access from the south facing garden and overlooks the English Channel with far reaching panoramic views. Brighton is the nearest city and is 5 miles to the east along the coast. It's an easy commute from central London by train to Shoreham by Sea station (approx 1 hour by fast train from Victoria). The station is a 5 minute taxi ride from the house. The large pool (10 x 5.5 metres) is open and maintained all year and is heated to 28 degrees (even when there is snow on the ground!). The planting in the garden

**CAROL HAYES**  
MANAGEMENT

020 7482 1555

[www.carolhayesmanagement.co.uk](http://www.carolhayesmanagement.co.uk)





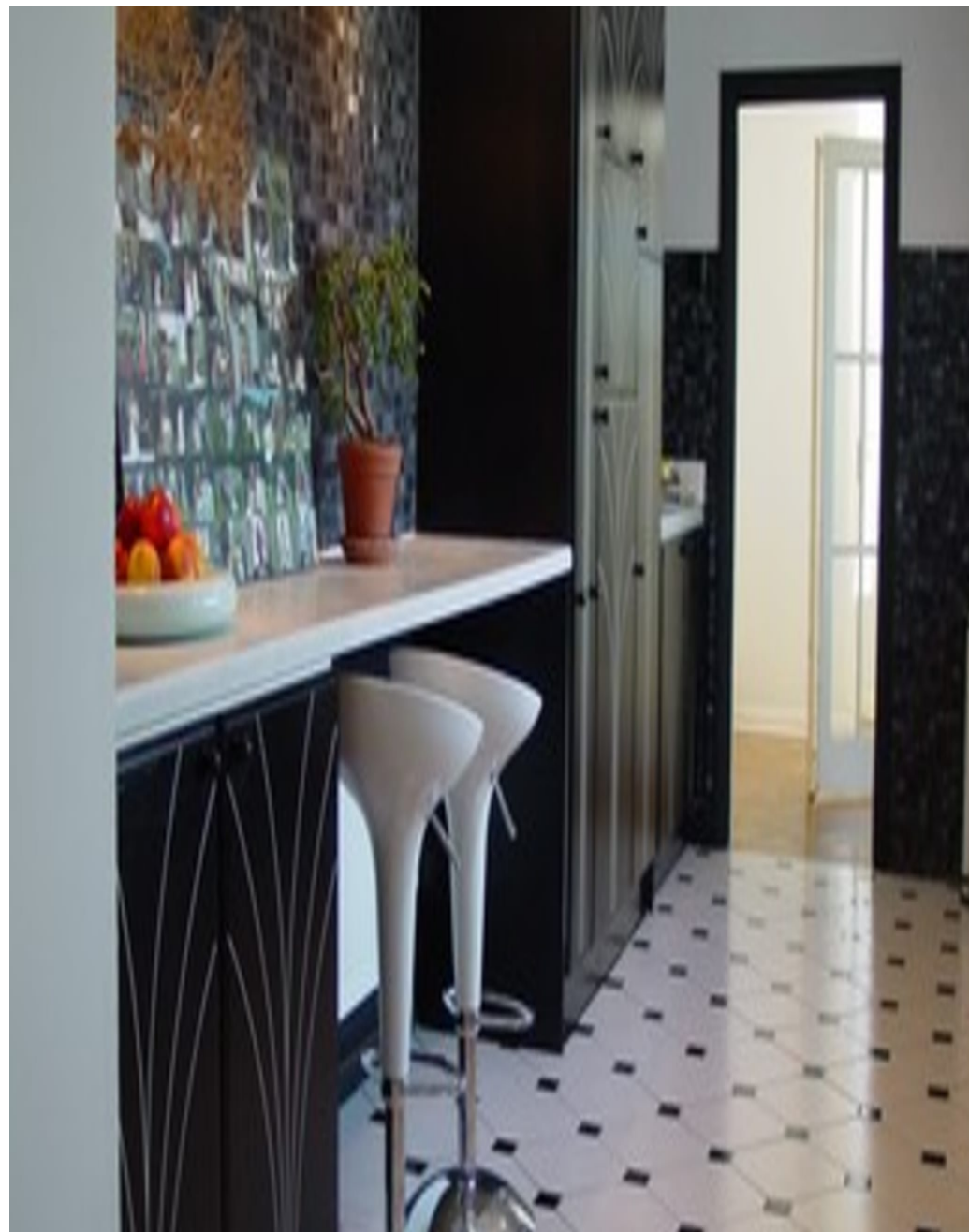
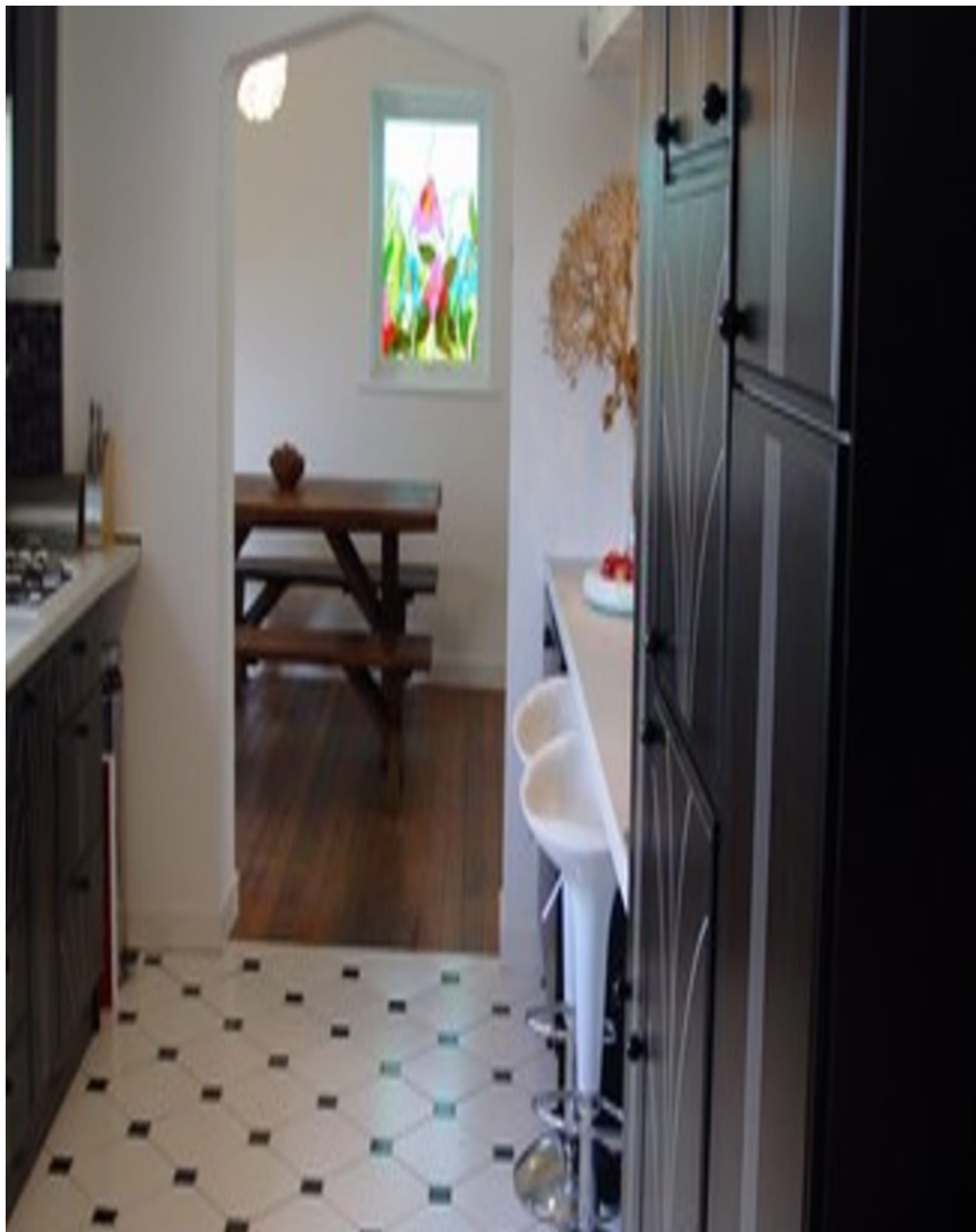
## Whitehouse Brighton

An original Art Deco detached beach house, built in 1930. On a shingle beach but with some sand at low tide, the house has direct beach access from the south facing garden and overlooks the English Channel with far reaching panoramic views. Brighton is the nearest city and is 5 miles to the east along the coast. It's an easy commute from central London by train to Shoreham by Sea station (approx 1 hour by fast train from Victoria). The station is a 5 minute taxi ride from the house. The large pool (10 x 5.5 metres) is open and maintained all year and is heated to 28 degrees (even when there is snow on the ground!). The planting in the garden

**CAROL HAYES**  
MANAGEMENT

020 7482 1555

[www.carolhayesmanagement.co.uk](http://www.carolhayesmanagement.co.uk)



## Whitehouse Brighton

An original Art Deco detached beach house, built in 1930. On a shingle beach but with some sand at low tide, the house has direct beach access from the south facing garden and overlooks the English Channel with far reaching panoramic views. Brighton is the nearest city and is 5 miles to the east along the coast. It's an easy commute from central London by train to Shoreham by Sea station (approx 1 hour by fast train from Victoria). The station is a 5 minute taxi ride from the house. The large pool (10 x 5.5 metres) is open and maintained all year and is heated to 28 degrees (even when there is snow on the ground!). The planting in the garden

**CAROL HAYES**  
MANAGEMENT

020 7482 1555

[www.carolhayesmanagement.co.uk](http://www.carolhayesmanagement.co.uk)



## Whitehouse Brighton

An original Art Deco detached beach house, built in 1930. On a shingle beach but with some sand at low tide, the house has direct beach access from the south facing garden and overlooks the English Channel with far reaching panoramic views. Brighton is the nearest city and is 5 miles to the east along the coast. It's an easy commute from central London by train to Shoreham by Sea station (approx 1 hour by fast train from Victoria). The station is a 5 minute taxi ride from the house. The large pool (10 x 5.5 metres) is open and maintained all year and is heated to 28 degrees (even when there is snow on the ground!). The planting in the garden

**CAROL HAYES**  
MANAGEMENT

020 7482 1555

[www.carolhayesmanagement.co.uk](http://www.carolhayesmanagement.co.uk)





## Whitehouse Brighton

An original Art Deco detached beach house, built in 1930. On a shingle beach but with some sand at low tide. The house has direct beach access from the south facing garden and overlooks the English Channel with far reaching panoramic views. Brighton is the nearest city and is 5 miles to the east along the coast. It's an easy commute from central London by train to Shoreham by Sea station (approx 1 hour by fast train from Victoria). The station is a 5 minute taxi ride from the house. The large pool (10 x 5.5 metres) is open and maintained all year and is heated to 28 degrees (even when there is snow on the ground!). The planting in the garden

**CAROL HAYES**  
**MANAGEMENT**

020 7482 1555

[www.carolhayesmanagement.co.uk](http://www.carolhayesmanagement.co.uk)



## Whitehouse Brighton

An original Art Deco detached beach house, built in 1930. On a shingle beach but with some sand at low tide, the house has direct beach access from the south facing garden and overlooks the English Channel with far reaching panoramic views. Brighton is the nearest city and is 5 miles to the east along the coast. It's an easy commute from central London by train to Shoreham by Sea station (approx 1 hour by fast train from Victoria). The station is a 5 minute taxi ride from the house. The large pool (10 x 5.5 metres) is open and maintained all year and is heated to 28 degrees (even when there is snow on the ground!). The planting in the garden

**CAROL HAYES**  
**MANAGEMENT**

020 7482 1555

[www.carolhayesmanagement.co.uk](http://www.carolhayesmanagement.co.uk)



## Whitehouse Brighton

An original Art Deco detached beach house, built in 1930. On a shingle beach but with some sand at low tide. The house has direct beach access from the south facing garden and overlooks the English Channel with far reaching panoramic views. Brighton is the nearest city and is 5 miles to the east along the coast. It's an easy commute from central London by train to Shoreham by Sea station (approx 1 hour by fast train from Victoria). The station is a 5 minute taxi ride from the house. The large pool (10 x 5.5 metres) is open and maintained all year and is heated to 28 degrees (even when there is snow on the ground!). The planting in the garden

**CAROL HAYES**  
**MANAGEMENT**

020 7482 1555

[www.carolhayesmanagement.co.uk](http://www.carolhayesmanagement.co.uk)





## Whitehouse Brighton

An original Art Deco detached beach house, built in 1930. On a shingle beach but with some sand at low tide, the house has direct beach access from the south facing garden and overlooks the English Channel with far reaching panoramic views. Brighton is the nearest city and is 5 miles to the east along the coast. It's an easy commute from central London by train to Shoreham by Sea station (approx 1 hour by fast train from Victoria). The station is a 5 minute taxi ride from the house. The large pool (10 x 5.5 metres) is open and maintained all year and is heated to 28 degrees (even when there is snow on the ground!). The planting in the garden

**CAROL HAYES**  
MANAGEMENT

020 7482 1555

[www.carolhayesmanagement.co.uk](http://www.carolhayesmanagement.co.uk)





## Whitehouse Brighton

An original Art Deco detached beach house, built in 1930. On a shingle beach but with some sand at low tide. The house has direct beach access from the south facing garden and overlooks the English Channel with far reaching panoramic views. Brighton is the nearest city and is 5 miles to the east along the coast. It's an easy commute from central London by train to Shoreham by Sea station (approx 1 hour by fast train from Victoria). The station is a 5 minute taxi ride from the house. The large pool (10 x 5.5 metres) is open and maintained all year and is heated to 28 degrees (even when there is snow on the ground!). The planting in the garden

**CAROL HAYES**  
**MANAGEMENT**

020 7482 1555

[www.carolhayesmanagement.co.uk](http://www.carolhayesmanagement.co.uk)



## Whitehouse Brighton

An original Art Deco detached beach house, built in 1930. On a shingle beach but with some sand at low tide. The house has direct beach access from the south facing garden and overlooks the English Channel with far reaching panoramic views. Brighton is the nearest city and is 5 miles to the east along the coast. It's an easy commute from central London by train to Shoreham by Sea station (approx 1 hour by fast train from Victoria). The station is a 5 minute taxi ride from the house. The large pool (10 x 5.5 metres) is open and maintained all year and is heated to 28 degrees (even when there is snow on the ground!). The planting in the garden

**CAROL HAYES**  
**MANAGEMENT**

020 7482 1555

[www.carolhayesmanagement.co.uk](http://www.carolhayesmanagement.co.uk)





## Whitehouse Brighton

An original Art Deco detached beach house, built in 1930. On a shingle beach but with some sand and a low tide the house has direct beach access from the south facing garden and overlooks the English Channel with far reaching panoramic views. Brighton is the nearest city and is 5 miles to the east along the coast. It's an easy commute from central London by train to Shoreham by Sea station (approx 1 hour by fast train from Victoria). The station is a 5 minute taxi ride from the house. The large pool (10 x 5.5 metres) is open and maintained all year and is heated to 28 degrees (even when there is snow on the ground!). The planting in the garden

**CAROL HAYES**  
**MANAGEMENT**

020 7482 1555

[www.carolhayesmanagement.co.uk](http://www.carolhayesmanagement.co.uk)





## Whitehouse Brighton

An original Art Deco detached beach house, built in 1930. On a shingle beach but with some sand at low tide, the house has direct beach access from the south facing garden and overlooks the English Channel with far reaching panoramic views. Brighton is the nearest city and is 5 miles to the east along the coast. It's an easy commute from central London by train to Shoreham by Sea station (approx 1 hour by fast train from Victoria). The station is a 5 minute taxi ride from the house. The large pool (10 x 5.5 metres) is open and maintained all year and is heated to 28 degrees (even when there is snow on the ground!). The planting in the garden

**CAROL HAYES**  
MANAGEMENT

020 7482 1555

[www.carolhayesmanagement.co.uk](http://www.carolhayesmanagement.co.uk)



## Whitehouse Brighton

An original Art Deco detached beach house, built in 1930. On a shingle beach but with some sand at low tide, the house has direct beach access from the south facing garden and overlooks the English Channel with far reaching panoramic views. Brighton is the nearest city and is 5 miles to the east along the coast. It's an easy commute from central London by train to Shoreham by Sea station (approx 1 hour by fast train from Victoria). The station is a 5 minute taxi ride from the house. The large pool (10 x 5.5 metres) is open and maintained all year and is heated to 28 degrees (even when there is snow on the ground!). The planting in the garden

**CAROL HAYES**  
**MANAGEMENT**

020 7482 1555

[www.carolhayesmanagement.co.uk](http://www.carolhayesmanagement.co.uk)