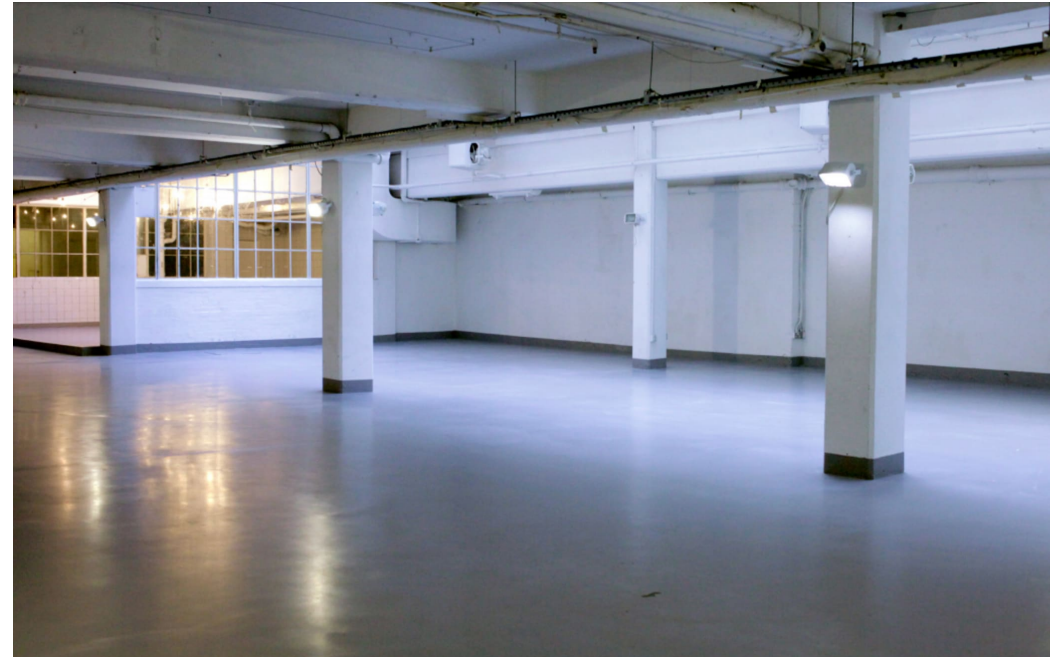


# Record Factory W1

The Record Factory Soho is a unique venue located in the heart of central London. It has two rooms covering approximately 6,000 sq ft. and is suitable for exhibitions, presentations, trade and fashion shows, press days, launch parties and so much more. The main gallery (the big white space) is approximately 450 sqm and holds up to 260 people, and the rear studio (the brick-walled room) is 120sqm and holds up to 110 (if hired on it's own or 60 if hired in conjunction with the main gallery). Total venue capacity is 320. There are also two entrances. Ideal for press days, product launches and special events.





## Record Factory W1

The Record Factory Soho is a unique venue located in the heart of central London. It has two rooms covering approximately 6,000 sq ft. and is suitable for exhibitions, presentations, trade and fashion shows, press days, launch parties and so much more. The main gallery (the big white space) is approximately 450 sqm and holds up to 260 people, and the rear studio (the brick-walled room) is 120sqm and holds up to 110 (if hired on it's own or 60 if hired in conjunction with the main gallery). Total venue capacity is 320. There are also two entrances. Ideal for press days, product launches and special events.

**CAROL HAYES**  
MANAGEMENT  
CREATIVE & EVENT MANAGEMENT

020 7482 1555

[www.carolhayesmanagement.co.uk](http://www.carolhayesmanagement.co.uk)



## Record Factory W1

The Record Factory Soho is a unique venue located in the heart of central London. It has two rooms covering approximately 6,000 sq ft. and is suitable for exhibitions, presentations, trade and fashion shows, press days, launch parties and so much more. The main gallery (the big white space) is approximately 450 sqm and holds up to 260 people, and the rear studio (the brick-walled room) is 120sqm and holds up to 110 (if hired on it's own or 60 if hired in conjunction with the main gallery). Total venue capacity is 320. There are also two entrances. Ideal for press days, product launches and special events.

**CAROL HAYES**  
**MANAGEMENT**  
CREATIVE & EVENT MANAGEMENT

020 7482 1555

[www.carolhayesmanagement.co.uk](http://www.carolhayesmanagement.co.uk)



## Record Factory W1

The Record Factory Soho is a unique venue located in the heart of central London. It has two rooms covering approximately 6,000 sq ft. and is suitable for exhibitions, presentations, trade and fashion shows, press days, launch parties and so much more. The main gallery (the big white space) is approximately 450 sqm and holds up to 260 people, and the rear studio (the brick-walled room) is 120sqm and holds up to 110 (if hired on it's own or 60 if hired in conjunction with the main gallery). Total venue capacity is 320. There are also two entrances. Ideal for press days, product launches and special events.

**CAROL HAYES**  
**MANAGEMENT**  
CREATIVE ARTS & EVENT MANAGEMENT

020 7482 1555

[www.carolhayesmanagement.co.uk](http://www.carolhayesmanagement.co.uk)





## Record Factory W1

The Record Factory Soho is a unique venue located in the heart of central London. It has two rooms covering approximately 6,000 sq ft. and is suitable for exhibitions, presentations, trade and fashion shows, press days, launch parties and so much more. The main gallery (the big white space) is approximately 450 sqm and holds up to 260 people, and the rear studio (the brick-walled room) is 120sqm and holds up to 110 (if hired on it's own or 60 if hired in conjunction with the main gallery). Total venue capacity is 320. There are also two entrances. Ideal for press days, product launches and special events.

**CAROL HAYES**  
**MANAGEMENT**  
CREATIVE & PROJECT MANAGEMENT

020 7482 1555

[www.carolhayesmanagement.co.uk](http://www.carolhayesmanagement.co.uk)



## Record Factory W1

The Record Factory Soho is a unique venue located in the heart of central London. It has two rooms covering approximately 6,000 sq ft. and is suitable for exhibitions, presentations, trade and fashion shows, press days, launch parties and so much more. The main gallery (the big white space) is approximately 450 sqm and holds up to 260 people, and the rear studio (the brick-walled room) is 120sqm and holds up to 110 (if hired on it's own or 60 if hired in conjunction with the main gallery). Total venue capacity is 320. There are also two entrances. Ideal for press days, product launches and special events.

**CAROLHAYES**  
**MANAGEMENT**  
CREATIVE & EVENT MANAGEMENT

020 7482 1555

[www.carolhayesmanagement.co.uk](http://www.carolhayesmanagement.co.uk)



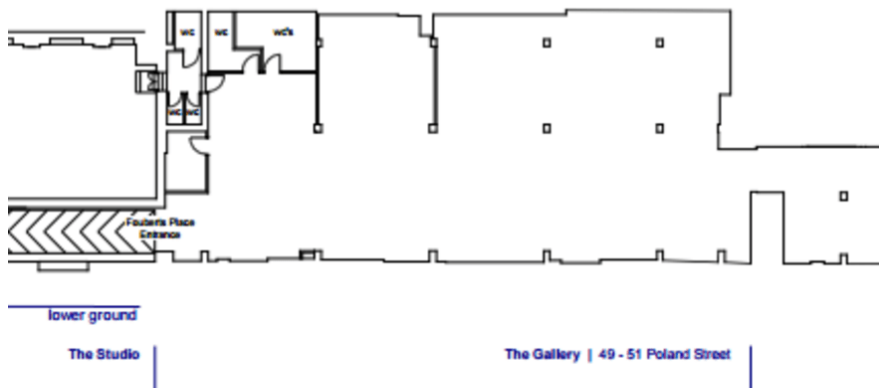
## Record Factory W1

The Record Factory Soho is a unique venue located in the heart of central London. It has two rooms covering approximately 6,000 sq ft. and is suitable for exhibitions, presentations, trade and fashion shows, press days, launch parties and so much more. The main gallery (the big white space) is approximately 450 sqm and holds up to 260 people, and the rear studio (the brick-walled room) is 120sqm and holds up to 110 (if hired on it's own or 60 if hired in conjunction with the main gallery). Total venue capacity is 320. There are also two entrances. Ideal for press days, product launches and special events.

**CAROL HAYES**  
**MANAGEMENT**  
CREATIVE & EVENT MANAGEMENT

020 7482 1555

[www.carolhayesmanagement.co.uk](http://www.carolhayesmanagement.co.uk)



## Record Factory W1

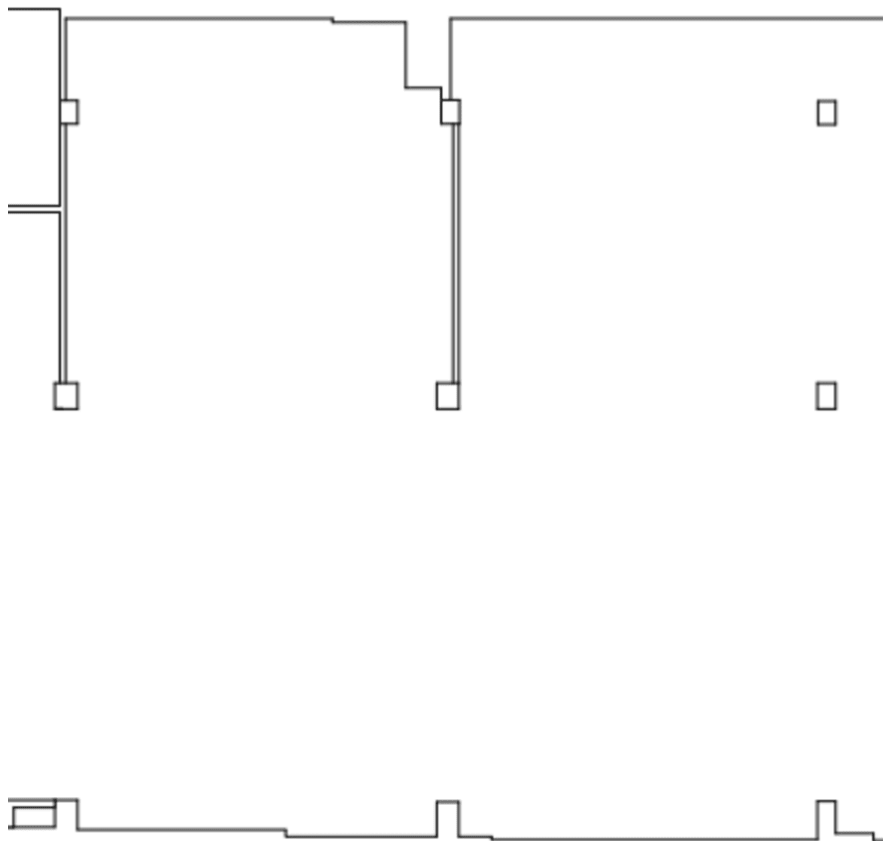
The Record Factory Soho is a unique venue located in the heart of central London. It has two rooms covering approximately 6,000 sq ft. and is suitable for exhibitions, presentations, trade and fashion shows, press days, launch parties and so much more. The main gallery (the big white space) is approximately 450 sqm and holds up to 260 people, and the rear studio (the brick-walled room) is 120sqm and holds up to 110 (if hired on it's own or 60 if hired in conjunction with the main gallery). Total venue capacity is 320. There are also two entrances. Ideal for press days, product launches and special events.

**CAROL HAYES**  
MANAGEMENT  
CREATIVE & PROJECT MANAGEMENT

020 7482 1555

[www.carolhayesmanagement.co.uk](http://www.carolhayesmanagement.co.uk)





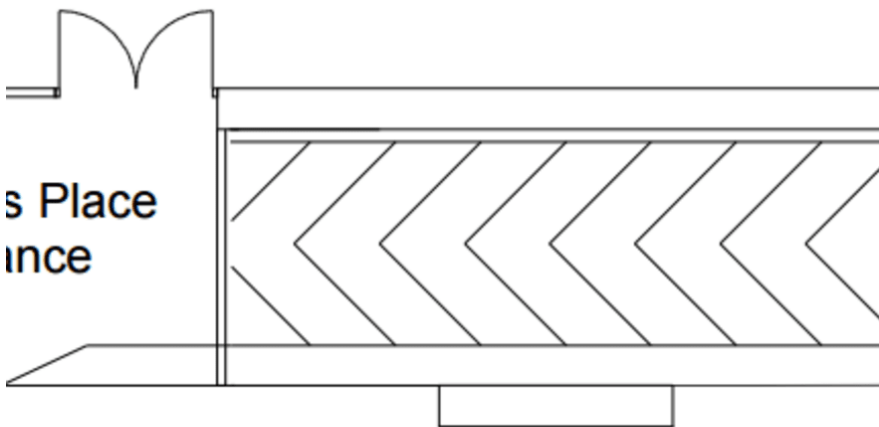
## Record Factory W1

The Record Factory Soho is a unique venue located in the heart of central London. It has two rooms covering approximately 6000 sq ft. and is suitable for exhibitions, presentations, trade and fashion shows, press days, launch parties and so much more. The main gallery (the big white space) is approximately 450 sqm and holds up to 260 people, and the rear studio (the brick-walled room) is 120sqm and holds up to 110 (if hired on it's own or 60 if hired in conjunction with the main gallery). Total venue capacity is 320. There are also two entrances. Ideal for press days, product launches and special events.

**CAROL HAYES**  
MANAGEMENT  
CREATIVE & PROJECT MANAGEMENT

020 7482 1555

[www.carolhayesmanagement.co.uk](http://www.carolhayesmanagement.co.uk)



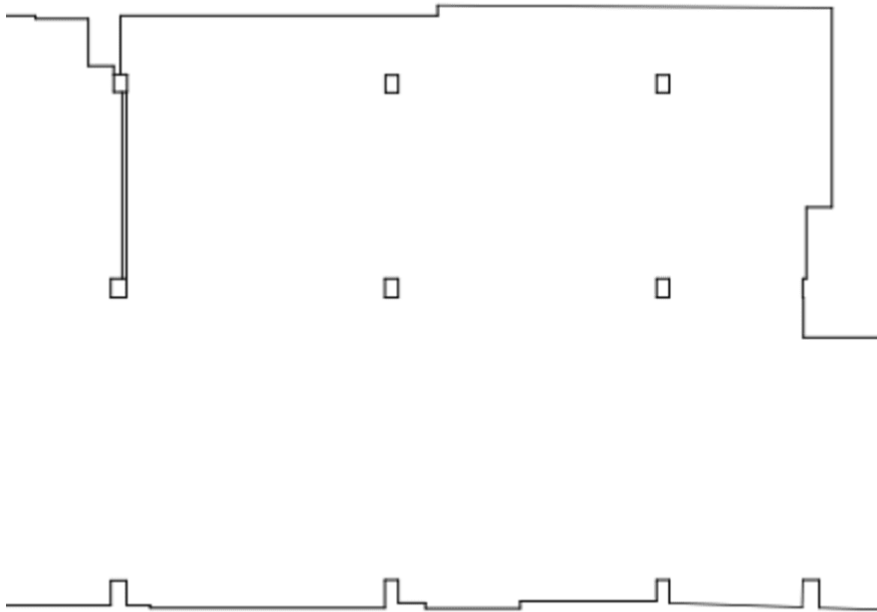
## Record Factory W1

The Record Factory Soho is a unique venue located in the heart of central London. It has two rooms covering approximately 6000 sq ft. and is suitable for exhibitions, presentations, trade and fashion shows, press days, launch parties and so much more. The main gallery (the big white space) is approximately 450 sqm and holds up to 260 people, and the rear studio (the brick-walled room) is 120sqm and holds up to 110 (if hired on it's own or 60 if hired in conjunction with the main gallery). Total venue capacity is 320. There are also two entrances. Ideal for press days, product launches and special events.

**CAROL HAYES**  
MANAGEMENT  
CREATIVE AND EVENT MANAGEMENT

020 7482 1555

[www.carolhayesmanagement.co.uk](http://www.carolhayesmanagement.co.uk)



## Record Factory W1

The Record Factory Soho is a unique venue located in the heart of central London. It has two rooms covering approximately 6000 sq ft. and is suitable for exhibitions, presentations, trade and fashion shows, press days, launch parties and so much more. The main gallery (the big white space) is approximately 450 sqm and holds up to 260 people, and the rear studio (the brick-walled room) is 120sqm and holds up to 110 (if hired on it's own or 60 if hired in conjunction with the main gallery). Total venue capacity is 320. There are also two entrances. Ideal for press days, product launches and special events.

**CAROL HAYES**  
MANAGEMENT  
CREATIVE AND FINANCIAL

020 7482 1555

[www.carolhayesmanagement.co.uk](http://www.carolhayesmanagement.co.uk)