

## House Next Door N16

The House Next Door is a wonderful five floored former building merchants situated on the corner of London's Jewish Quarter. Wonderful textures and wallpapers adorn the walls which are complimented by a mixture of parquet and original oak floorboards. The House is served by large sash windows which provide great natural daylight and a number of differently themed rooms with varying colour schemes. There is also a beautiful back yard which is perfect in summer to sit outside and have lunch and we have one private parking space available. The House is situated directly next to The Depository, which is also available through CHM.





## House Next Door N16

The House Next Door is a wonderful five floored former building merchants situated on the corner of London's Jewish Quarter. Wonderful textures and wallpapers adorn the walls which are complimented by a mixture of parquet and original oak floorboards. The House is served by large sash windows which provide great natural daylight and a number of differently themed rooms with varying colour schemes. There is also a beautiful back yard which is perfect in summer to sit outside and have lunch and we have one private parking space available. The House is situated directly next to The Depository, which is also available through CHM.

**CAROL HAYES**  
MANAGEMENT

020 7482 1555

[www.carolhayesmanagement.co.uk](http://www.carolhayesmanagement.co.uk)



## House Next Door N16

The House Next Door is a wonderful five floored former building merchants situated on the corner of London's Jewish Quarter. Wonderful textures and wallpapers adorn the walls which are complimented by a mixture of parquet and original oak floorboards. The House is served by large sash windows which provide great natural daylight and a number of differently themed rooms with varying colour schemes. There is also a beautiful back yard which is perfect in summer to sit outside and have lunch and we have one private parking space available. The House is situated directly next to The Depository, which is also available through CHM.

**CAROL HAYES**  
MANAGEMENT

020 7482 1555

[www.carolhayesmanagement.co.uk](http://www.carolhayesmanagement.co.uk)





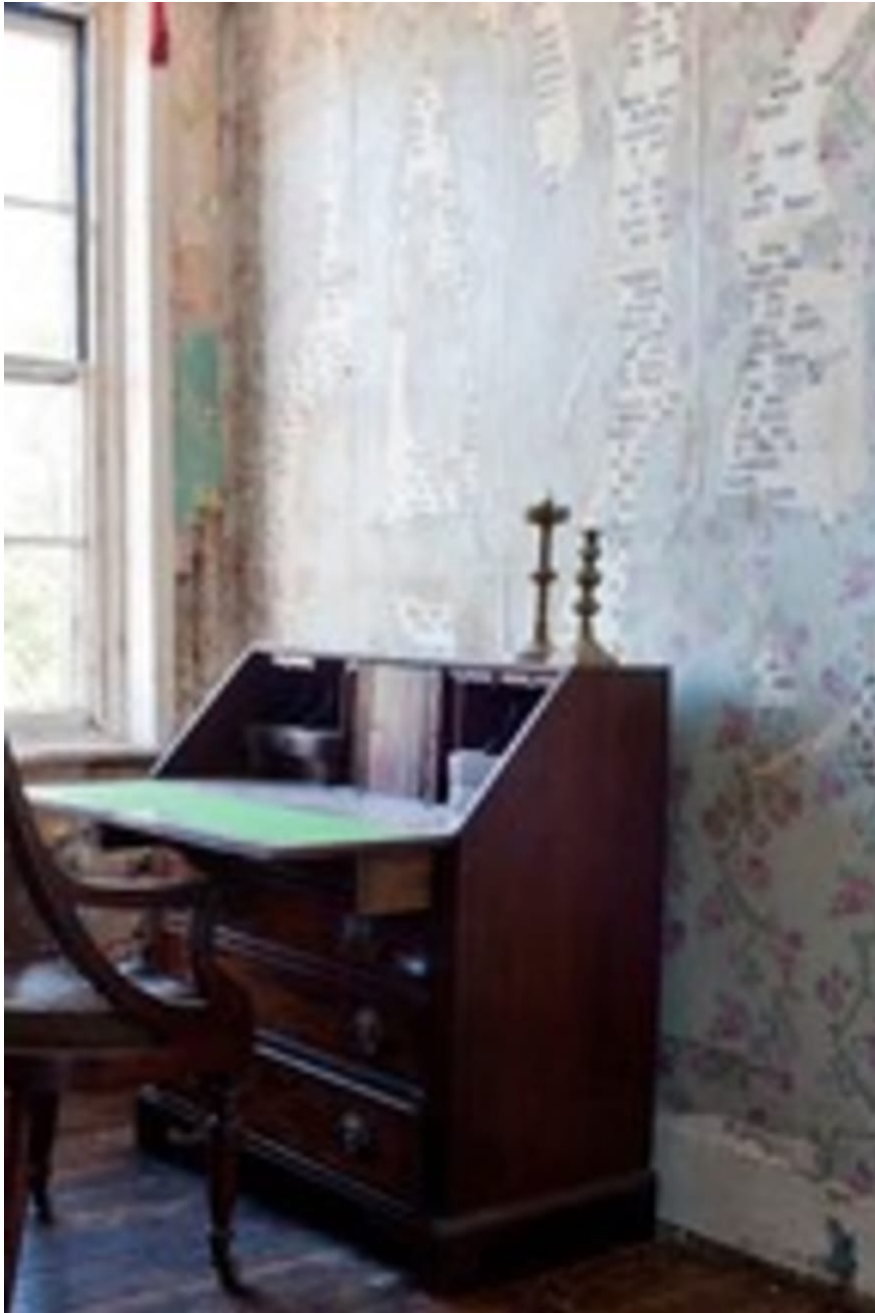
## House Next Door N16

The House Next Door is a wonderful five floored former building merchants situated on the corner of London's Jewish Quarter. Wonderful textures and wallpapers adorn the walls which are complimented by a mixture of parquet and original oak floorboards. The House is served by large sash windows which provide great natural daylight and a number of differently themed rooms with varying colour schemes. There is also a beautiful back yard which is perfect in summer to sit outside and have lunch and we have one private parking space available. The House is situated directly next to The Depository, which is also available through CHM.

**CAROL HAYES**  
MANAGEMENT

020 7482 1555

[www.carolhayesmanagement.co.uk](http://www.carolhayesmanagement.co.uk)



## House Next Door N16

The House Next Door is a wonderful five floored former building merchants situated on the corner of London's Jewish Quarter. Wonderful textures and wallpapers adorn the walls which are complimented by a mixture of parquet and original oak floorboards. The House is served by large sash windows which provide great natural daylight and a number of differently themed rooms with varying colour schemes. There is also a beautiful back yard which is perfect in summer to sit outside and have lunch and we have one private parking space available. The House is situated directly next to The Depository, which is also available through CHM.

**CAROL HAYES**  
MANAGEMENT

020 7482 1555

[www.carolhayesmanagement.co.uk](http://www.carolhayesmanagement.co.uk)



## House Next Door N16

The House Next Door is a wonderful five floored former building merchants situated on the corner of London's Jewish Quarter. Wonderful textures and wallpapers adorn the walls which are complimented by a mixture of parquet and original oak floorboards. The House is served by large sash windows which provide great natural daylight and a number of differently themed rooms with varying colour schemes. There is also a beautiful back yard which is perfect in summer to sit outside and have lunch and we have one private parking space available. The House is situated directly next to The Depository, which is also available through CHM.

**CAROL HAYES**  
**MANAGEMENT**

020 7482 1555

[www.carolhayesmanagement.co.uk](http://www.carolhayesmanagement.co.uk)



## House Next Door N16

The House Next Door is a wonderful five floored former building merchants situated on the corner of London's Jewish Quarter. Wonderful textures and wallpapers adorn the walls which are complimented by a mixture of parquet and original oak floorboards. The House is served by large sash windows which provide great natural daylight and a number of differently themed rooms with varying colour schemes. There is also a beautiful back yard which is perfect in summer to sit outside and have lunch and we have one private parking space available. The House is situated directly next to The Depository, which is also available through CHM.

**CAROL HAYES**  
**MANAGEMENT**

020 7482 1555

[www.carolhayesmanagement.co.uk](http://www.carolhayesmanagement.co.uk)





## House Next Door N16

The House Next Door is a wonderful five floored former building merchants situated on the corner of London's Jewish Quarter. Wonderful textures and wallpapers adorn the walls which are complimented by a mixture of parquet and original oak floorboards. The House is served by large sash windows which provide great natural daylight and a number of differently themed rooms with varying colour schemes. There is also a beautiful back yard which is perfect in summer to sit outside and have lunch and we have one private parking space available. The House is situated directly next to The Depository, which is also available through CHM.

**CAROL HAYES**  
MANAGEMENT

020 7482 1555

[www.carolhayesmanagement.co.uk](http://www.carolhayesmanagement.co.uk)





## House Next Door N16

The House Next Door is a wonderful five floored former building merchants situated on the corner of London's Jewish Quarter. Wonderful textures and wallpapers adorn the walls which are complimented by a mixture of parquet and original oak floorboards. The House is served by large sash windows which provide great natural daylight and a number of differently themed rooms with varying colour schemes. There is also a beautiful back yard which is perfect in summer to sit outside and have lunch and we have one private parking space available. The House is situated directly next to The Depository, which is also available through CHM.

**CAROL HAYES**  
**MANAGEMENT**

020 7482 1555

[www.carolhayesmanagement.co.uk](http://www.carolhayesmanagement.co.uk)



## House Next Door N16

The House Next Door is a wonderful five floored former building merchants situated on the corner of London's Jewish Quarter. Wonderful textures and wallpapers adorn the walls which are complimented by a mixture of parquet and original oak floorboards. The House is served by large sash windows which provide great natural daylight and a number of differently themed rooms with varying colour schemes. There is also a beautiful back yard which is perfect in summer to sit outside and have lunch and we have one private parking space available. The House is situated directly next to The Depository, which is also available through CHM.

**CAROL HAYES**  
**MANAGEMENT**

020 7482 1555

[www.carolhayesmanagement.co.uk](http://www.carolhayesmanagement.co.uk)



## House Next Door N16

The House Next Door is a wonderful five floored former building merchants situated on the corner of London's Jewish Quarter. Wonderful textures and wallpapers adorn the walls which are complimented by a mixture of parquet and original oak floorboards. The House is served by large sash windows which provide great natural daylight and a number of differently themed rooms with varying colour schemes. There is also a beautiful back yard which is perfect in summer to sit outside and have lunch and we have one private parking space available. The House is situated directly next to The Depository, which is also available through CHM.

**CAROL HAYES**  
MANAGEMENT

020 7482 1555

[www.carolhayesmanagement.co.uk](http://www.carolhayesmanagement.co.uk)



## House Next Door N16

The House Next Door is a wonderful five floored former building merchants situated on the corner of London's Jewish Quarter. Wonderful textures and wallpapers adorn the walls which are complimented by a mixture of parquet and original oak floorboards. The House is served by large sash windows which provide great natural daylight and a number of differently themed rooms with varying colour schemes. There is also a beautiful back yard which is perfect in summer to sit outside and have lunch and we have one private parking space available. The House is situated directly next to The Depository, which is also available through CHM.

**CAROL HAYES**  
MANAGEMENT

020 7482 1555

[www.carolhayesmanagement.co.uk](http://www.carolhayesmanagement.co.uk)





## House Next Door N16

The House Next Door is a wonderful five floored former building merchants situated on the corner of London's Jewish Quarter. Wonderful textures and wallpapers adorn the walls which are complimented by a mixture of parquet and original oak floorboards. The House is served by large sash windows which provide great natural daylight and a number of differently themed rooms with varying colour schemes. There is also a beautiful back yard which is perfect in summer to sit outside and have lunch and we have one private parking space available. The House is situated directly next to The Depository, which is also available through CHM.

**CAROL HAYES**  
MANAGEMENT

020 7482 1555

[www.carolhayesmanagement.co.uk](http://www.carolhayesmanagement.co.uk)



## House Next Door N16

The House Next Door is a wonderful five floored former building merchants situated on the corner of London's Jewish Quarter. Wonderful textures and wallpapers adorn the walls which are complimented by a mixture of parquet and original oak floorboards. The House is served by large sash windows which provide great natural daylight and a number of differently themed rooms with varying colour schemes. There is also a beautiful back yard which is perfect in summer to sit outside and have lunch and we have one private parking space available. The House is situated directly next to The Depository, which is also available through CHM.

**CAROL HAYES**  
MANAGEMENT

020 7482 1555

[www.carolhayesmanagement.co.uk](http://www.carolhayesmanagement.co.uk)





## House Next Door N16

The House Next Door is a wonderful five floored former building merchants situated on the corner of London's Jewish Quarter. Wonderful textures and wallpapers adorn the walls which are complimented by a mixture of parquet and original oak floorboards. The House is served by large sash windows which provide great natural daylight and a number of differently themed rooms with varying colour schemes. There is also a beautiful back yard which is perfect in summer to sit outside and have lunch and we have one private parking space available. The House is situated directly next to The Depository, which is also available through CHM.

**CAROL HAYES**  
**MANAGEMENT**

020 7482 1555

[www.carolhayesmanagement.co.uk](http://www.carolhayesmanagement.co.uk)



## House Next Door N16

The House Next Door is a wonderful five floored former building merchants situated on the corner of London's Jewish Quarter. Wonderful textures and wallpapers adorn the walls which are complimented by a mixture of parquet and original oak floorboards. The House is served by large sash windows which provide great natural daylight and a number of differently themed rooms with varying colour schemes. There is also a beautiful back yard which is perfect in summer to sit outside and have lunch and we have one private parking space available. The House is situated directly next to The Depository, which is also available through CHM.

**CAROL HAYES**  
MANAGEMENT

020 7482 1555

[www.carolhayesmanagement.co.uk](http://www.carolhayesmanagement.co.uk)





## House Next Door N16

The House Next Door is a wonderful five floored former building merchants situated on the corner of London's Jewish Quarter. Wonderful textures and wallpapers adorn the walls which are complimented by a mixture of parquet and original oak floorboards. The House is served by large sash windows which provide great natural daylight and a number of differently themed rooms with varying colour schemes. There is also a beautiful back yard which is perfect in summer to sit outside and have lunch and we have one private parking space available. The House is situated directly next to The Depository, which is also available through CHM.

**CAROL HAYES**  
**MANAGEMENT**

020 7482 1555

[www.carolhayesmanagement.co.uk](http://www.carolhayesmanagement.co.uk)



## House Next Door N16

The House Next Door is a wonderful five floored former building merchants situated on the corner of London's Jewish Quarter. Wonderful textures and wallpapers adorn the walls which are complimented by a mixture of parquet and original oak floorboards. The House is served by large sash windows which provide great natural daylight and a number of differently themed rooms with varying colour schemes. There is also a beautiful back yard which is perfect in summer to sit outside and have lunch and we have one private parking space available. The House is situated directly next to The Depository, which is also available through CHM.

**CAROL HAYES**  
**MANAGEMENT**

020 7482 1555

[www.carolhayesmanagement.co.uk](http://www.carolhayesmanagement.co.uk)



## House Next Door N16

The House Next Door is a wonderful five floored former building merchants situated on the corner of London's Jewish Quarter. Wonderful textures and wallpapers adorn the walls which are complimented by a mixture of parquet and original oak floorboards. The House is served by large sash windows which provide great natural daylight and a number of differently themed rooms with varying colour schemes. There is also a beautiful back yard which is perfect in summer to sit outside and have lunch and we have one private parking space available. The House is situated directly next to The Depository, which is also available through CHM.

**CAROL HAYES**  
MANAGEMENT

020 7482 1555

[www.carolhayesmanagement.co.uk](http://www.carolhayesmanagement.co.uk)