

Factory Studio

The Factory, a Boutique Photographic Studio housed in a Victorian Warehouse, is available for film and photographic projects. With over 1500 sq feet of useable space, The Factory offers a versatile and inspiring environment, providing a stunning backdrop to any Fashion, Food, Portfolio Advertising and Product Placement project. Located in London E14 , close to Canary Wharf and Stratford, The Factory has off street parking and is within a short walk of Langdon Park DLR station.





Factory Studio

The Factory, a Boutique Photographic Studio housed in a Victorian Warehouse, is available for film and photography projects. With over 1500 sq feet of useable space, The Factory offers a versatile and inspiring environment, providing a stunning backdrop to any Fashion, Food, Portfolio Advertising and Product Placement project. Located in London E14, close to Canary Wharf and Stratford, The Factory has off street parking and is within a short walk of Langdon Park DLR station.

CAROL HAYES
MANAGEMENT
CREATIVE & EVENT MANAGEMENT

020 7482 1555

www.carolhayesmanagement.co.uk



Factory Studio

The Factory, a Boutique Photographic Studio housed in a Victorian Warehouse, is available for film and photography projects. With over 1500 sq feet of useable space, The Factory offers a versatile and inspiring environment, providing a stunning backdrop to any Fashion, Food, Portfolio Advertising and Product Placement project. Located in London E14, close to Canary Wharf and Stratford, The Factory has off street parking and is within a short walk of Langdon Park DLR station.

CAROL HAYES
MANAGEMENT

020 7482 1555

www.carolhayesmanagement.co.uk



Factory Studio

The Factory, a Boutique Photographic Studio housed in a Victorian Warehouse, is available for film and photography projects. With over 1500 sq feet of useable space, The Factory offers a versatile and inspiring environment, providing a stunning backdrop to any Fashion, Food, Portfolio Advertising and Product Placement project. Located in London E14, close to Canary Wharf and Stratford, The Factory has off street parking and is within a short walk of Langdon Park DLR station.

CAROL HAYES
MANAGEMENT

020 7482 1555

www.carolhayesmanagement.co.uk



Factory Studio

The Factory, a Boutique Photographic Studio housed in a Victorian Warehouse, is available for film and photography projects. With over 1500 sq feet of useable space, The Factory offers a versatile and inspiring environment, providing a stunning backdrop to any Fashion, Food, Portfolio Advertising and Product Placement project. Located in London E14, close to Canary Wharf and Stratford, The Factory has off street parking and is within a short walk of Langdon Park DLR station.

CAROL HAYES
MANAGEMENT

020 7482 1555

www.carolhayesmanagement.co.uk



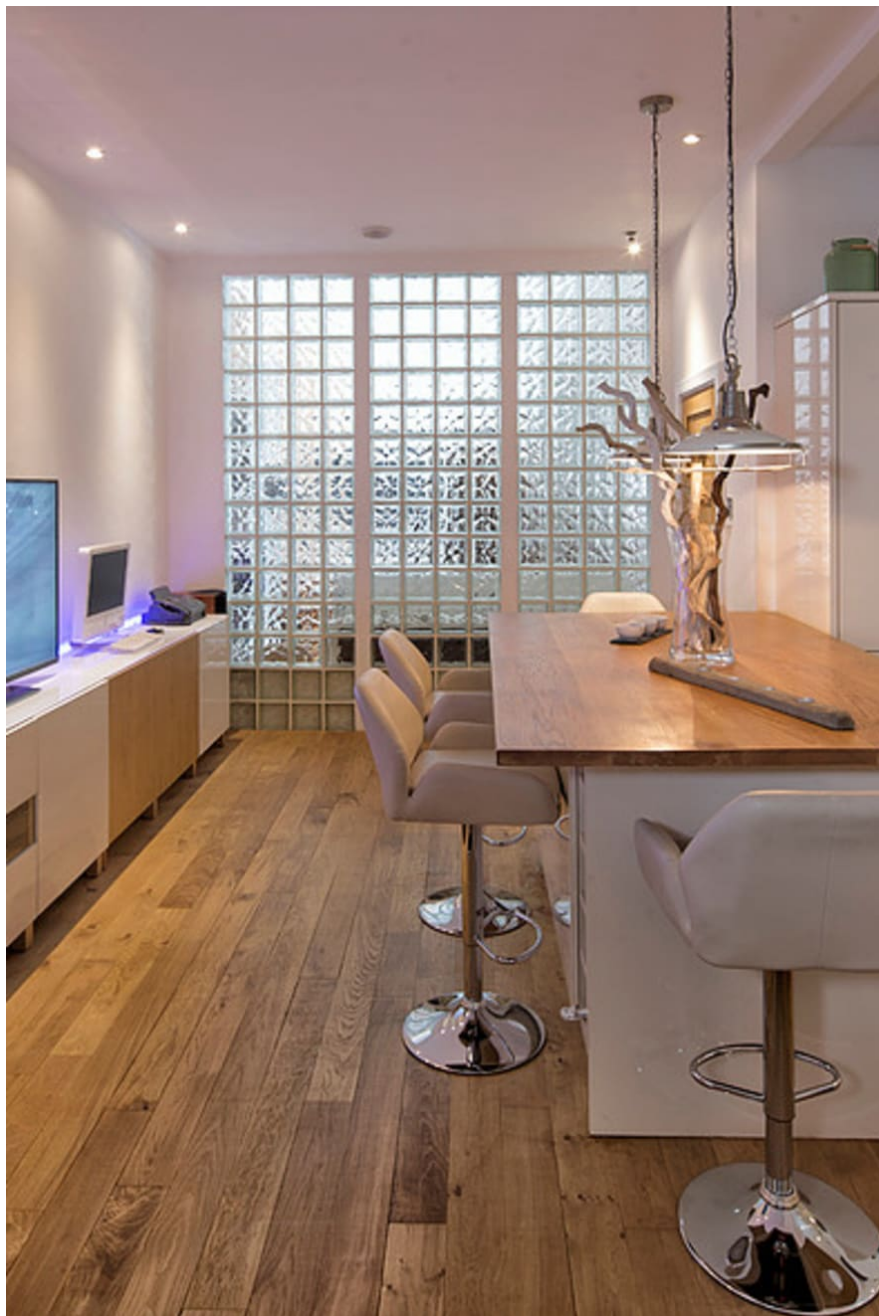
Factory Studio

The Factory, a Boutique Photographic Studio housed in a Victorian Warehouse, is available for film and photography projects. With over 1500 sq feet of useable space, The Factory offers a versatile and inspiring environment, providing a stunning backdrop to any Fashion, Food, Portfolio Advertising and Product Placement project. Located in London E14, close to Canary Wharf and Stratford, The Factory has off street parking and is within a short walk of Langdon Park DLR station.

CAROL HAYES
MANAGEMENT

020 7482 1555

www.carolhayesmanagement.co.uk



Factory Studio

The Factory, a Boutique Photographic Studio housed in a Victorian Warehouse, is available for film and photography projects. With over 1500 sq feet of useable space, The Factory offers a versatile and inspiring environment, providing a stunning backdrop to any Fashion, Food, Portfolio Advertising and Product Placement project. Located in London E14, close to Canary Wharf and Stratford, The Factory has off street parking and is within a short walk of Langdon Park DLR station.

CAROL HAYES
MANAGEMENT

020 7482 1555

www.carolhayesmanagement.co.uk



Factory Studio

The Factory, a Boutique Photographic Studio housed in a Victorian Warehouse, is available for film and photography projects. With over 1500 sq feet of useable space, The Factory offers a versatile and inspiring environment, providing a stunning backdrop to any Fashion, Food, Portfolio Advertising and Product Placement project. Located in London E14, close to Canary Wharf and Stratford, The Factory has off street parking and is within a short walk of Langdon Park DLR station.

CAROL HAYES
MANAGEMENT

020 7482 1555

www.carolhayesmanagement.co.uk



Factory Studio

The Factory, a Boutique Photographic Studio housed in a Victorian Warehouse, is available for film and photography projects. With over 1500 sq feet of useable space, The Factory offers a versatile and inspiring environment, providing a stunning backdrop to any Fashion, Food, Portfolio Advertising and Product Placement project. Located in London E14, close to Canary Wharf and Stratford, The Factory has off street parking and is within a short walk of Langdon Park DLR station.

CAROL HAYES
MANAGEMENT

020 7482 1555

www.carolhayesmanagement.co.uk



Factory Studio

The Factory, a Boutique Photographic Studio housed in a Victorian Warehouse, is available for film and photography projects. With over 1500 sq feet of useable space, The Factory offers a versatile and inspiring environment, providing a stunning backdrop to any Fashion, Food, Portfolio Advertising and Product Placement project. Located in London E14, close to Canary Wharf and Stratford, The Factory has off street parking and is within a short walk of Langdon Park DLR station.

CAROL HAYES
MANAGEMENT
CREATIVE & EVENT MANAGEMENT

020 7482 1555

www.carolhayesmanagement.co.uk



Factory Studio

The Factory, a Boutique Photographic Studio housed in a Victorian Warehouse, is available for film and photography projects. With over 1500 sq feet of useable space, The Factory offers a versatile and inspiring environment, providing a stunning backdrop to any Fashion, Food, Portfolio Advertising and Product Placement project. Located in London E14, close to Canary Wharf and Stratford, The Factory has off street parking and is within a short walk of Langdon Park DLR station.

CAROL HAYES
MANAGEMENT

020 7482 1555

www.carolhayesmanagement.co.uk



Factory Studio

The Factory, a Boutique Photographic Studio housed in a Victorian Warehouse, is available for film and photography projects. With over 1500 sq feet of useable space, The Factory offers a versatile and inspiring environment, providing a stunning backdrop to any Fashion, Food, Portfolio Advertising and Product Placement project. Located in London E14, close to Canary Wharf and Stratford, The Factory has off street parking and is within a short walk of Langdon Park DLR station.

CAROL HAYES
MANAGEMENT
CREATIVE & EVENT MANAGEMENT

020 7482 1555

www.carolhayesmanagement.co.uk



Factory Studio

The Factory, a Boutique Photographic Studio housed in a Victorian Warehouse, is available for film and photography projects. With over 1500 sq feet of useable space, The Factory offers a versatile and inspiring environment, providing a stunning backdrop to any Fashion, Food, Portfolio Advertising and Product Placement project. Located in London E14, close to Canary Wharf and Stratford, The Factory has off street parking and is within a short walk of Langdon Park DLR station.

CAROL HAYES
MANAGEMENT

020 7482 1555

www.carolhayesmanagement.co.uk



Factory Studio

The Factory, a Boutique Photographic Studio housed in a Victorian Warehouse, is available for film and photography projects. With over 1500 sq feet of useable space, The Factory offers a versatile and inspiring environment, providing a stunning backdrop to any Fashion, Food, Portfolio Advertising and Product Placement project. Located in London E14, close to Canary Wharf and Stratford, The Factory has off street parking and is within a short walk of Langdon Park DLR station.

CAROL HAYES
MANAGEMENT

020 7482 1555

www.carolhayesmanagement.co.uk



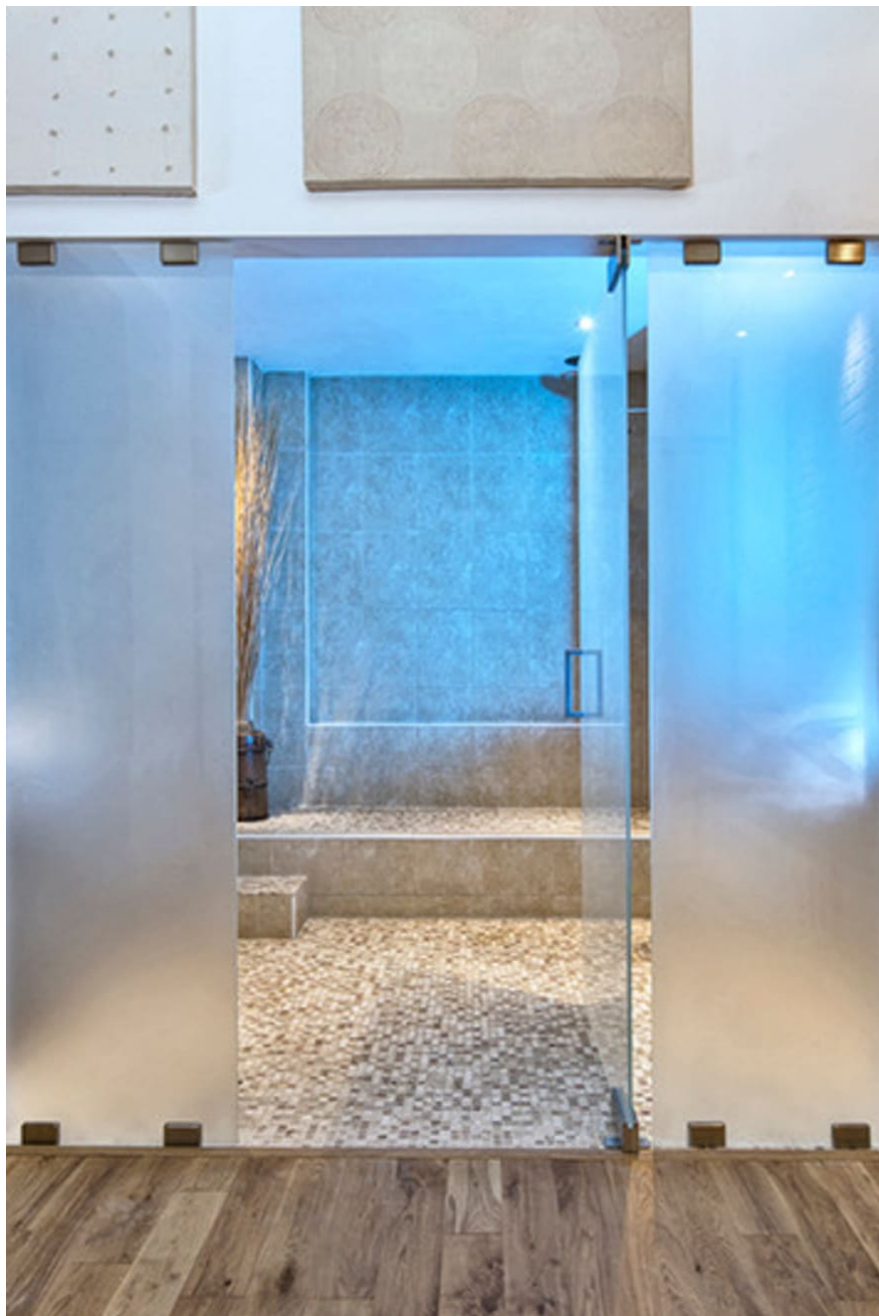
Factory Studio

The Factory, a Boutique Photographic Studio housed in a Victorian Warehouse, is available for film and photography projects. With over 1500 sq feet of useable space, The Factory offers a versatile and inspiring environment, providing a stunning backdrop to any Fashion, Food, Portfolio Advertising and Product Placement project. Located in London E14, close to Canary Wharf and Stratford, The Factory has off street parking and is within a short walk of Langdon Park DLR station.

CAROL HAYES
MANAGEMENT
CREATIVE & EVENT MANAGEMENT

020 7482 1555

www.carolhayesmanagement.co.uk



Factory Studio

The Factory, a Boutique Photographic Studio housed in a Victorian Warehouse, is available for film and photography projects. With over 1500 sq feet of useable space, The Factory offers a versatile and inspiring environment, providing a stunning backdrop to any Fashion, Food, Portfolio Advertising and Product Placement project. Located in London E14, close to Canary Wharf and Stratford, The Factory has off street parking and is within a short walk of Langdon Park DLR station.

CAROL HAYES
MANAGEMENT
CREATIVE & EVENT MANAGEMENT

020 7482 1555

www.carolhayesmanagement.co.uk



Factory Studio

The Factory, a Boutique Photographic Studio housed in a Victorian Warehouse, is available for film and photography projects. With over 1500 sq feet of useable space, The Factory offers a versatile and inspiring environment, providing a stunning backdrop to any Fashion, Food, Portfolio Advertising and Product Placement project. Located in London E14, close to Canary Wharf and Stratford, The Factory has off street parking and is within a short walk of Langdon Park DLR station.

CAROL HAYES
MANAGEMENT
CREATIVE & EVENT MANAGEMENT

020 7482 1555

www.carolhayesmanagement.co.uk



Factory Studio

The Factory, a Boutique Photographic Studio housed in a Victorian Warehouse, is available for film and photography projects. With over 1500 sq feet of useable space, The Factory offers a versatile and inspiring environment, providing a stunning backdrop to any Fashion, Food, Portfolio Advertising and Product Placement project. Located in London E14, close to Canary Wharf and Stratford, The Factory has off street parking and is within a short walk of Langdon Park DLR station.

CAROL HAYES
MANAGEMENT
CREATIVE & EVENT MANAGEMENT

020 7482 1555

www.carolhayesmanagement.co.uk



Factory Studio

The Factory, a Boutique Photographic Studio housed in a Victorian Warehouse, is available for film and photography projects. With over 1500 sq feet of useable space, The Factory offers a versatile and inspiring environment, providing a stunning backdrop to any Fashion, Food, Portfolio Advertising and Product Placement project. Located in London E14, close to Canary Wharf and Stratford, The Factory has off street parking and is within a short walk of Langdon Park DLR station.

CAROL HAYES
MANAGEMENT
CREATIVE & SALES MANAGEMENT

020 7482 1555

www.carolhayesmanagement.co.uk