

# St. John's Church Middlesex

St. Johns Church was originally constructed in 1837 and was used until 1992 as the local church for Uxbridge Moor. Converted over the past eight years, St. Johns Church now presents as the most wonderful home. The major restoration and refurbishment has utilised the best blend of the traditional features within the church with a high tech and contemporary specification. It is a stylish, spacious home full of character and with large areas of glazing allowing a very light feel throughout. The church is entered through a pretty entrance vestibule with concealed hand basin, glazed roof with double wooden and glazed doors of an ecclesiastical design and opening through to the principal part of the house. The ground floor cloakroom utilises the original church font as its hand basin, with an attractive and intricate stone carved detail surround. The heart of the home is the magnificent vaulted reception room with exposed wood flooring, concealed mood lighting and suspended above it the cantilevered floating platform, accessed via a floating stair case.

The sitting area with its built in semi circular sofa, has a concealed television and doubles as a cinema room. From the



020 7482 1555

[www.carolhayesmanagement.co.uk](http://www.carolhayesmanagement.co.uk)



## St. John's Church Middlesex

St. Johns Church was originally constructed in 1837 and was used until 1992 as the local church for Uxbridge Moor. Converted over the past eight years, St. Johns Church now presents as the most wonderful home. The major restoration and refurbishment has utilised the best blend of the traditional features within the church with a high tech and contemporary specification. It is a stylish, spacious home full of character and with large areas of glazing allowing a very light feel throughout. The church is entered through a pretty entrance vestibule with concealed hand basin, glazed roof with double wooden and glazed doors of an ecclesiastical design

020 7482 1555

[www.carolhayesmanagement.co.uk](http://www.carolhayesmanagement.co.uk)



## St. John's Church Middlesex

St. Johns Church was originally constructed in 1837 and was used until 1992 as the local church for Uxbridge Moor. Converted over the past eight years, St. Johns Church now presents as the most wonderful home. The major restoration and refurbishment has utilised the best blend of the traditional features within the church with a high tech and contemporary specification. It is a stylish, spacious home full of character and with large areas of glazing allowing a very light feel throughout. The church is entered through a pretty entrance vestibule with concealed hand basin, glazed roof with double wooden and glazed doors of an ecclesiastical design

020 7482 1555

[www.carolhayesmanagement.co.uk](http://www.carolhayesmanagement.co.uk)



## St. John's Church Middlesex

St. Johns Church was originally constructed in 1837 and was used until 1992 as the local church for Uxbridge Moor. Converted over the past eight years, St. Johns Church now presents as the most wonderful home. The major restoration and refurbishment has utilised the best blend of the traditional features within the church with a high tech and contemporary specification. It is a stylish, spacious home full of character and with large areas of glazing allowing a very light feel throughout. The church is entered through a pretty entrance vestibule with concealed hand basin, glazed roof with double wooden and glazed doors of an ecclesiastical design

020 7482 1555

[www.carolhayesmanagement.co.uk](http://www.carolhayesmanagement.co.uk)



## St. John's Church Middlesex

St. Johns Church was originally constructed in 1837 and was used until 1992 as the local church for Uxbridge Moor. Converted over the past eight years, St. Johns Church now presents as the most wonderful home. The major restoration and refurbishment has utilised the best blend of the traditional features within the church with a high tech and contemporary specification. It is a stylish, spacious home full of character and with large areas of glazing allowing a very light feel throughout. The church is entered through a pretty entrance vestibule with concealed hand basin, glazed roof with double wooden and glazed doors of an ecclesiastical design

020 7482 1555

[www.carolhayesmanagement.co.uk](http://www.carolhayesmanagement.co.uk)



## St. John's Church Middlesex

St. Johns Church was originally constructed in 1837 and was used until 1992 as the local church for Uxbridge Moor. Converted over the past eight years, St. Johns Church now presents as the most wonderful home. The major restoration and refurbishment has utilised the best blend of the traditional features within the church with a high tech and contemporary specification. It is a stylish, spacious home full of character and with large areas of glazing allowing a very light feel throughout. The church is entered through a pretty entrance vestibule with concealed hand basin, glazed roof with double wooden and glazed doors of an ecclesiastical design

020 7482 1555

[www.carolhayesmanagement.co.uk](http://www.carolhayesmanagement.co.uk)

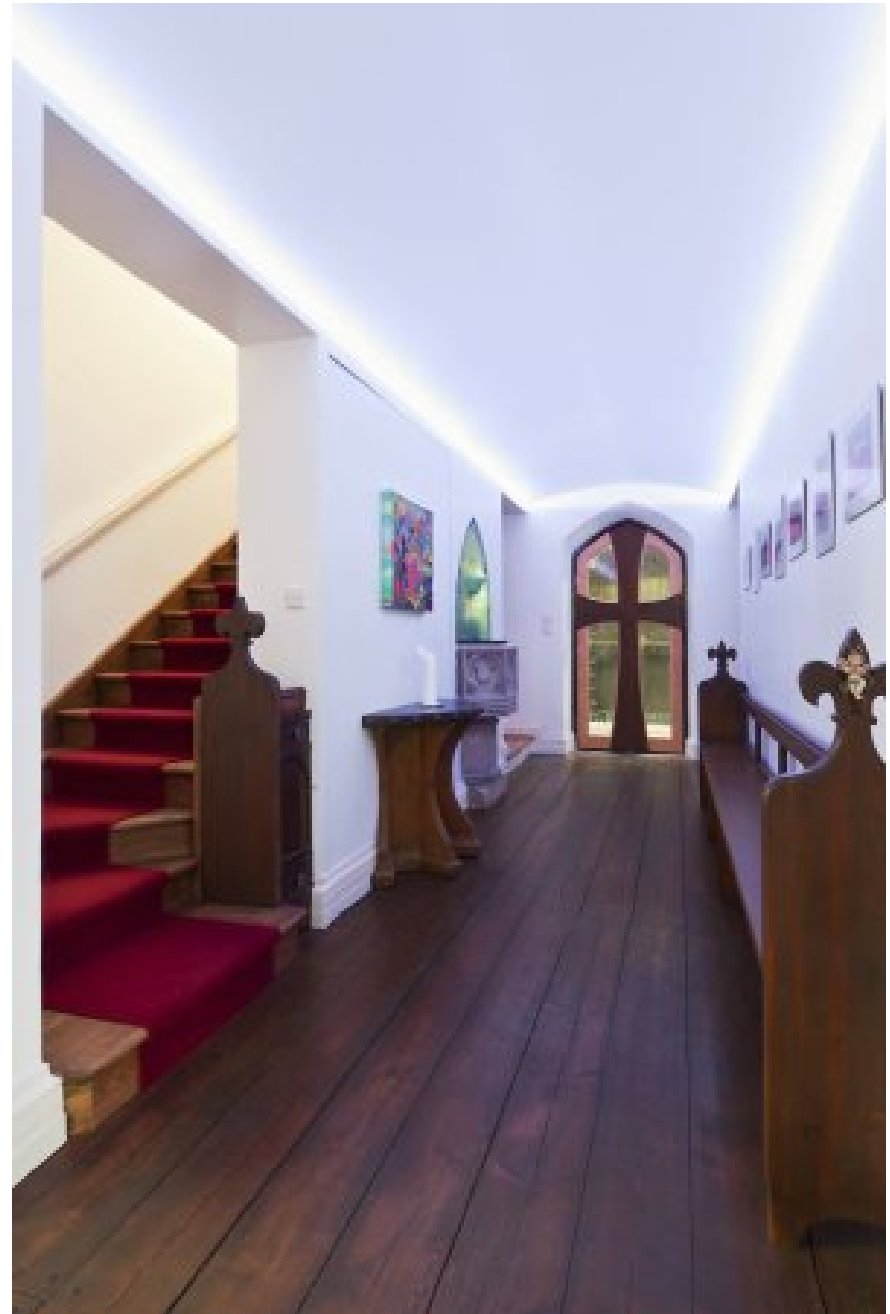


## St. John's Church Middlesex

St. Johns Church was originally constructed in 1837 and was used until 1992 as the local church for Uxbridge Moor. Converted over the past eight years, St. Johns Church now presents as the most wonderful home. The major restoration and refurbishment has utilised the best blend of the traditional features within the church with a high tech and contemporary specification. It is a stylish, spacious home full of character and with large areas of glazing allowing a very light feel throughout. The church is entered through a pretty entrance vestibule with concealed hand basin, glazed roof with double wooden and glazed doors of an ecclesiastical design

020 7482 1555

[www.carolhayesmanagement.co.uk](http://www.carolhayesmanagement.co.uk)



## St. John's Church Middlesex

St. Johns Church was originally constructed in 1837 and was used until 1992 as the local church for Uxbridge Moor. Converted over the past eight years, St. Johns Church now presents as the most wonderful home. The major restoration and refurbishment has utilised the best blend of the traditional features within the church with a high tech and contemporary specification. It is a stylish, spacious home full of character and with large areas of glazing allowing a very light feel throughout. The church is entered through a pretty entrance vestibule with concealed hand basin, glazed roof with double wooden and glazed doors of an ecclesiastical design

020 7482 1555

[www.carolhayesmanagement.co.uk](http://www.carolhayesmanagement.co.uk)





## St. John's Church Middlesex

St. Johns Church was originally constructed in 1837 and was used until 1992 as the local church for Uxbridge Moor. Converted over the past eight years, St. Johns Church now presents as the most wonderful home. The major restoration and refurbishment has utilised the best blend of the traditional features within the church with a high tech and contemporary specification. It is a stylish, spacious home full of character and with large areas of glazing allowing a very light feel throughout. The church is entered through a pretty entrance vestibule with concealed hand basin, glazed roof with double wooden and glazed doors of an ecclesiastical design

020 7482 1555

[www.carolhayesmanagement.co.uk](http://www.carolhayesmanagement.co.uk)