

Shropshire Beauty

Nestled just five miles north of Ludlow, this elegant Grade II-listed country house lies in the heart of the Shropshire Hills Area of Outstanding Natural Beauty. Dating back to the early 18th century, it's a property steeped in history, full of character and period details that reflect its heritage. Set within approximately 4.5 acres of idyllic, landscaped gardens, the grounds feature a peaceful paddock and a meandering brook that adds to the sense of tranquillity. A series of generous outbuildings offers versatile possibilities, including potential conversions (subject to consent). Within the estate, a beautifully presented one-bedroom cottage provides additional charm and flexible accommodation.





Shropshire Beauty

Nestled just five miles north of Ludlow, this elegant Grade II-listed country house lies in the heart of the Shropshire Hills Area of Outstanding Natural Beauty. Dating back to the early 18th century, it's a property steeped in history, full of character and period details that reflect its heritage. Set within approximately 4.5 acres of idyllic, landscaped gardens, the grounds feature a peaceful paddock and a meandering brook that adds to the sense of tranquillity. A series of generous outbuildings offers versatile possibilities, including potential conversions (subject to consent). Within the estate, a beautifully presented one-bedroom cottage provides additional

CAROL HAYES
MANAGEMENT

020 7482 1555

www.carolhayesmanagement.co.uk



Shropshire Beauty

Nestled just five miles north of Ludlow, this elegant Grade II-listed country house lies in the heart of the Shropshire Hills Area of Outstanding Natural Beauty. Dating back to the early 18th century, it's a property steeped in history, full of character and period details that reflect its heritage. Set within approximately 4.5 acres of idyllic, landscaped gardens, the grounds feature a peaceful paddock and a meandering brook that adds to the sense of tranquillity. A series of generous outbuildings offers versatile possibilities, including potential conversions (subject to consent). Within the estate, a beautifully presented one-bedroom cottage provides additional

CAROL HAYES
MANAGEMENT

020 7482 1555

www.carolhayesmanagement.co.uk



Shropshire Beauty

Nestled just five miles north of Ludlow, this elegant Grade II-listed country house lies in the heart of the Shropshire Hills Area of Outstanding Natural Beauty. Dating back to the early 18th century, it's a property steeped in history, full of character and period details that reflect its heritage. Set within approximately 4.5 acres of idyllic, landscaped gardens, the grounds feature a peaceful paddock and a meandering brook that adds to the sense of tranquillity. A series of generous outbuildings offers versatile possibilities, including potential conversions (subject to consent). Within the estate, a beautifully presented one-bedroom cottage provides additional

CAROL HAYES
MANAGEMENT

020 7482 1555

www.carolhayesmanagement.co.uk



Shropshire Beauty

Nestled just five miles north of Ludlow, this elegant Grade II-listed country house lies in the heart of the Shropshire Hills Area of Outstanding Natural Beauty. Dating back to the early 18th century, it's a property steeped in history, full of character and period details that reflect its heritage. Set within approximately 4.5 acres of idyllic, landscaped gardens, the grounds feature a peaceful paddock and a meandering brook that adds to the sense of tranquillity. A series of generous outbuildings offers versatile possibilities, including potential conversions (subject to consent). Within the estate, a beautifully presented one-bedroom cottage provides additional

CAROL HAYES
MANAGEMENT

020 7482 1555

www.carolhayesmanagement.co.uk



Shropshire Beauty

Nestled just five miles north of Ludlow, this elegant Grade II-listed country house lies in the heart of the Shropshire Hills Area of Outstanding Natural Beauty. Dating back to the early 18th century, it's a property steeped in history, full of character and period details that reflect its heritage. Set within approximately 4.5 acres of idyllic, landscaped gardens, the grounds feature a peaceful paddock and a meandering brook that adds to the sense of tranquillity. A series of generous outbuildings offers versatile possibilities, including potential conversions (subject to consent). Within the estate, a beautifully presented one-bedroom cottage provides additional

CAROL HAYES
MANAGEMENT

020 7482 1555

www.carolhayesmanagement.co.uk



Shropshire Beauty

Nestled just five miles north of Ludlow, this elegant Grade II-listed country house lies in the heart of the Shropshire Hills Area of Outstanding Natural Beauty. Dating back to the early 18th century, it's a property steeped in history, full of character and period details that reflect its heritage. Set within approximately 4.5 acres of idyllic, landscaped gardens, the grounds feature a peaceful paddock and a meandering brook that adds to the sense of tranquillity. A series of generous outbuildings offers versatile possibilities, including potential conversions (subject to consent). Within the estate, a beautifully presented one-bedroom cottage provides additional

CAROL HAYES
MANAGEMENT

020 7482 1555

www.carolhayesmanagement.co.uk



Shropshire Beauty

Nestled just five miles north of Ludlow, this elegant Grade II-listed country house lies in the heart of the Shropshire Hills Area of Outstanding Natural Beauty. Dating back to the early 18th century, it's a property steeped in history, full of character and period details that reflect its heritage. Set within approximately 4.5 acres of idyllic, landscaped gardens, the grounds feature a peaceful paddock and a meandering brook that adds to the sense of tranquillity. A series of generous outbuildings offers versatile possibilities, including potential conversions (subject to consent). Within the estate, a beautifully presented one-bedroom cottage provides additional

CAROL HAYES
MANAGEMENT

020 7482 1555

www.carolhayesmanagement.co.uk



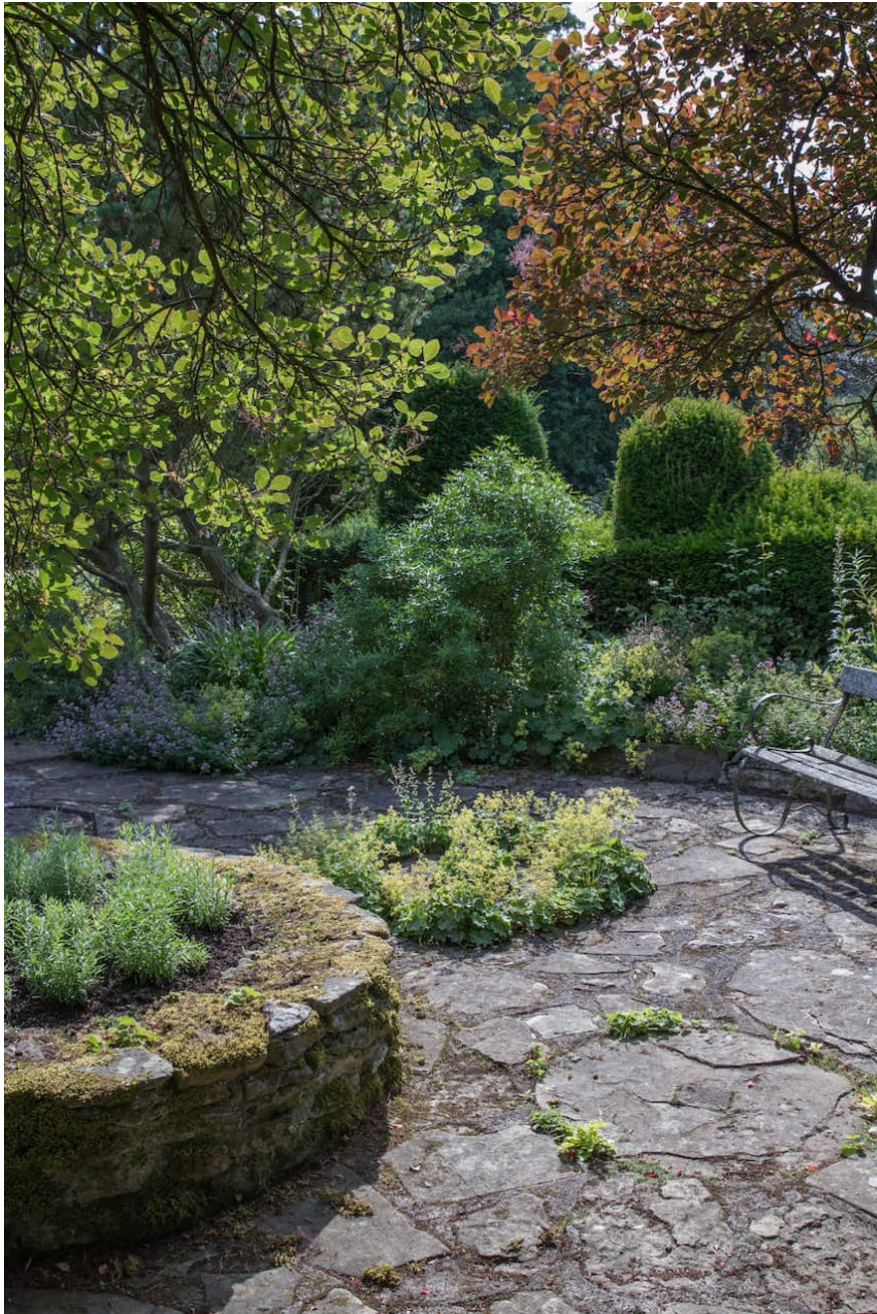
Shropshire Beauty

Nestled just five miles north of Ludlow, this elegant Grade II-listed country house lies in the heart of the Shropshire Hills Area of Outstanding Natural Beauty. Dating back to the early 18th century, it's a property steeped in history, full of character and period details that reflect its heritage. Set within approximately 4.5 acres of idyllic, landscaped gardens, the grounds feature a peaceful paddock and a meandering brook that adds to the sense of tranquillity. A series of generous outbuildings offers versatile possibilities, including potential conversions (subject to consent). Within the estate, a beautifully presented one-bedroom cottage provides additional

CAROL HAYES
MANAGEMENT

020 7482 1555

www.carolhayesmanagement.co.uk



Shropshire Beauty

Nestled just five miles north of Ludlow, this elegant Grade II-listed country house lies in the heart of the Shropshire Hills Area of Outstanding Natural Beauty. Dating back to the early 18th century, it's a property steeped in history, full of character and period details that reflect its heritage. Set within approximately 4.5 acres of idyllic, landscaped gardens, the grounds feature a peaceful paddock and a meandering brook that adds to the sense of tranquillity. A series of generous outbuildings offers versatile possibilities, including potential conversions (subject to consent). Within the estate, a beautifully presented one-bedroom cottage provides additional

CAROL HAYES
MANAGEMENT

020 7482 1555

www.carolhayesmanagement.co.uk



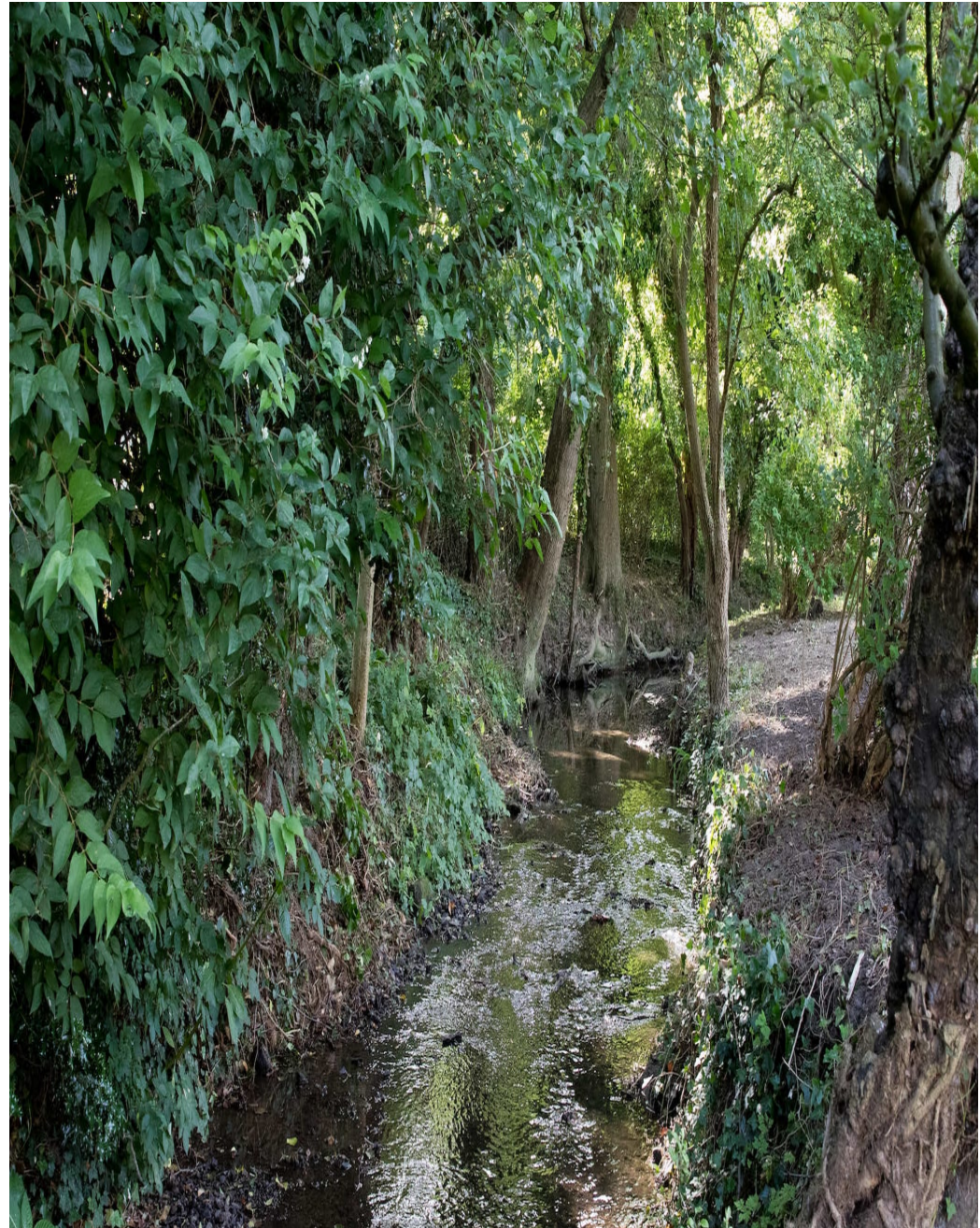
Shropshire Beauty

Nestled just five miles north of Ludlow, this elegant Grade II-listed country house lies in the heart of the Shropshire Hills Area of Outstanding Natural Beauty. Dating back to the early 18th century, it's a property steeped in history, full of character and period details that reflect its heritage. Set within approximately 4.5 acres of idyllic, landscaped gardens, the grounds feature a peaceful paddock and a meandering brook that adds to the sense of tranquillity. A series of generous outbuildings offers versatile possibilities, including potential conversions (subject to consent). Within the estate, a beautifully presented one-bedroom cottage provides additional

CAROL HAYES
MANAGEMENT

020 7482 1555

www.carolhayesmanagement.co.uk



Shropshire Beauty

Nestled just five miles north of Ludlow, this elegant Grade II-listed country house lies in the heart of the Shropshire Hills Area of Outstanding Natural Beauty. Dating back to the early 18th century, it's a property steeped in history, full of character and period details that reflect its heritage. Set within approximately 4.5 acres of idyllic, landscaped gardens, the grounds feature a peaceful paddock and a meandering brook that adds to the sense of tranquillity. A series of generous outbuildings offers versatile possibilities, including potential conversions (subject to consent). Within the estate, a beautifully presented one-bedroom cottage provides additional

CAROL HAYES
MANAGEMENT

020 7482 1555

www.carolhayesmanagement.co.uk



Shropshire Beauty

Nestled just five miles north of Ludlow, this elegant Grade II-listed country house lies in the heart of the Shropshire Hills Area of Outstanding Natural Beauty. Dating back to the early 18th century, it's a property steeped in history, full of character and period details that reflect its heritage. Set within approximately 4.5 acres of idyllic, landscaped gardens, the grounds feature a peaceful paddock and a meandering brook that adds to the sense of tranquillity. A series of generous outbuildings offers versatile possibilities, including potential conversions (subject to consent). Within the estate, a beautifully presented one-bedroom cottage provides additional

CAROL HAYES
MANAGEMENT

020 7482 1555

www.carolhayesmanagement.co.uk



Shropshire Beauty

Nestled just five miles north of Ludlow, this elegant Grade II-listed country house lies in the heart of the Shropshire Hills Area of Outstanding Natural Beauty. Dating back to the early 18th century, it's a property steeped in history, full of character and period details that reflect its heritage. Set within approximately 4.5 acres of idyllic, landscaped gardens, the grounds feature a peaceful paddock and a meandering brook that adds to the sense of tranquillity. A series of generous outbuildings offers versatile possibilities, including potential conversions (subject to consent). Within the estate, a beautifully presented one-bedroom cottage provides additional

CAROL HAYES
MANAGEMENT

020 7482 1555

www.carolhayesmanagement.co.uk



Shropshire Beauty

Nestled just five miles north of Ludlow, this elegant Grade II-listed country house lies in the heart of the Shropshire Hills Area of Outstanding Natural Beauty. Dating back to the early 18th century, it's a property steeped in history, full of character and period details that reflect its heritage. Set within approximately 4.5 acres of idyllic, landscaped gardens, the grounds feature a peaceful paddock and a meandering brook that adds to the sense of tranquillity. A series of generous outbuildings offers versatile possibilities, including potential conversions (subject to consent). Within the estate, a beautifully presented one-bedroom cottage provides additional

CAROL HAYES
MANAGEMENT

020 7482 1555

www.carolhayesmanagement.co.uk



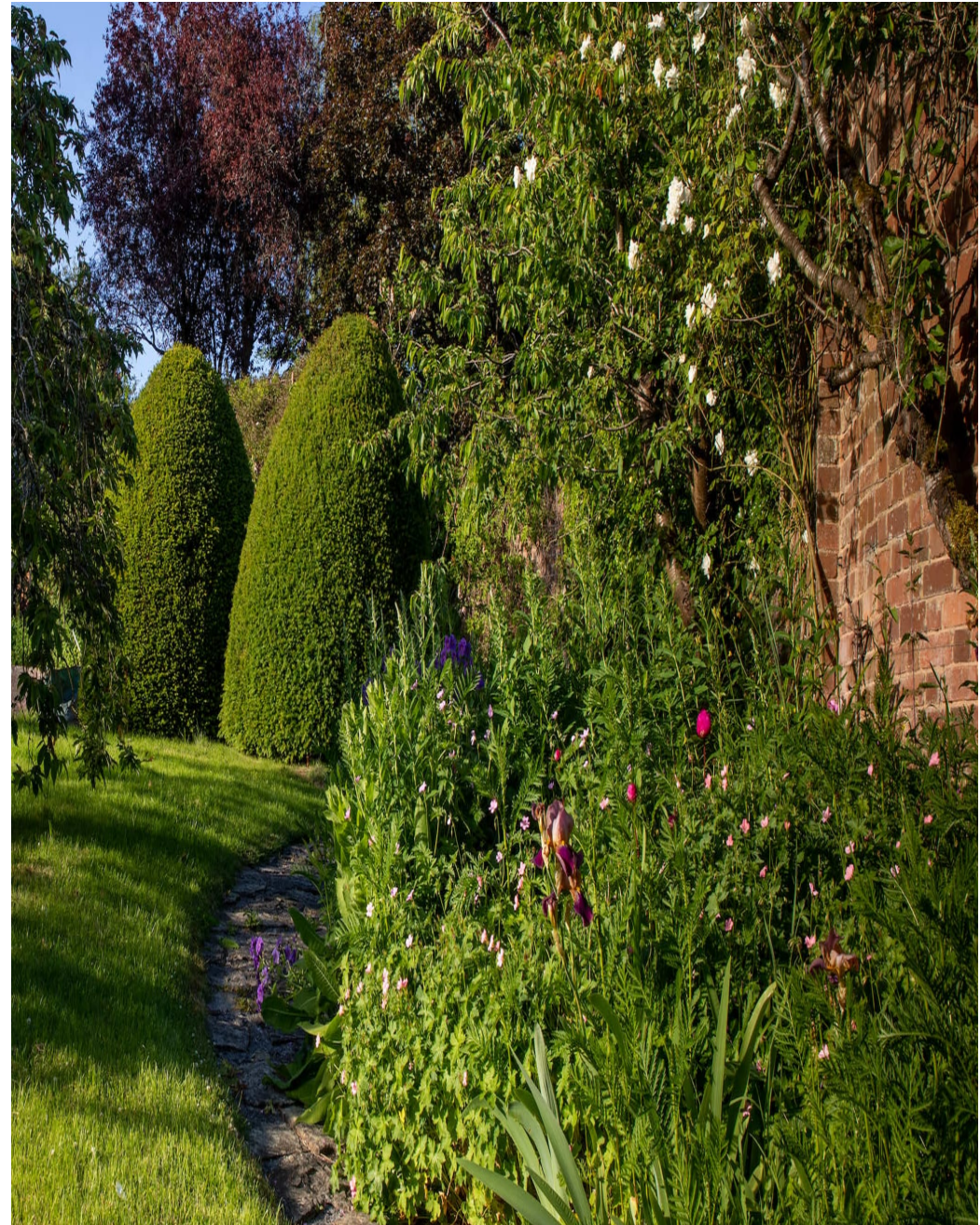
Shropshire Beauty

Nestled just five miles north of Ludlow, this elegant Grade II-listed country house lies in the heart of the Shropshire Hills Area of Outstanding Natural Beauty. Dating back to the early 18th century, it's a property steeped in history, full of character and period details that reflect its heritage. Set within approximately 4.5 acres of idyllic, landscaped gardens, the grounds feature a peaceful paddock and a meandering brook that adds to the sense of tranquillity. A series of generous outbuildings offers versatile possibilities, including potential conversions (subject to consent). Within the estate, a beautifully presented one-bedroom cottage provides additional

CAROL HAYES
MANAGEMENT

020 7482 1555

www.carolhayesmanagement.co.uk



Shropshire Beauty

Nestled just five miles north of Ludlow, this elegant Grade II-listed country house lies in the heart of the Shropshire Hills Area of Outstanding Natural Beauty. Dating back to the early 18th century, it's a property steeped in history, full of character and period details that reflect its heritage. Set within approximately 4.5 acres of idyllic, landscaped gardens, the grounds feature a peaceful paddock and a meandering brook that adds to the sense of tranquillity. A series of generous outbuildings offers versatile possibilities, including potential conversions (subject to consent). Within the estate, a beautifully presented one-bedroom cottage provides additional

CAROL HAYES
MANAGEMENT

020 7482 1555

www.carolhayesmanagement.co.uk



Shropshire Beauty

Nestled just five miles north of Ludlow, this elegant Grade II-listed country house lies in the heart of the Shropshire Hills Area of Outstanding Natural Beauty. Dating back to the early 18th century, it's a property steeped in history, full of character and period details that reflect its heritage. Set within approximately 4.5 acres of idyllic, landscaped gardens, the grounds feature a peaceful paddock and a meandering brook that adds to the sense of tranquillity. A series of generous outbuildings offers versatile possibilities, including potential conversions (subject to consent). Within the estate, a beautifully presented one-bedroom cottage provides additional

CAROL HAYES
MANAGEMENT

020 7482 1555

www.carolhayesmanagement.co.uk



Shropshire Beauty

Nestled just five miles north of Ludlow, this elegant Grade II-listed country house lies in the heart of the Shropshire Hills Area of Outstanding Natural Beauty. Dating back to the early 18th century, it's a property steeped in history, full of character and period details that reflect its heritage. Set within approximately 4.5 acres of idyllic, landscaped gardens, the grounds feature a peaceful paddock and a meandering brook that adds to the sense of tranquillity. A series of generous outbuildings offers versatile possibilities, including potential conversions (subject to consent). Within the estate, a beautifully presented one-bedroom cottage provides additional

CAROL HAYES
MANAGEMENT

020 7482 1555

www.carolhayesmanagement.co.uk



Shropshire Beauty

Nestled just five miles north of Ludlow, this elegant Grade II-listed country house lies in the heart of the Shropshire Hills Area of Outstanding Natural Beauty. Dating back to the early 18th century, it's a property steeped in history, full of character and period details that reflect its heritage. Set within approximately 4.5 acres of idyllic, landscaped gardens, the grounds feature a peaceful paddock and a meandering brook that adds to the sense of tranquillity. A series of generous outbuildings offers versatile possibilities, including potential conversions (subject to consent). Within the estate, a beautifully presented one-bedroom cottage provides additional

CAROL HAYES
MANAGEMENT

020 7482 1555

www.carolhayesmanagement.co.uk



Shropshire Beauty

Nestled just five miles north of Ludlow, this elegant Grade II-listed country house lies in the heart of the Shropshire Hills Area of Outstanding Natural Beauty. Dating back to the early 18th century, it's a property steeped in history, full of character and period details that reflect its heritage. Set within approximately 4.5 acres of idyllic, landscaped gardens, the grounds feature a peaceful paddock and a meandering brook that adds to the sense of tranquillity. A series of generous outbuildings offers versatile possibilities, including potential conversions (subject to consent). Within the estate, a beautifully presented one-bedroom cottage provides additional

CAROL HAYES
MANAGEMENT

020 7482 1555

www.carolhayesmanagement.co.uk



Shropshire Beauty

Nestled just five miles north of Ludlow, this elegant Grade II-listed country house lies in the heart of the Shropshire Hills Area of Outstanding Natural Beauty. Dating back to the early 18th century, it's a property steeped in history, full of character and period details that reflect its heritage. Set within approximately 4.5 acres of idyllic, landscaped gardens, the grounds feature a peaceful paddock and a meandering brook that adds to the sense of tranquillity. A series of generous outbuildings offers versatile possibilities, including potential conversions (subject to consent). Within the estate, a beautifully presented one-bedroom cottage provides additional

CAROL HAYES
MANAGEMENT

020 7482 1555

www.carolhayesmanagement.co.uk



Shropshire Beauty

Nestled just five miles north of Ludlow, this elegant Grade II-listed country house lies in the heart of the Shropshire Hills Area of Outstanding Natural Beauty. Dating back to the early 18th century, it's a property steeped in history, full of character and period details that reflect its heritage. Set within approximately 4.5 acres of idyllic, landscaped gardens, the grounds feature a peaceful paddock and a meandering brook that adds to the sense of tranquillity. A series of generous outbuildings offers versatile possibilities, including potential conversions (subject to consent). Within the estate, a beautifully presented one-bedroom cottage provides additional

CAROL HAYES
MANAGEMENT

020 7482 1555

www.carolhayesmanagement.co.uk



Shropshire Beauty

Nestled just five miles north of Ludlow, this elegant Grade II-listed country house lies in the heart of the Shropshire Hills Area of Outstanding Natural Beauty. Dating back to the early 18th century, it's a property steeped in history, full of character and period details that reflect its heritage. Set within approximately 4.5 acres of idyllic, landscaped gardens, the grounds feature a peaceful paddock and a meandering brook that adds to the sense of tranquillity. A series of generous outbuildings offers versatile possibilities, including potential conversions (subject to consent). Within the estate, a beautifully presented one-bedroom cottage provides additional

CAROL HAYES
MANAGEMENT

020 7482 1555

www.carolhayesmanagement.co.uk



Shropshire Beauty

Nestled just five miles north of Ludlow, this elegant Grade II-listed country house lies in the heart of the Shropshire Hills Area of Outstanding Natural Beauty. Dating back to the early 18th century, it's a property steeped in history, full of character and period details that reflect its heritage. Set within approximately 4.5 acres of idyllic, landscaped gardens, the grounds feature a peaceful paddock and a meandering brook that adds to the sense of tranquillity. A series of generous outbuildings offers versatile possibilities, including potential conversions (subject to consent). Within the estate, a beautifully presented one-bedroom cottage provides additional

CAROL HAYES
MANAGEMENT

020 7482 1555

www.carolhayesmanagement.co.uk



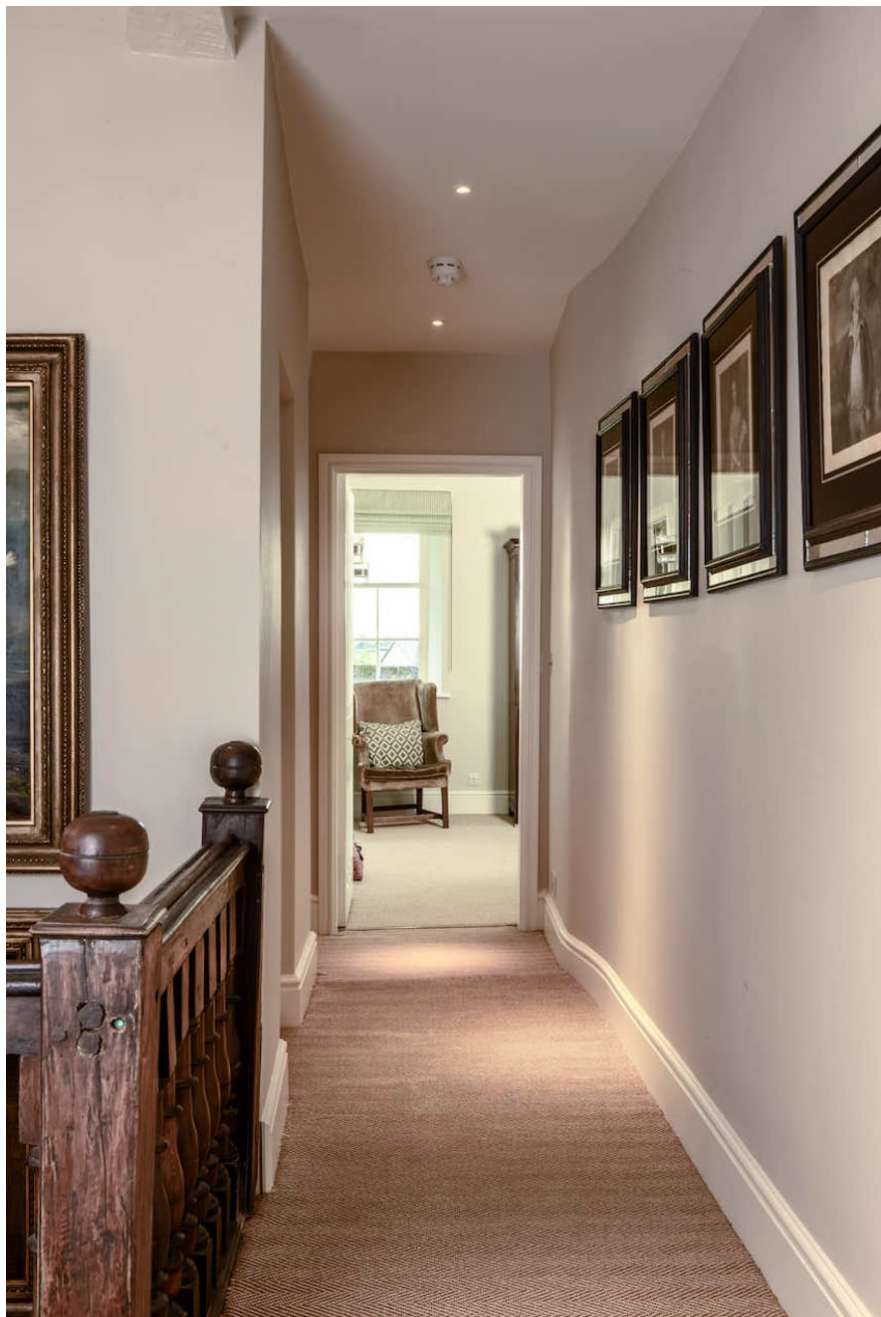
Shropshire Beauty

Nestled just five miles north of Ludlow, this elegant Grade II-listed country house lies in the heart of the Shropshire Hills Area of Outstanding Natural Beauty. Dating back to the early 18th century, it's a property steeped in history, full of character and period details that reflect its heritage. Set within approximately 4.5 acres of idyllic, landscaped gardens, the grounds feature a peaceful paddock and a meandering brook that adds to the sense of tranquillity. A series of generous outbuildings offers versatile possibilities, including potential conversions (subject to consent). Within the estate, a beautifully presented one-bedroom cottage provides additional

CAROL HAYES
MANAGEMENT

020 7482 1555

www.carolhayesmanagement.co.uk



Shropshire Beauty

Nestled just five miles north of Ludlow, this elegant Grade II-listed country house lies in the heart of the Shropshire Hills Area of Outstanding Natural Beauty. Dating back to the early 18th century, it's a property steeped in history, full of character and period details that reflect its heritage. Set within approximately 4.5 acres of idyllic, landscaped gardens, the grounds feature a peaceful paddock and a meandering brook that adds to the sense of tranquillity. A series of generous outbuildings offers versatile possibilities, including potential conversions (subject to consent). Within the estate, a beautifully presented one-bedroom cottage provides additional

CAROL HAYES
MANAGEMENT

020 7482 1555

www.carolhayesmanagement.co.uk



Shropshire Beauty

Nestled just five miles north of Ludlow, this elegant Grade II-listed country house lies in the heart of the Shropshire Hills Area of Outstanding Natural Beauty. Dating back to the early 18th century, it's a property steeped in history, full of character and period details that reflect its heritage. Set within approximately 4.5 acres of idyllic, landscaped gardens, the grounds feature a peaceful paddock and a meandering brook that adds to the sense of tranquillity. A series of generous outbuildings offers versatile possibilities, including potential conversions (subject to consent). Within the estate, a beautifully presented one-bedroom cottage provides additional

CAROL HAYES
MANAGEMENT

020 7482 1555

www.carolhayesmanagement.co.uk



Shropshire Beauty

Nestled just five miles north of Ludlow, this elegant Grade II-listed country house lies in the heart of the Shropshire Hills Area of Outstanding Natural Beauty. Dating back to the early 18th century, it's a property steeped in history, full of character and period details that reflect its heritage. Set within approximately 4.5 acres of idyllic, landscaped gardens, the grounds feature a peaceful paddock and a meandering brook that adds to the sense of tranquillity. A series of generous outbuildings offers versatile possibilities, including potential conversions (subject to consent). Within the estate, a beautifully presented one-bedroom cottage provides additional

CAROL HAYES
MANAGEMENT

020 7482 1555

www.carolhayesmanagement.co.uk



Shropshire Beauty

Nestled just five miles north of Ludlow, this elegant Grade II-listed country house lies in the heart of the Shropshire Hills Area of Outstanding Natural Beauty. Dating back to the early 18th century, it's a property steeped in history, full of character and period details that reflect its heritage. Set within approximately 4.5 acres of idyllic, landscaped gardens, the grounds feature a peaceful paddock and a meandering brook that adds to the sense of tranquillity. A series of generous outbuildings offers versatile possibilities, including potential conversions (subject to consent). Within the estate, a beautifully presented one-bedroom cottage provides additional

CAROL HAYES
MANAGEMENT

020 7482 1555

www.carolhayesmanagement.co.uk



Shropshire Beauty

Nestled just five miles north of Ludlow, this elegant Grade II-listed country house lies in the heart of the Shropshire Hills Area of Outstanding Natural Beauty. Dating back to the early 18th century, it's a property steeped in history, full of character and period details that reflect its heritage. Set within approximately 4.5 acres of idyllic, landscaped gardens, the grounds feature a peaceful paddock and a meandering brook that adds to the sense of tranquillity. A series of generous outbuildings offers versatile possibilities, including potential conversions (subject to consent). Within the estate, a beautifully presented one-bedroom cottage provides additional

CAROL HAYES
MANAGEMENT

020 7482 1555

www.carolhayesmanagement.co.uk



Shropshire Beauty

Nestled just five miles north of Ludlow, this elegant Grade II-listed country house lies in the heart of the Shropshire Hills Area of Outstanding Natural Beauty. Dating back to the early 18th century, it's a property steeped in history, full of character and period details that reflect its heritage. Set within approximately 4.5 acres of idyllic, landscaped gardens, the grounds feature a peaceful paddock and a meandering brook that adds to the sense of tranquillity. A series of generous outbuildings offers versatile possibilities, including potential conversions (subject to consent). Within the estate, a beautifully presented one-bedroom cottage provides additional

CAROL HAYES
MANAGEMENT

020 7482 1555

www.carolhayesmanagement.co.uk



Shropshire Beauty

Nestled just five miles north of Ludlow, this elegant Grade II-listed country house lies in the heart of the Shropshire Hills Area of Outstanding Natural Beauty. Dating back to the early 18th century, it's a property steeped in history, full of character and period details that reflect its heritage. Set within approximately 4.5 acres of idyllic, landscaped gardens, the grounds feature a peaceful paddock and a meandering brook that adds to the sense of tranquillity. A series of generous outbuildings offers versatile possibilities, including potential conversions (subject to consent). Within the estate, a beautifully presented one-bedroom cottage provides additional

CAROL HAYES
MANAGEMENT

020 7482 1555

www.carolhayesmanagement.co.uk



Shropshire Beauty

Nestled just five miles north of Ludlow, this elegant Grade II-listed country house lies in the heart of the Shropshire Hills Area of Outstanding Natural Beauty. Dating back to the early 18th century, it's a property steeped in history, full of character and period details that reflect its heritage. Set within approximately 4.5 acres of idyllic, landscaped gardens, the grounds feature a peaceful paddock and a meandering brook that adds to the sense of tranquillity. A series of generous outbuildings offers versatile possibilities, including potential conversions (subject to consent). Within the estate, a beautifully presented one-bedroom cottage provides additional

CAROL HAYES
MANAGEMENT

020 7482 1555

www.carolhayesmanagement.co.uk



Shropshire Beauty

Nestled just five miles north of Ludlow, this elegant Grade II-listed country house lies in the heart of the Shropshire Hills Area of Outstanding Natural Beauty. Dating back to the early 18th century, it's a property steeped in history, full of character and period details that reflect its heritage. Set within approximately 4.5 acres of idyllic, landscaped gardens, the grounds feature a peaceful paddock and a meandering brook that adds to the sense of tranquillity. A series of generous outbuildings offers versatile possibilities, including potential conversions (subject to consent). Within the estate, a beautifully presented one-bedroom cottage provides additional

CAROL HAYES
MANAGEMENT

020 7482 1555

www.carolhayesmanagement.co.uk



Shropshire Beauty

Nestled just five miles north of Ludlow, this elegant Grade II-listed country house lies in the heart of the Shropshire Hills Area of Outstanding Natural Beauty. Dating back to the early 18th century, it's a property steeped in history, full of character and period details that reflect its heritage. Set within approximately 4.5 acres of idyllic, landscaped gardens, the grounds feature a peaceful paddock and a meandering brook that adds to the sense of tranquillity. A series of generous outbuildings offers versatile possibilities, including potential conversions (subject to consent). Within the estate, a beautifully presented one-bedroom cottage provides additional

CAROL HAYES
MANAGEMENT

020 7482 1555

www.carolhayesmanagement.co.uk



Shropshire Beauty

Nestled just five miles north of Ludlow, this elegant Grade II-listed country house lies in the heart of the Shropshire Hills Area of Outstanding Natural Beauty. Dating back to the early 18th century, it's a property steeped in history, full of character and period details that reflect its heritage. Set within approximately 4.5 acres of idyllic, landscaped gardens, the grounds feature a peaceful paddock and a meandering brook that adds to the sense of tranquillity. A series of generous outbuildings offers versatile possibilities, including potential conversions (subject to consent). Within the estate, a beautifully presented one-bedroom cottage provides additional

CAROL HAYES
MANAGEMENT

020 7482 1555

www.carolhayesmanagement.co.uk



Shropshire Beauty

Nestled just five miles north of Ludlow, this elegant Grade II-listed country house lies in the heart of the Shropshire Hills Area of Outstanding Natural Beauty. Dating back to the early 18th century, it's a property steeped in history, full of character and period details that reflect its heritage. Set within approximately 4.5 acres of idyllic, landscaped gardens, the grounds feature a peaceful paddock and a meandering brook that adds to the sense of tranquillity. A series of generous outbuildings offers versatile possibilities, including potential conversions (subject to consent). Within the estate, a beautifully presented one-bedroom cottage provides additional

CAROL HAYES
MANAGEMENT

020 7482 1555

www.carolhayesmanagement.co.uk



Shropshire Beauty

Nestled just five miles north of Ludlow, this elegant Grade II-listed country house lies in the heart of the Shropshire Hills Area of Outstanding Natural Beauty. Dating back to the early 18th century, it's a property steeped in history, full of character and period details that reflect its heritage. Set within approximately 4.5 acres of idyllic, landscaped gardens, the grounds feature a peaceful paddock and a meandering brook that adds to the sense of tranquillity. A series of generous outbuildings offers versatile possibilities, including potential conversions (subject to consent). Within the estate, a beautifully presented one-bedroom cottage provides additional

CAROL HAYES
MANAGEMENT

020 7482 1555

www.carolhayesmanagement.co.uk



Shropshire Beauty

Nestled just five miles north of Ludlow, this elegant Grade II-listed country house lies in the heart of the Shropshire Hills Area of Outstanding Natural Beauty. Dating back to the early 18th century, it's a property steeped in history, full of character and period details that reflect its heritage. Set within approximately 4.5 acres of idyllic, landscaped gardens, the grounds feature a peaceful paddock and a meandering brook that adds to the sense of tranquillity. A series of generous outbuildings offers versatile possibilities, including potential conversions (subject to consent). Within the estate, a beautifully presented one-bedroom cottage provides additional

CAROL HAYES
MANAGEMENT

020 7482 1555

www.carolhayesmanagement.co.uk



Shropshire Beauty

Nestled just five miles north of Ludlow, this elegant Grade II-listed country house lies in the heart of the Shropshire Hills Area of Outstanding Natural Beauty. Dating back to the early 18th century, it's a property steeped in history, full of character and period details that reflect its heritage. Set within approximately 4.5 acres of idyllic, landscaped gardens, the grounds feature a peaceful paddock and a meandering brook that adds to the sense of tranquillity. A series of generous outbuildings offers versatile possibilities, including potential conversions (subject to consent). Within the estate, a beautifully presented one-bedroom cottage provides additional

CAROL HAYES
MANAGEMENT

020 7482 1555

www.carolhayesmanagement.co.uk



Shropshire Beauty

Nestled just five miles north of Ludlow, this elegant Grade II-listed country house lies in the heart of the Shropshire Hills Area of Outstanding Natural Beauty. Dating back to the early 18th century, it's a property steeped in history, full of character and period details that reflect its heritage. Set within approximately 4.5 acres of idyllic, landscaped gardens, the grounds feature a peaceful paddock and a meandering brook that adds to the sense of tranquillity. A series of generous outbuildings offers versatile possibilities, including potential conversions (subject to consent). Within the estate, a beautifully presented one-bedroom cottage provides additional

CAROL HAYES
MANAGEMENT

020 7482 1555

www.carolhayesmanagement.co.uk



Shropshire Beauty

Nestled just five miles north of Ludlow, this elegant Grade II-listed country house lies in the heart of the Shropshire Hills Area of Outstanding Natural Beauty. Dating back to the early 18th century, it's a property steeped in history, full of character and period details that reflect its heritage. Set within approximately 4.5 acres of idyllic, landscaped gardens, the grounds feature a peaceful paddock and a meandering brook that adds to the sense of tranquillity. A series of generous outbuildings offers versatile possibilities, including potential conversions (subject to consent). Within the estate, a beautifully presented one-bedroom cottage provides additional

CAROL HAYES
MANAGEMENT

020 7482 1555

www.carolhayesmanagement.co.uk



Shropshire Beauty

Nestled just five miles north of Ludlow, this elegant Grade II-listed country house lies in the heart of the Shropshire Hills Area of Outstanding Natural Beauty. Dating back to the early 18th century, it's a property steeped in history, full of character and period details that reflect its heritage. Set within approximately 4.5 acres of idyllic, landscaped gardens, the grounds feature a peaceful paddock and a meandering brook that adds to the sense of tranquillity. A series of generous outbuildings offers versatile possibilities, including potential conversions (subject to consent). Within the estate, a beautifully presented one-bedroom cottage provides additional

CAROL HAYES
MANAGEMENT

020 7482 1555

www.carolhayesmanagement.co.uk



Shropshire Beauty

Nestled just five miles north of Ludlow, this elegant Grade II-listed country house lies in the heart of the Shropshire Hills Area of Outstanding Natural Beauty. Dating back to the early 18th century, it's a property steeped in history, full of character and period details that reflect its heritage. Set within approximately 4.5 acres of idyllic, landscaped gardens, the grounds feature a peaceful paddock and a meandering brook that adds to the sense of tranquillity. A series of generous outbuildings offers versatile possibilities, including potential conversions (subject to consent). Within the estate, a beautifully presented one-bedroom cottage provides additional

CAROL HAYES
MANAGEMENT

020 7482 1555

www.carolhayesmanagement.co.uk



Shropshire Beauty

Nestled just five miles north of Ludlow, this elegant Grade II-listed country house lies in the heart of the Shropshire Hills Area of Outstanding Natural Beauty. Dating back to the early 18th century, it's a property steeped in history, full of character and period details that reflect its heritage. Set within approximately 4.5 acres of idyllic, landscaped gardens, the grounds feature a peaceful paddock and a meandering brook that adds to the sense of tranquillity. A series of generous outbuildings offers versatile possibilities, including potential conversions (subject to consent). Within the estate, a beautifully presented one-bedroom cottage provides additional

CAROL HAYES
MANAGEMENT

020 7482 1555

www.carolhayesmanagement.co.uk



Shropshire Beauty

Nestled just five miles north of Ludlow, this elegant Grade II-listed country house lies in the heart of the Shropshire Hills Area of Outstanding Natural Beauty. Dating back to the early 18th century, it's a property steeped in history, full of character and period details that reflect its heritage. Set within approximately 4.5 acres of idyllic, landscaped gardens, the grounds feature a peaceful paddock and a meandering brook that adds to the sense of tranquillity. A series of generous outbuildings offers versatile possibilities, including potential conversions (subject to consent). Within the estate, a beautifully presented one-bedroom cottage provides additional

CAROL HAYES
MANAGEMENT

020 7482 1555

www.carolhayesmanagement.co.uk