

London Forest Lodge IG10

London Forest Lodge is an adaptation and re-use of an abandoned Atcost Hay Barn, into a 5-bedroom 512m.sq house, spread across 2 floors. It is based on the settlement of Lippitts Hill on the edge of Epping Forest . The rooms are very spacious with high ceilings . The ground floor comprises of the lounge area, office, WC, bootroom, services cupboard, entrance lobby, hall atrium, dining room, gym, pantry and kitchen. The first floor comprises of 5 en-suite bedrooms. The building offers panoramic views over the Lee Valley from its eastern end, and was built in 1-acre plot of land. Parking available on site. Nearest tube station is Loughton.





London Forest Lodge IG10

London Forest Lodge is an adaptation and re-use of an abandoned Atcost Hay Barn, into a 5 bedroom, 512m² house, spread across 2 floors. It is based on the settlement of Lippitts Hill on the edge of Epping Forest. The rooms are very spacious with high ceilings. The ground floor comprises of the lounge area, office, WC, bootroom, services cupboard, entrance lobby, hall atrium, dining room, gym, pantry and kitchen. The first floor comprises of 5 en-suite bedrooms. The building offers panoramic views over the Lee Valley from its eastern end, and was built in 1-acre plot of land. Parking available on site. Nearest tube station is Loughton.

CAROL HAYES
MANAGEMENT

020 7482 1555

www.carolhayesmanagement.co.uk



London Forest Lodge IG10

London Forest Lodge is an adaptation and re-use of an abandoned Atcost Hay Barn, into a 5 bedroom 512 m sq house, spread across 2 floors. It is based on the settlement of Lippitts Hill on the edge of Epping Forest. The rooms are very spacious with high ceilings. The ground floor comprises of the lounge area, office, WC, bootroom, services cupboard, entrance lobby, hall atrium, dining room, gym, pantry and kitchen. The first floor comprises of 5 en-suite bedrooms. The building offers panoramic views over the Lee Valley from its eastern end, and was built in 1-acre plot of land. Parking available on site. Nearest tube station is Loughton.

CAROL HAYES
MANAGEMENT
CREATIVE PROPERTY MANAGEMENT

020 7482 1555

www.carolhayesmanagement.co.uk



London Forest Lodge IG10

London Forest Lodge is an adaptation and re-use of an abandoned Atcost Hay Barn, into a 5 bedroom 512m sq house, spread across 2 floors. It is based on the settlement of Lippitts Hill on the edge of Epping Forest. The rooms are very spacious with high ceilings. The ground floor comprises of the lounge area, office, WC, bootroom, services cupboard, entrance lobby, hall atrium, dining room, gym, pantry and kitchen. The first floor comprises of 5 en-suite bedrooms. The building offers panoramic views over the Lee Valley from its eastern end, and was built in 1-acre plot of land. Parking available on site. Nearest tube station is Loughton.

CAROL HAYES
MANAGEMENT
PROFESSIONAL PROPERTY MANAGEMENT

020 7482 1555

www.carolhayesmanagement.co.uk



London Forest Lodge IG10

London Forest Lodge is an adaptation and re-use of an abandoned Atcost Hay Barn, into a 5 bedroom 512m sq house, spread across 2 floors. It is based on the settlement of Lippitts Hill on the edge of Epping Forest. The rooms are very spacious with high ceilings. The ground floor comprises of the lounge area, office, WC, bootroom, services cupboard, entrance lobby, hall atrium, dining room, gym, pantry and kitchen. The first floor comprises of 5 en-suite bedrooms. The building offers panoramic views over the Lee Valley from its eastern end, and was built in 1-acre plot of land. Parking available on site. Nearest tube station is Loughton.

CAROL HAYES
MANAGEMENT
PROFESSIONAL PROPERTY MANAGEMENT

020 7482 1555

www.carolhayesmanagement.co.uk



London Forest Lodge IG10

London Forest Lodge is an adaptation and re-use of an abandoned Atcost Hay Barn, into a 5 bedroom, 512m² house, spread across 2 floors. It is based on the settlement of Lippitts Hill on the edge of Epping Forest. The rooms are very spacious with high ceilings. The ground floor comprises of the lounge area, office, WC, bootroom, services cupboard, entrance lobby, hall atrium, dining room, gym, pantry and kitchen. The first floor comprises of 5 en-suite bedrooms. The building offers panoramic views over the Lee Valley from its eastern end, and was built in 1-acre plot of land. Parking available on site. Nearest tube station is Loughton.

CAROL HAYES
MANAGEMENT

020 7482 1555

www.carolhayesmanagement.co.uk



London Forest Lodge IG10

London Forest Lodge is an adaptation and re-use of an abandoned Atcost Hay Barn, into a 5 bedroom, 512m sq house, spread across 2 floors. It is based on the settlement of Lippitts Hill on the edge of Epping Forest. The rooms are very spacious with high ceilings. The ground floor comprises of the lounge area, office, WC, bootroom, services cupboard, entrance lobby, hall atrium, dining room, gym, pantry and kitchen. The first floor comprises of 5 en-suite bedrooms. The building offers panoramic views over the Lee Valley from its eastern end, and was built in 1-acre plot of land. Parking available on site. Nearest tube station is Loughton.

CAROL HAYES
MANAGEMENT
COMMERCIAL & RESIDENTIAL

020 7482 1555

www.carolhayesmanagement.co.uk



London Forest Lodge IG10

London Forest Lodge is an adaptation and re-use of an abandoned Atcost Hay Barn, into a 5 bedroom 512m sq house, spread across 2 floors. It is based on the settlement of Lippitts Hill on the edge of Epping Forest. The rooms are very spacious with high ceilings. The ground floor comprises of the lounge area, office, WC, bootroom, services cupboard, entrance lobby, hall atrium, dining room, gym, pantry and kitchen. The first floor comprises of 5 en-suite bedrooms. The building offers panoramic views over the Lee Valley from its eastern end, and was built in 1-acre plot of land. Parking available on site. Nearest tube station is Loughton.

CAROL HAYES
MANAGEMENT

020 7482 1555

www.carolhayesmanagement.co.uk



London Forest Lodge IG10

London Forest Lodge is an adaptation and re-use of an abandoned Atcost Hay Barn, into a 5 bedroom, 512m sq house, spread across 2 floors. It is based on the settlement of Lippitts Hill on the edge of Epping Forest. The rooms are very spacious with high ceilings. The ground floor comprises of the lounge area, office, WC, bootroom, services cupboard, entrance lobby, hall atrium, dining room, gym, pantry and kitchen. The first floor comprises of 5 en-suite bedrooms. The building offers panoramic views over the Lee Valley from its eastern end, and was built in 1-acre plot of land. Parking available on site. Nearest tube station is Loughton.

CAROL HAYES
MANAGEMENT

020 7482 1555

www.carolhayesmanagement.co.uk



London Forest Lodge IG10

London Forest Lodge is an adaptation and re-use of an abandoned Atcost Hay Barn, into a 5 bedroom 512m sq house, spread across 2 floors. It is based on the settlement of Lippitts Hill on the edge of Epping Forest. The rooms are very spacious with high ceilings. The ground floor comprises of the lounge area, office, WC, bootroom, services cupboard, entrance lobby, hall atrium, dining room, gym, pantry and kitchen. The first floor comprises of 5 en-suite bedrooms. The building offers panoramic views over the Lee Valley from its eastern end, and was built in 1-acre plot of land. Parking available on site. Nearest tube station is Loughton.

CAROL HAYES
MANAGEMENT

020 7482 1555

www.carolhayesmanagement.co.uk



London Forest Lodge IG10

London Forest Lodge is an adaptation and re-use of an abandoned Atcost Hay Barn, into a 5 bedroom 512m sq house, spread across 2 floors. It is based on the settlement of Lippitts Hill on the edge of Epping Forest. The rooms are very spacious with high ceilings. The ground floor comprises of the lounge area, office, WC, bootroom, services cupboard, entrance lobby, hall atrium, dining room, gym, pantry and kitchen. The first floor comprises of 5 en-suite bedrooms. The building offers panoramic views over the Lee Valley from its eastern end, and was built in 1-acre plot of land. Parking available on site. Nearest tube station is Loughton.

CAROL HAYES
MANAGEMENT

020 7482 1555

www.carolhayesmanagement.co.uk



London Forest Lodge IG10

London Forest Lodge is an adaptation and re-use of an abandoned Atcost Hay Barn, into a 5 bedroom 512m sq house, spread across 2 floors. It is based on the settlement of Lippitts Hill on the edge of Epping Forest. The rooms are very spacious with high ceilings. The ground floor comprises of the lounge area, office, WC, bootroom, services cupboard, entrance lobby, hall atrium, dining room, gym, pantry and kitchen. The first floor comprises of 5 en-suite bedrooms. The building offers panoramic views over the Lee Valley from its eastern end, and was built in 1-acre plot of land. Parking available on site. Nearest tube station is Loughton.

CAROL HAYES
MANAGEMENT

020 7482 1555

www.carolhayesmanagement.co.uk



London Forest Lodge IG10

London Forest Lodge is an adaptation and re-use of an abandoned Atcost Hay Barn, into a 5 bedroom 512m sq house, spread across 2 floors. It is based on the settlement of Lippitts Hill on the edge of Epping Forest. The rooms are very spacious with high ceilings. The ground floor comprises of the lounge area, office, WC, bootroom, services cupboard, entrance lobby, hall atrium, dining room, gym, pantry and kitchen. The first floor comprises of 5 en-suite bedrooms. The building offers panoramic views over the Lee Valley from its eastern end, and was built in 1-acre plot of land. Parking available on site. Nearest tube station is Loughton.

CAROL HAYES
MANAGEMENT

020 7482 1555

www.carolhayesmanagement.co.uk



London Forest Lodge IG10

London Forest Lodge is an adaptation and re-use of an abandoned Atcost Hay Barn, into a 5 bedroom, 512m² house, spread across 2 floors. It is based on the settlement of Lippitts Hill on the edge of Epping Forest. The rooms are very spacious with high ceilings. The ground floor comprises of the lounge area, office, WC, bootroom, services cupboard, entrance lobby, hall atrium, dining room, gym, pantry and kitchen. The first floor comprises of 5 en-suite bedrooms. The building offers panoramic views over the Lee Valley from its eastern end, and was built in 1-acre plot of land. Parking available on site. Nearest tube station is Loughton.

CAROL HAYES
MANAGEMENT

020 7482 1555

www.carolhayesmanagement.co.uk



London Forest Lodge IG10

London Forest Lodge is an adaptation and re-use of an abandoned Atcost Hay Barn, into a 5 bedroom, 512 m² house, spread across 2 floors. It is based on the settlement of Lippitts Hill on the edge of Epping Forest. The rooms are very spacious with high ceilings. The ground floor comprises of the lounge area, office, WC, bootroom, services cupboard, entrance lobby, hall atrium, dining room, gym, pantry and kitchen. The first floor comprises of 5 en-suite bedrooms. The building offers panoramic views over the Lee Valley from its eastern end, and was built in 1-acre plot of land. Parking available on site. Nearest tube station is Loughton.

CAROL HAYES
MANAGEMENT

020 7482 1555

www.carolhayesmanagement.co.uk



London Forest Lodge IG10

London Forest Lodge is an adaptation and re-use of an abandoned Atcost Hay Barn, into a 5 bedroom 512m sq house, spread across 2 floors. It is based on the settlement of Lippitts Hill on the edge of Epping Forest. The rooms are very spacious with high ceilings. The ground floor comprises of the lounge area, office, WC, bootroom, services cupboard, entrance lobby, hall atrium, dining room, gym, pantry and kitchen. The first floor comprises of 5 en-suite bedrooms. The building offers panoramic views over the Lee Valley from its eastern end, and was built in 1-acre plot of land. Parking available on site. Nearest tube station is Loughton.

CAROL HAYES
MANAGEMENT

020 7482 1555

www.carolhayesmanagement.co.uk



London Forest Lodge IG10

London Forest Lodge is an adaptation and re-use of an abandoned Atcost Hay Barn, into a 5 bedroom 512m sq house, spread across 2 floors. It is based on the settlement of Lippitts Hill on the edge of Epping Forest. The rooms are very spacious with high ceilings. The ground floor comprises of the lounge area, office, WC, bootroom, services cupboard, entrance lobby, hall atrium, dining room, gym, pantry and kitchen. The first floor comprises of 5 en-suite bedrooms. The building offers panoramic views over the Lee Valley from its eastern end, and was built in 1-acre plot of land. Parking available on site. Nearest tube station is Loughton.

CAROL HAYES
MANAGEMENT

020 7482 1555

www.carolhayesmanagement.co.uk



London Forest Lodge IG10

London Forest Lodge is an adaptation and re-use of an abandoned Atcost Hay Barn, into a 5 bedroom 512m sq house spread across 2 floors. It is based on the settlement of Lippitts Hill on the edge of Epping Forest. The rooms are very spacious with high ceilings. The ground floor comprises of the lounge area, office, WC, bootroom, services cupboard, entrance lobby, hall atrium, dining room, gym, pantry and kitchen. The first floor comprises of 5 en-suite bedrooms. The building offers panoramic views over the Lee Valley from its eastern end, and was built in 1-acre plot of land. Parking available on site. Nearest tube station is Loughton.

CAROL HAYES
MANAGEMENT

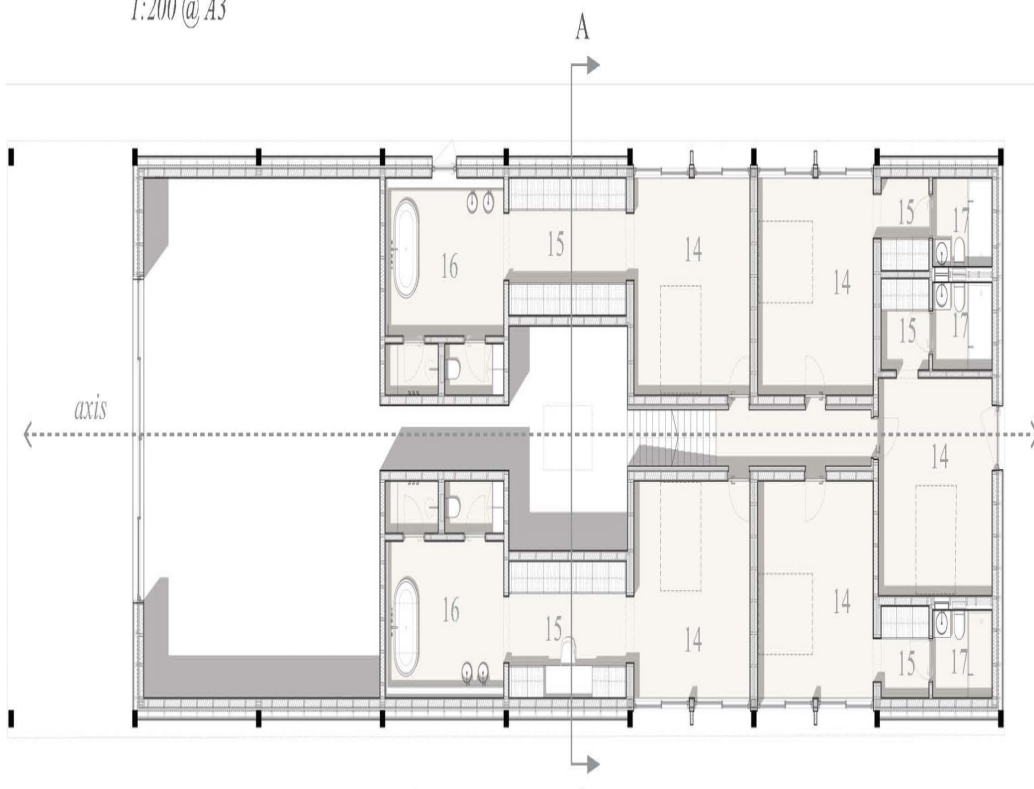
020 7482 1555

www.carolhayesmanagement.co.uk



Proposed Ground Floor Plan (1)

1:200 @ A3



Proposed First Floor Plan (1)

London Forest Lodge IG10

London Forest Lodge is an adaptation and re-use of an abandoned Atcost Hay Barn, into a 5 bedroom, 512 m² house, spread across 2 floors. It is based on the settlement of Lippitts Hill on the edge of Epping Forest. The rooms are very spacious with high ceilings. The ground floor comprises of the lounge area, office, WC, bootroom, services cupboard, entrance lobby, hall atrium, dining room, gym, pantry and kitchen. The first floor comprises of 5 en-suite bedrooms. The building offers panoramic views over the Lee Valley from its eastern end, and was built in 1-acre plot of land. Parking available on site. Nearest tube station is Loughton.

CAROL HAYES
MANAGEMENT

020 7482 1555

www.carolhayesmanagement.co.uk