

## Laundry E5

A light filled renovated factory owned by interior stylist as a natural daylight location. Created with the use of different textures to provide multi backdrops - wall :-reclaimed mahogany - gym floor - bare plaster - shuttered concrete - corrugated sheets :- floats paraquet - poured concrete and mahogany The location has interesting props, a variety of house plants and vintage furniture. First and second floor accessible by a spiral staircase.





## Laundry E5

A light filled renovated factory owned by interior stylist as a natural daylight location. Created with the use of different textures to provide multi backdrops - wall :- reclaimed mahogany - gym floor - bare plaster - shuttered concrete - corrugated sheets - hoots paraquet - poured concrete and mahogany The location has interesting props, a variety of house plants and vintage furniture. First and second floor accessible by a spiral staircase.

**CAROL HAYES**  
MANAGEMENT

020 7482 1555

[www.carolhayesmanagement.co.uk](http://www.carolhayesmanagement.co.uk)





## Laundry E5

A light filled renovated factory owned by interior stylist as a natural daylight location. Created with the use of different textures to provide multi backdrops - wall :- reclaimed mahogany - gym floor - bare plaster - shuttered concrete - corrugated sheets - roots paraquet - poured concrete and mahogany The location has interesting props, a variety of house plants and vintage furniture. First and second floor accessible by a spiral staircase.

**CAROL HAYES**  
MANAGEMENT  
PROPS & SETS

020 7482 1555

[www.carolhayesmanagement.co.uk](http://www.carolhayesmanagement.co.uk)



## Laundry E5

A light filled renovated factory owned by interior stylist as a natural daylight location. Created with the use of different textures to provide multi backdrops - wall :- reclaimed mahogany - gym floor - bare plaster - shuttered concrete - corrugated sheets - hoots parquette - poured concrete and mahogany The location has interesting props, a variety of house plants and vintage furniture. First and second floor accessible by a spiral staircase.

**CAROL HAYES**  
**MANAGEMENT**  
 STYLING & PROPERTY MANAGEMENT

020 7482 1555

[www.carolhayesmanagement.co.uk](http://www.carolhayesmanagement.co.uk)





## Laundry E5

A light filled renovated factory owned by interior stylist as a natural daylight location. Created with the use of different textures to provide multi backdrops - wall :- reclaimed mahogany - gym floor - bare plaster - shuttered concrete - corrugated sheets - roots parquet - poured concrete and mahogany The location has interesting props, a variety of house plants and vintage furniture. First and second floor accessible by a spiral staircase.

**CAROL HAYES**  
MANAGEMENT

020 7482 1555

[www.carolhayesmanagement.co.uk](http://www.carolhayesmanagement.co.uk)



## Laundry E5

A light filled renovated factory owned by interior stylist as a natural daylight location. Created with the use of different textures to provide multi backdrops - wall :- reclaimed mahogany - gym floor - bare plaster - shuttered concrete - corrugated sheets - roots parquet - poured concrete and mahogany The location has interesting props, a variety of house plants and vintage furniture. First and second floor accessible by a spiral staircase.

**CAROL HAYES**  
MANAGEMENT  
PROPS & STYLING

020 7482 1555

[www.carolhayesmanagement.co.uk](http://www.carolhayesmanagement.co.uk)





## Laundry E5

A light filled renovated factory owned by interior stylist as a natural daylight location. Created with the use of different textures to provide multi backdrops - wall :- reclaimed mahogany - gym floor - bare plaster - shuttered concrete - corrugated sheets - floors parquet - poured concrete and mahogany The location has interesting props, a variety of house plants and vintage furniture. First and second floor accessible by a spiral staircase.

**CAROL HAYES**  
MANAGEMENT

020 7482 1555

[www.carolhayesmanagement.co.uk](http://www.carolhayesmanagement.co.uk)





## Laundry E5

A light filled renovated factory owned by interior stylist as a natural daylight location. Created with the use of different textures to provide multi backdrops - wall :- reclaimed mahogany - gym floor - bare plaster - shuttered concrete - corrugated sheets - floors parquet - poured concrete and mahogany The location has interesting props, a variety of house plants and vintage furniture. First and second floor accessible by a spiral staircase.

**CAROL HAYES**  
MANAGEMENT

020 7482 1555

[www.carolhayesmanagement.co.uk](http://www.carolhayesmanagement.co.uk)





## Laundry E5

A light filled renovated factory owned by interior stylist as a natural daylight location. Created with the use of different textures to provide multi backdrops - wall :- reclaimed mahogany - gym floor - bare plaster - shuttered concrete - corrugated sheets - roots parquet - poured concrete and mahogany The location has interesting props, a variety of house plants and vintage furniture. First and second floor accessible by a spiral staircase.

**CAROL HAYES**  
MANAGEMENT  
SCENES AND PROPS STYLE MANAGEMENT

020 7482 1555

[www.carolhayesmanagement.co.uk](http://www.carolhayesmanagement.co.uk)



## Laundry E5

A light filled renovated factory owned by interior stylist as a natural daylight location. Created with the use of different textures to provide multi backdrops - wall :- reclaimed mahogany - gym floor - bare plaster - shuttered concrete - corrugated sheets - hoods parquet - poured concrete and mahogany The location has interesting props, a variety of house plants and vintage furniture. First and second floor accessible by a spiral staircase.

**CAROL HAYES**  
MANAGEMENT

020 7482 1555

[www.carolhayesmanagement.co.uk](http://www.carolhayesmanagement.co.uk)





## Laundry E5

A light filled renovated factory owned by interior stylist as a natural daylight location. Created with the use of different textures to provide multi backdrops - wall :- reclaimed mahogany - gym floor - bare plaster - shuttered concrete - corrugated sheets - roots paraquet - poured concrete and mahogany The location has interesting props, a variety of house plants and vintage furniture. First and second floor accessible by a spiral staircase.

**CAROL HAYES**  
MANAGEMENT  
PROPS & STYLING

020 7482 1555

[www.carolhayesmanagement.co.uk](http://www.carolhayesmanagement.co.uk)



## Laundry E5

A light filled renovated factory owned by interior stylist as a natural daylight location. Created with the use of different textures to provide multi backdrops - wall :- reclaimed mahogany - gym floor - bare plaster - shuttered concrete - corrugated sheets - hoots parquet - poured concrete and mahogany The location has interesting props, a variety of house plants and vintage furniture. First and second floor accessible by a spiral staircase.

**CAROL HAYES**  
MANAGEMENT

020 7482 1555

[www.carolhayesmanagement.co.uk](http://www.carolhayesmanagement.co.uk)





## Laundry E5

A light filled renovated factory owned by interior stylist as a natural daylight location. Created with the use of different textures to provide multi backdrops - wall :- reclaimed mahogany - gym floor - bare plaster - shuttered concrete - corrugated sheets - roots paraquet - poured concrete and mahogany The location has interesting props, a variety of house plants and vintage furniture. First and second floor accessible by a spiral staircase.

**CAROL HAYES**  
MANAGEMENT  
PROPS & STYLING

020 7482 1555

[www.carolhayesmanagement.co.uk](http://www.carolhayesmanagement.co.uk)



## Laundry E5

A light filled renovated factory owned by interior stylist as a natural daylight location. Created with the use of different textures to provide multi backdrops - wall :- reclaimed mahogany - gym floor - bare plaster - shuttered concrete - corrugated sheets - roots parquet - poured concrete and mahogany The location has interesting props, a variety of house plants and vintage furniture. First and second floor accessible by a spiral staircase.

**CAROL HAYES**  
MANAGEMENT  
PROPS & STYLING

020 7482 1555

[www.carolhayesmanagement.co.uk](http://www.carolhayesmanagement.co.uk)





## Laundry E5

A light filled renovated factory owned by interior stylist as a natural daylight location. Created with the use of different textures to provide multi backdrops - wall :- reclaimed mahogany - gym floor - bare plaster - shuttered concrete - corrugated sheets - roots parquet - poured concrete and mahogany The location has interesting props, a variety of house plants and vintage furniture. First and second floor accessible by a spiral staircase.

**CAROL HAYES**  
MANAGEMENT  
PROPS & STYLING

020 7482 1555

[www.carolhayesmanagement.co.uk](http://www.carolhayesmanagement.co.uk)



## Laundry E5

A light filled renovated factory owned by interior stylist as a natural daylight location. Created with the use of different textures to provide multi backdrops - wall :- reclaimed mahogany - gym floor - bare plaster - shuttered concrete - corrugated sheets - roots paraquet - poured concrete and mahogany The location has interesting props, a variety of house plants and vintage furniture. First and second floor accessible by a spiral staircase.

**CAROL HAYES**  
MANAGEMENT  
PROPS & STYLING

020 7482 1555

[www.carolhayesmanagement.co.uk](http://www.carolhayesmanagement.co.uk)





## Laundry E5

A light filled renovated factory owned by interior stylist as a natural daylight location. Created with the use of different textures to provide multi backdrops - wall :- reclaimed mahogany - gym floor - bare plaster - shuttered concrete - corrugated sheets - roots parquet - poured concrete and mahogany The location has interesting props, a variety of house plants and vintage furniture. First and second floor accessible by a spiral staircase.

**CAROL HAYES**  
MANAGEMENT  
PROPS & STYLING

020 7482 1555

[www.carolhayesmanagement.co.uk](http://www.carolhayesmanagement.co.uk)



## Laundry E5

A light filled renovated factory owned by interior stylist as a natural daylight location. Created with the use of different textures to provide multi backdrops - wall :- reclaimed mahogany - gym floor - bare plaster - shuttered concrete - corrugated sheets - roots parquet - poured concrete and mahogany The location has interesting props, a variety of house plants and vintage furniture. First and second floor accessible by a spiral staircase.

**CAROL HAYES**  
MANAGEMENT

020 7482 1555

[www.carolhayesmanagement.co.uk](http://www.carolhayesmanagement.co.uk)





## Laundry E5

A light filled renovated factory owned by interior stylist as a natural daylight location. Created with the use of different textures to provide multi backdrops - wall :- reclaimed mahogany - gym floor - bare plaster - shuttered concrete - corrugated sheets - roots parquet - poured concrete and mahogany The location has interesting props, a variety of house plants and vintage furniture. First and second floor accessible by a spiral staircase.

**CAROL HAYES**  
MANAGEMENT  
PROPS & STYLING

020 7482 1555

[www.carolhayesmanagement.co.uk](http://www.carolhayesmanagement.co.uk)



## Laundry E5

A light filled renovated factory owned by interior stylist as a natural daylight location. Created with the use of different textures to provide multi backdrops - wall :- reclaimed mahogany - gym floor - bare plaster - shuttered concrete - corrugated sheets - roots parquet - poured concrete and mahogany The location has interesting props, a variety of house plants and vintage furniture. First and second floor accessible by a spiral staircase.

**CAROL HAYES**  
MANAGEMENT  
CREATING PROPS & STYLING MANAGEMENT

020 7482 1555

[www.carolhayesmanagement.co.uk](http://www.carolhayesmanagement.co.uk)





## Laundry E5

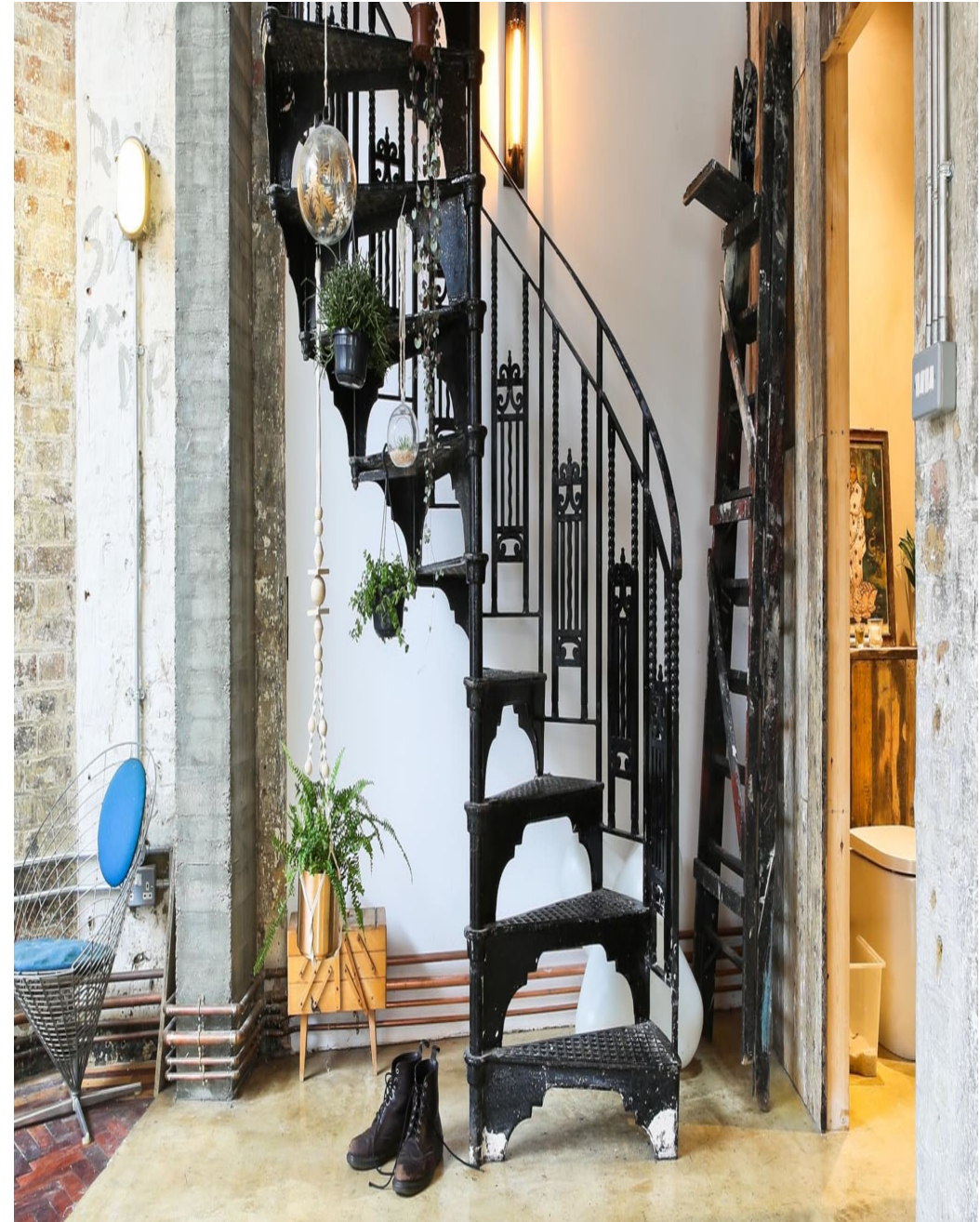
A light filled renovated factory owned by interior stylist as a natural daylight location. Created with the use of different textures to provide multi backdrops - wall :- reclaimed mahogany - gym floor - bare plaster - shuttered concrete - corrugated sheets - roots parquet - poured concrete and mahogany The location has interesting props, a variety of house plants and vintage furniture. First and second floor accessible by a spiral staircase.

**CAROL HAYES**  
MANAGEMENT  
CREATING PROPS & STYLING MANAGEMENT

020 7482 1555

[www.carolhayesmanagement.co.uk](http://www.carolhayesmanagement.co.uk)





## Laundry E5

A light filled renovated factory owned by interior stylist as a natural daylight location. Created with the use of different textures to provide multi backdrops - wall :- reclaimed mahogany - gym floor - bare plaster - shuttered concrete - corrugated sheets - roots parquet - poured concrete and mahogany The location has interesting props, a variety of house plants and vintage furniture. First and second floor accessible by a spiral staircase.

**CAROL HAYES**  
MANAGEMENT

020 7482 1555

[www.carolhayesmanagement.co.uk](http://www.carolhayesmanagement.co.uk)





## Laundry E5

A light filled renovated factory owned by interior stylist as a natural daylight location. Created with the use of different textures to provide multi backdrops - wall :- reclaimed mahogany - gym floor - bare plaster - shuttered concrete - corrugated sheets - roots parquet - poured concrete and mahogany The location has interesting props, a variety of house plants and vintage furniture. First and second floor accessible by a spiral staircase.

**CAROL HAYES**  
MANAGEMENT  
PROPS & STYLING

020 7482 1555

[www.carolhayesmanagement.co.uk](http://www.carolhayesmanagement.co.uk)



## Laundry E5

A light filled renovated factory owned by interior stylist as a natural daylight location. Created with the use of different textures to provide multi backdrops - wall :- reclaimed mahogany - gym floor - bare plaster - shuttered concrete - corrugated sheets - roots paraquet - poured concrete and mahogany The location has interesting props, a variety of house plants and vintage furniture. First and second floor accessible by a spiral staircase.

**CAROL HAYES**  
MANAGEMENT  
CREATIVE PROPS & STYLING MANAGEMENT

020 7482 1555

[www.carolhayesmanagement.co.uk](http://www.carolhayesmanagement.co.uk)





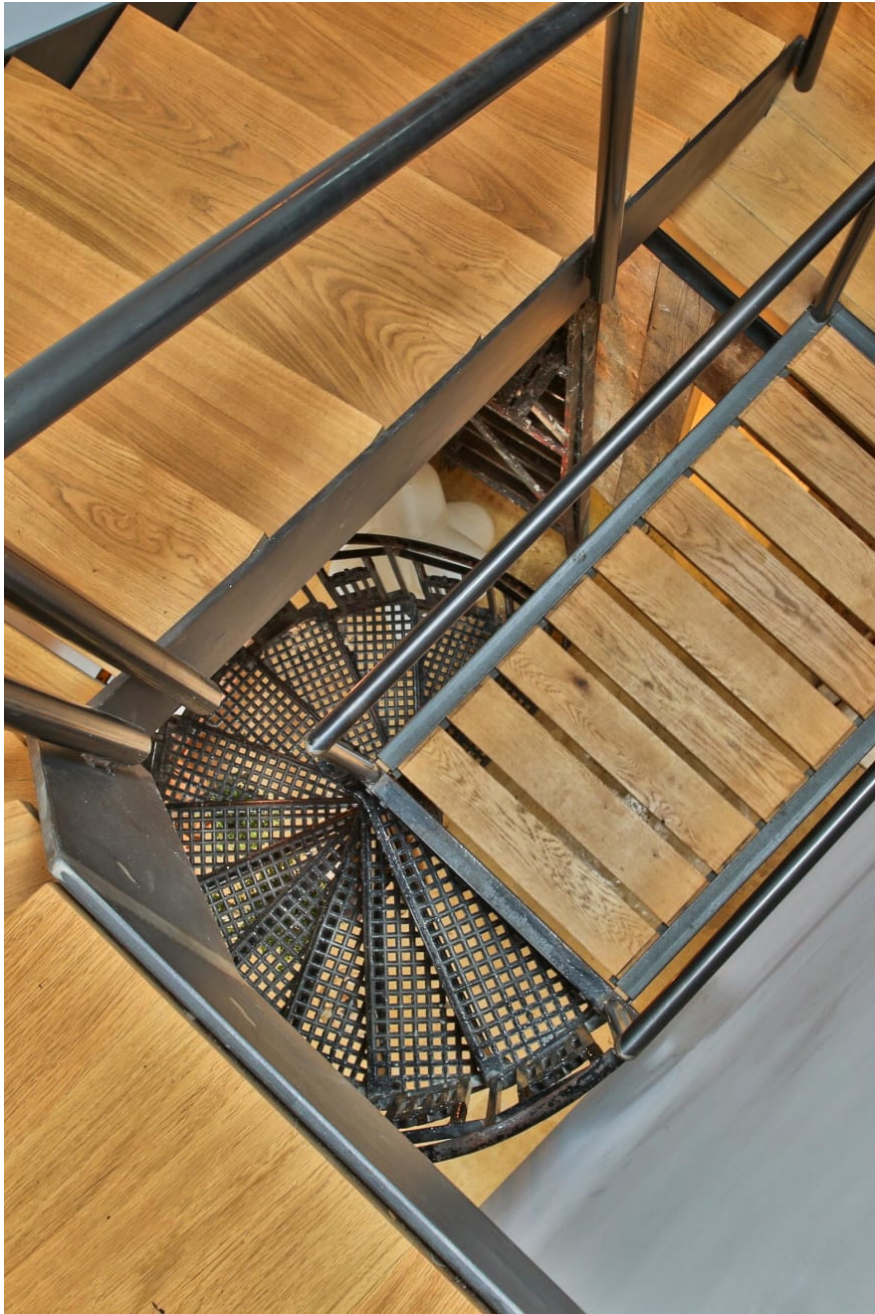
## Laundry E5

A light filled renovated factory owned by interior stylist as a natural daylight location. Created with the use of different textures to provide multi backdrops - wall :- reclaimed mahogany - gym floor - bare plaster - shuttered concrete - corrugated sheets - roots parquet - poured concrete and mahogany The location has interesting props, a variety of house plants and vintage furniture. First and second floor accessible by a spiral staircase.

**CAROL HAYES**  
MANAGEMENT  
CREATING PROPS & STYLING MANAGEMENT

020 7482 1555

[www.carolhayesmanagement.co.uk](http://www.carolhayesmanagement.co.uk)



## Laundry E5

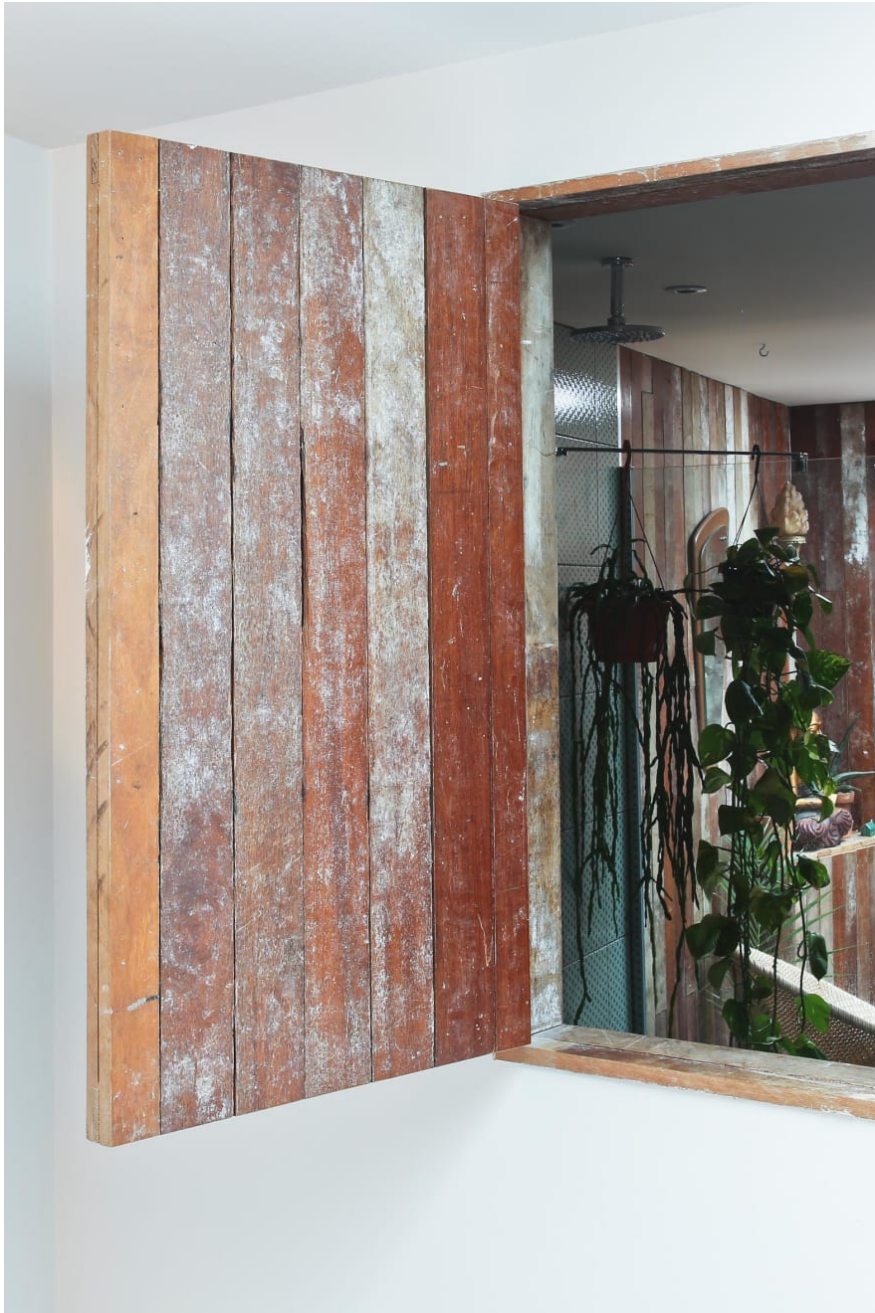
A light filled renovated factory owned by interior stylist as a natural daylight location. Created with the use of different textures to provide multi backdrops - wall :- reclaimed mahogany - gym floor - bare plaster - shuttered concrete - corrugated sheets - roots parquet - poured concrete and mahogany The location has interesting props, a variety of house plants and vintage furniture. First and second floor accessible by a spiral staircase.

**CAROL HAYES**  
**MANAGEMENT**  
CREATING PROPS & SETS MANAGEMENT

020 7482 1555

[www.carolhayesmanagement.co.uk](http://www.carolhayesmanagement.co.uk)





## Laundry E5

A light filled renovated factory owned by interior stylist as a natural daylight location. Created with the use of different textures to provide multi backdrops - wall :- reclaimed mahogany - gym floor - bare plaster - shuttered concrete - corrugated sheets - roots paraquet - poured concrete and mahogany The location has interesting props, a variety of house plants and vintage furniture. First and second floor accessible by a spiral staircase.

**CAROL HAYES**  
MANAGEMENT  
PROPS & STYLING MANAGEMENT

020 7482 1555

[www.carolhayesmanagement.co.uk](http://www.carolhayesmanagement.co.uk)



## Laundry E5

A light filled renovated factory owned by interior stylist as a natural daylight location. Created with the use of different textures to provide multi backdrops - wall :- reclaimed mahogany - gym floor - bare plaster - shuttered concrete - corrugated sheets - roots parquet - poured concrete and mahogany The location has interesting props, a variety of house plants and vintage furniture. First and second floor accessible by a spiral staircase.

**CAROL HAYES**  
MANAGEMENT  
PROPERTY & EVENT MANAGEMENT

020 7482 1555

[www.carolhayesmanagement.co.uk](http://www.carolhayesmanagement.co.uk)





## Laundry E5

A light filled renovated factory owned by interior stylist as a natural daylight location. Created with the use of different textures to provide multi backdrops - wall :- reclaimed mahogany - gym floor - bare plaster - shuttered concrete - corrugated sheets - hoots parquet - poured concrete and mahogany The location has interesting props, a variety of house plants and vintage furniture. First and second floor accessible by a spiral staircase.

**CAROL HAYES**  
MANAGEMENT

020 7482 1555

[www.carolhayesmanagement.co.uk](http://www.carolhayesmanagement.co.uk)



## Laundry E5

A light filled renovated factory owned by interior stylist as a natural daylight location. Created with the use of different textures to provide multi backdrops - wall :- reclaimed mahogany - gym floor - bare plaster - shuttered concrete - corrugated sheets - roots parquet - poured concrete and mahogany The location has interesting props, a variety of house plants and vintage furniture. First and second floor accessible by a spiral staircase.

**CAROL HAYES**  
MANAGEMENT  
PROPS & STYLING

020 7482 1555

[www.carolhayesmanagement.co.uk](http://www.carolhayesmanagement.co.uk)





## Laundry E5

A light filled renovated factory owned by interior stylist as a natural daylight location. Created with the use of different textures to provide multi backdrops - wall :- reclaimed mahogany - gym floor - bare plaster - shuttered concrete - corrugated sheets - roots parquet - poured concrete and mahogany The location has interesting props, a variety of house plants and vintage furniture. First and second floor accessible by a spiral staircase.

**CAROL HAYES**  
**MANAGEMENT**  
CREATIVE PROPS & STYLE MANAGEMENT

020 7482 1555

[www.carolhayesmanagement.co.uk](http://www.carolhayesmanagement.co.uk)



## Laundry E5

A light filled renovated factory owned by interior stylist as a natural daylight location. Created with the use of different textures to provide multi backdrops - wall :- reclaimed mahogany - gym floor - bare plaster - shuttered concrete - corrugated sheets - hoots paraquet - poured concrete and mahogany The location has interesting props, a variety of house plants and vintage furniture. First and second floor accessible by a spiral staircase.

**CAROL HAYES**  
MANAGEMENT  
PROPERTY & STYLING

020 7482 1555

[www.carolhayesmanagement.co.uk](http://www.carolhayesmanagement.co.uk)





## Laundry E5

A light filled renovated factory owned by interior stylist as a natural daylight location. Created with the use of different textures to provide multi backdrops - wall :- reclaimed mahogany - gym floor - bare plaster - shuttered concrete - corrugated sheets - roots paraquet - poured concrete and mahogany The location has interesting props, a variety of house plants and vintage furniture. First and second floor accessible by a spiral staircase.

**CAROL HAYES**  
MANAGEMENT  
CREATING PROPS & SETS MANAGEMENT

020 7482 1555

[www.carolhayesmanagement.co.uk](http://www.carolhayesmanagement.co.uk)





## Laundry E5

A light filled renovated factory owned by interior stylist as a natural daylight location. Created with the use of different textures to provide multi backdrops - wall :- reclaimed mahogany - gym floor - bare plaster - shuttered concrete - corrugated sheets - roots paraquet - poured concrete and mahogany The location has interesting props, a variety of house plants and vintage furniture. First and second floor accessible by a spiral staircase.

**CAROL HAYES**  
MANAGEMENT

020 7482 1555

[www.carolhayesmanagement.co.uk](http://www.carolhayesmanagement.co.uk)





## Laundry E5

A light filled renovated factory owned by interior stylist as a natural daylight location. Created with the use of different textures to provide multi backdrops - wall :- reclaimed mahogany - gym floor - bare plaster - shuttered concrete - corrugated sheets - roots parquet - poured concrete and mahogany The location has interesting props, a variety of house plants and vintage furniture. First and second floor accessible by a spiral staircase.

**CAROL HAYES**  
**MANAGEMENT**  
CREATING PROPS & STYLING MANAGEMENT

020 7482 1555

[www.carolhayesmanagement.co.uk](http://www.carolhayesmanagement.co.uk)



## Laundry E5

A light filled renovated factory owned by interior stylist as a natural daylight location. Created with the use of different textures to provide multi backdrops - wall :- reclaimed mahogany - gym floor - bare plaster - shuttered concrete - corrugated sheets - hoots paraquet - poured concrete and mahogany The location has interesting props, a variety of house plants and vintage furniture. First and second floor accessible by a spiral staircase.

**CAROL HAYES**  
MANAGEMENT

020 7482 1555

[www.carolhayesmanagement.co.uk](http://www.carolhayesmanagement.co.uk)





## Laundry E5

A light filled renovated factory owned by interior stylist as a natural daylight location. Created with the use of different textures to provide multi backdrops - wall :- reclaimed mahogany - gym floor - bare plaster - shuttered concrete - corrugated sheets - roots parquet - poured concrete and mahogany The location has interesting props, a variety of house plants and vintage furniture. First and second floor accessible by a spiral staircase.

**CAROL HAYES**  
**MANAGEMENT**  
CREATING PROPS & STYLING MANAGEMENT

020 7482 1555

[www.carolhayesmanagement.co.uk](http://www.carolhayesmanagement.co.uk)