

Greengate Manor - Epsom

Historic estate with elegant Georgian house only 18 miles from central London. The property provides complete privacy, is walled on all sides with a haha and stone balustrade facing east allowing wonderful views over paddocks and horses, trees and over 3 acres of immaculate lawns and woods. The main house has four bedrooms, two bathrooms, an exceptional, marble-floored entrance hall with octagonal drawing room (original mid 1700's marble fireplace and cornice) dining room and library leading from it. There is a south-facing terrace with doors from the dining room and library. A bright picture-hung corridor leads to the kitchen and back entrance. There is a stunning indoor swimming pool. There are three flats in the adjacent outbuildings available for a variety of purposes including crew accommodation (6 people, two twin, 1 double, 1 single) Very large gravel courtyards allow for plenty of parking, much of it hidden behind high brick walls.





Greengate Manor - Epsom

Historic estate with elegant Georgian house only 18 miles from central London. The property provides complete privacy, is valued on all sides with a haka and stone balustrade facing east allowing wonderful views over paddocks and horses, trees and over 3 acres of immaculate lawns and woods. The main house has four bedrooms, two bathrooms, an exceptional, marble-floored entrance hall with octagonal drawing room (original mid 1700's marble fireplace and cornice) dining room and library leading from it. There is a south-facing terrace with doors from the dining room and library. A bright picture-hung corridor leads to the kitchen and back

CAROL HAYES
MANAGEMENT

020 7482 1555

www.carolhayesmanagement.co.uk



Greengate Manor - Epsom

Historic estate with elegant Georgian house only 18 miles from central London. The property provides complete privacy, is valued on all sides with a haka and stone balustrade facing east allowing wonderful views over paddocks and horses, trees and over 3 acres of immaculate lawns and woods. The main house has four bedrooms, two bathrooms, an exceptional, marble-floored entrance hall with octagonal drawing room (original mid 1700's marble fireplace and cornice) dining room and library leading from it. There is a south-facing terrace with doors from the dining room and library. A bright picture-hung corridor leads to the kitchen and back

CAROL HAYES
MANAGEMENT

020 7482 1555

www.carolhayesmanagement.co.uk



Greengate Manor - Epsom

Historic estate with elegant Georgian house only 18 miles from central London. The property provides complete privacy, is valued on all sides with a haka and stone balustrade facing east allowing wonderful views over paddocks and horses, trees and over 3 acres of immaculate lawns and woods. The main house has four bedrooms, two bathrooms, an exceptional, marble-floored entrance hall with octagonal drawing room (original mid 1700's marble fireplace and cornice) dining room and library leading from it. There is a south-facing terrace with doors from the dining room and library. A bright picture-hung corridor leads to the kitchen and back

CAROL HAYES
MANAGEMENT

020 7482 1555

www.carolhayesmanagement.co.uk



Greengate Manor - Epsom

Historic estate with elegant Georgian house only 18 miles from central London. The property provides complete privacy, is valued on all sides with a haka and stone balustrade facing east allowing wonderful views over paddocks and horses, trees and over 3 acres of immaculate lawns and woods. The main house has four bedrooms, two bathrooms, an exceptional, marble-floored entrance hall with octagonal drawing room (original mid 1700's marble fireplace and cornice) dining room and library leading from it. There is a south-facing terrace with doors from the dining room and library. A bright picture-hung corridor leads to the kitchen and back

CAROL HAYES
MANAGEMENT

020 7482 1555

www.carolhayesmanagement.co.uk



Greengate Manor - Epsom

Historic estate with elegant Georgian house only 18 miles from central London. The property provides complete privacy, is valued on all sides with a haka and stone balustrade facing east allowing wonderful views over paddocks and horses, trees and over 3 acres of immaculate lawns and woods. The main house has four bedrooms, two bathrooms, an exceptional, marble-floored entrance hall with octagonal drawing room (original mid 1700's marble fireplace and cornice) dining room and library leading from it. There is a south-facing terrace with doors from the dining room and library. A bright picture-hung corridor leads to the kitchen and back

CAROL HAYES
MANAGEMENT

020 7482 1555

www.carolhayesmanagement.co.uk



Greengate Manor - Epsom

Historic estate with elegant Georgian house only 18 miles from central London. The property provides complete privacy, is valued on all sides with a haka and stone balustrade facing east allowing wonderful views over paddocks and horses, trees and over 3 acres of immaculate lawns and woods. The main house has four bedrooms, two bathrooms, an exceptional, marble-floored entrance hall with octagonal drawing room (original mid 1700's marble fireplace and cornice) dining room and library leading from it. There is a south-facing terrace with doors from the dining room and library. A bright picture-hung corridor leads to the kitchen and back

CAROL HAYES
MANAGEMENT

020 7482 1555

www.carolhayesmanagement.co.uk



Greengate Manor - Epsom

Historic estate with elegant Georgian house only 18 miles from central London. The property provides complete privacy, is valued on all sides with a haka and stone balustrade facing east allowing wonderful views over paddocks and horses, trees and over 3 acres of immaculate lawns and woods. The main house has four bedrooms, two bathrooms, an exceptional, marble-floored entrance hall with octagonal drawing room (original mid 1700's marble fireplace and cornice) dining room and library leading from it. There is a south-facing terrace with doors from the dining room and library. A bright picture-hung corridor leads to the kitchen and back

CAROL HAYES
MANAGEMENT

020 7482 1555

www.carolhayesmanagement.co.uk



Greengate Manor - Epsom

Historic estate with elegant Georgian house only 18 miles from central London. The property provides complete privacy, is valued on all sides with a haka and stone balustrade facing east allowing wonderful views over paddocks and horses, trees and over 3 acres of immaculate lawns and woods. The main house has four bedrooms, two bathrooms, an exceptional, marble-floored entrance hall with octagonal drawing room (original mid 1700's marble fireplace and cornice) dining room and library leading from it. There is a south-facing terrace with doors from the dining room and library. A bright picture-hung corridor leads to the kitchen and back

CAROL HAYES
MANAGEMENT

020 7482 1555

www.carolhayesmanagement.co.uk



Greengate Manor - Epsom

Historic estate with elegant Georgian house only 18 miles from central London. The property provides complete privacy, is valued on all sides with a haka and stone balustrade facing east allowing wonderful views over paddocks and horses, trees and over 3 acres of immaculate lawns and woods. The main house has four bedrooms, two bathrooms, an exceptional, marble-floored entrance hall with octagonal drawing room (original mid 1700's marble fireplace and cornice) dining room and library leading from it. There is a south-facing terrace with doors from the dining room and library. A bright picture-hung corridor leads to the kitchen and back

CAROL HAYES
MANAGEMENT

020 7482 1555

www.carolhayesmanagement.co.uk



Greengate Manor - Epsom

Historic estate with elegant Georgian house only 18 miles from central London. The property provides complete privacy, surrounded on all sides with a haka and stone balustrade facing east allowing wonderful views over paddocks and horses, trees and over 3 acres of immaculate lawns and woods. The main house has four bedrooms, two bathrooms, an exceptional, marble-floored entrance hall with octagonal drawing room (original mid 1700's marble fireplace and cornice) dining room and library leading from it. There is a south-facing terrace with doors from the dining room and library. A bright picture-hung corridor leads to the kitchen and back

CAROL HAYES
MANAGEMENT

020 7482 1555

www.carolhayesmanagement.co.uk



Greengate Manor - Epsom

Historic estate with elegant Georgian house only 18 miles from central London. The property provides complete privacy, is walled on all sides with a haka and stone balustrade facing east allowing wonderful views over paddocks and horses, trees and over 3 acres of immaculate lawns and woods. The main house has four bedrooms, two bathrooms, an exceptional, marble-floored entrance hall with octagonal drawing room (original mid 1700's marble fireplace and cornice) dining room and library leading from it. There is a south-facing terrace with doors from the dining room and library. A bright picture-hung corridor leads to the kitchen and back

CAROL HAYES
MANAGEMENT

020 7482 1555

www.carolhayesmanagement.co.uk



Greengate Manor - Epsom

Historic estate with elegant Georgian house only 18 miles from central London. The property provides complete privacy, is walled on all sides with a hoha and stone balustrade facing east allowing wonderful views over paddocks and horses, trees and over 3 acres of immaculate lawns and woods. The main house has four bedrooms, two bathrooms, an exceptional, marble-floored entrance hall with octagonal drawing room (original mid 1700's marble fireplace and cornice) dining room and library leading from it. There is a south-facing terrace with doors from the dining room and library. A bright picture-hung corridor leads to the kitchen and back

CAROL HAYES
MANAGEMENT

020 7482 1555

www.carolhayesmanagement.co.uk



Greengate Manor - Epsom

Historic estate with elegant Georgian house only 18 miles from central London. The property provides complete privacy, is valued on all sides with a haka and stone balustrade facing east allowing wonderful views over paddocks and horses, trees and over 3 acres of immaculate lawns and woods. The main house has four bedrooms, two bathrooms, an exceptional, marble-floored entrance hall with octagonal drawing room (original mid 1700's marble fireplace and cornice) dining room and library leading from it. There is a south-facing terrace with doors from the dining room and library. A bright picture-hung corridor leads to the kitchen and back

CAROL HAYES
MANAGEMENT

020 7482 1555

www.carolhayesmanagement.co.uk



Greengate Manor - Epsom

Historic estate with elegant Georgian house only 18 miles from central London. The property provides complete privacy, is valued on all sides with a haka and stone balustrade facing east allowing wonderful views over paddocks and horses, trees and over 3 acres of immaculate lawns and woods. The main house has four bedrooms, two bathrooms, an exceptional, marble-floored entrance hall with octagonal drawing room (original mid 1700's marble fireplace and cornice) dining room and library leading from it. There is a south-facing terrace with doors from the dining room and library. A bright picture-hung corridor leads to the kitchen and back

CAROL HAYES
MANAGEMENT

020 7482 1555

www.carolhayesmanagement.co.uk



Greengate Manor - Epsom

Historic estate with elegant Georgian house only 18 miles from central London. The property provides complete privacy, is valued on all sides with a haka and stone balustrade facing east allowing wonderful views over paddocks and horses, trees and over 3 acres of immaculate lawns and woods. The main house has four bedrooms, two bathrooms, an exceptional, marble-floored entrance hall with octagonal drawing room (original mid 1700's marble fireplace and cornice) dining room and library leading from it. There is a south-facing terrace with doors from the dining room and library. A bright picture-hung corridor leads to the kitchen and back

CAROL HAYES
MANAGEMENT

020 7482 1555

www.carolhayesmanagement.co.uk



Greengate Manor - Epsom

Historic estate with elegant Georgian house only 18 miles from central London. The property provides complete privacy, is valued on all sides with a haka and stone balustrade facing east allowing wonderful views over paddocks and horses, trees and over 3 acres of immaculate lawns and woods. The main house has four bedrooms, two bathrooms, an exceptional, marble-floored entrance hall with octagonal drawing room (original mid 1700's marble fireplace and cornice) dining room and library leading from it. There is a south-facing terrace with doors from the dining room and library. A bright picture-hung corridor leads to the kitchen and back

CAROL HAYES
MANAGEMENT

020 7482 1555

www.carolhayesmanagement.co.uk



Greengate Manor - Epsom

Historic estate with elegant Georgian house only 18 miles from central London. The property provides complete privacy, is valued on all sides with a haka and stone balustrade facing east allowing wonderful views over paddocks and horses, trees and over 3 acres of immaculate lawns and woods. The main house has four bedrooms, two bathrooms, an exceptional, marble-floored entrance hall with octagonal drawing room (original mid 1700's marble fireplace and cornice) dining room and library leading from it. There is a south-facing terrace with doors from the dining room and library. A bright picture-hung corridor leads to the kitchen and back

CAROL HAYES
MANAGEMENT

020 7482 1555

www.carolhayesmanagement.co.uk



Greengate Manor - Epsom

Historic estate with elegant Georgian house only 18 miles from central London. The property provides complete privacy, is walled on all sides with a haka and stone balustrade facing east allowing wonderful views over paddocks and horses, trees and over 3 acres of immaculate lawns and woods. The main house has four bedrooms, two bathrooms, an exceptional, marble-floored entrance hall with octagonal drawing room (original mid 1700's marble fireplace and cornice) dining room and library leading from it. There is a south-facing terrace with doors from the dining room and library. A bright picture-hung corridor leads to the kitchen and back

CAROL HAYES
MANAGEMENT

020 7482 1555

www.carolhayesmanagement.co.uk



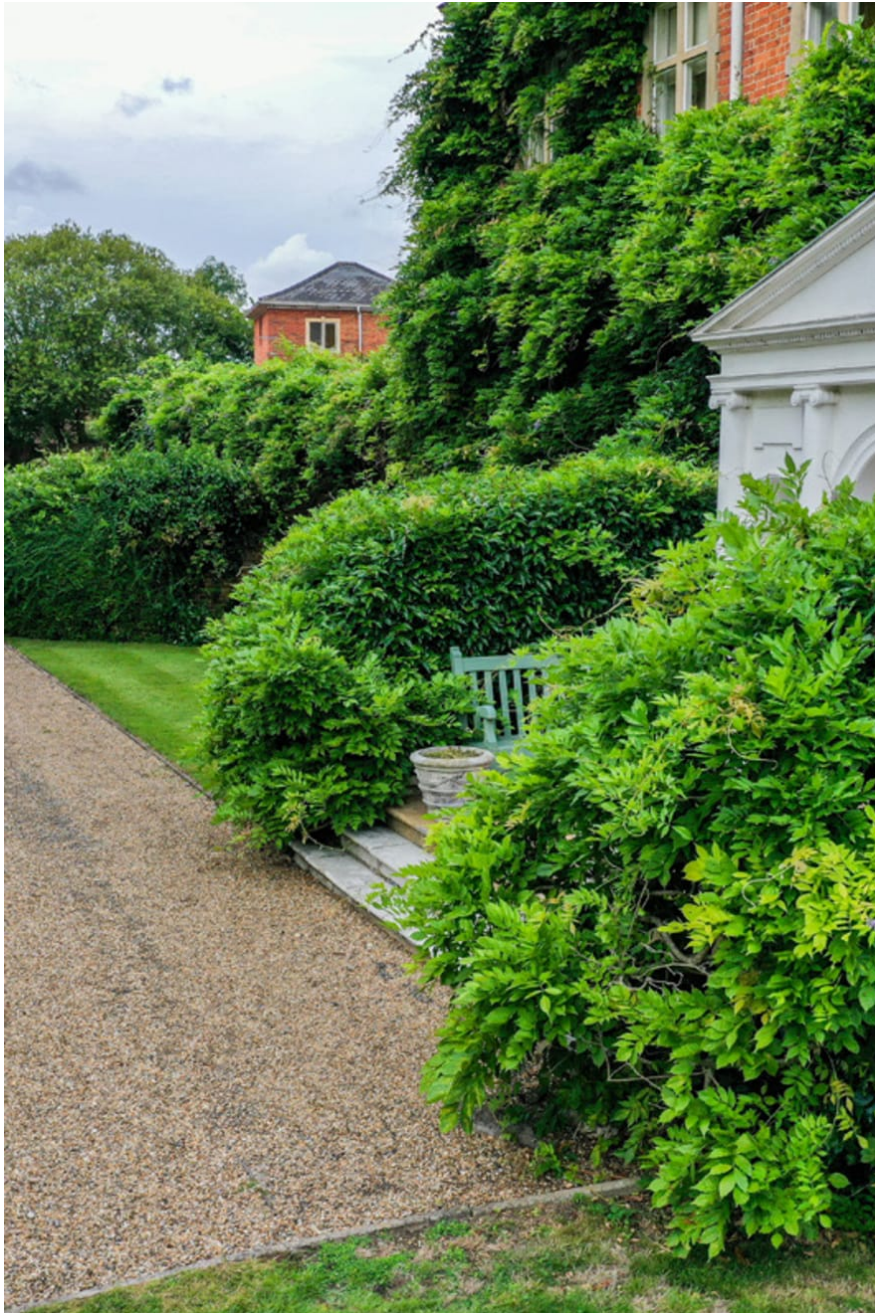
Greengate Manor - Epsom

Historic estate with elegant Georgian house only 18 miles from central London. The property provides complete privacy, is valued on all sides with a haka and stone balustrade facing east allowing wonderful views over paddocks and horses, trees and over 3 acres of immaculate lawns and woods. The main house has four bedrooms, two bathrooms, an exceptional, marble-floored entrance hall with octagonal drawing room (original mid 1700's marble fireplace and cornice) dining room and library leading from it. There is a south-facing terrace with doors from the dining room and library. A bright picture-hung corridor leads to the kitchen and back

CAROL HAYES
MANAGEMENT

020 7482 1555

www.carolhayesmanagement.co.uk



Greengate Manor - Epsom

Historic estate with elegant Georgian house only 18 miles from central London. The property provides complete privacy, is walled on all sides with a haka and stone balustrade facing east allowing wonderful views over paddocks and horses, trees and over 3 acres of immaculate lawns and woods. The main house has four bedrooms, two bathrooms, an exceptional, marble-floored entrance hall with octagonal drawing room (original mid 1700's marble fireplace and cornice) dining room and library leading from it. There is a south-facing terrace with doors from the dining room and library. A bright picture-hung corridor leads to the kitchen and back

CAROL HAYES
MANAGEMENT

020 7482 1555

www.carolhayesmanagement.co.uk



Greengate Manor - Epsom

Historic estate with elegant Georgian house only 18 miles from central London. The property provides complete privacy, is valued on all sides with a hawthorn and stone balustrade facing east allowing wonderful views over paddocks and horses, trees and over 3 acres of immaculate lawns and woods. The main house has four bedrooms, two bathrooms, an exceptional, marble-floored entrance hall with octagonal drawing room (original mid 1700's marble fireplace and cornice) dining room and library leading from it. There is a south-facing terrace with doors from the dining room and library. A bright picture-hung corridor leads to the kitchen and back

CAROL HAYES
MANAGEMENT

020 7482 1555

www.carolhayesmanagement.co.uk



Greengate Manor - Epsom

Historic estate with elegant Georgian house only 18 miles from central London. The property provides complete privacy, is valued on all sides with a haka and stone balustrade facing east allowing wonderful views over paddocks and horses, trees and over 3 acres of immaculate lawns and woods. The main house has four bedrooms, two bathrooms, an exceptional, marble-floored entrance hall with octagonal drawing room (original mid 1700's marble fireplace and cornice) dining room and library leading from it. There is a south-facing terrace with doors from the dining room and library. A bright picture-hung corridor leads to the kitchen and back

CAROL HAYES
MANAGEMENT

020 7482 1555

www.carolhayesmanagement.co.uk



Greengate Manor - Epsom

Historic estate with elegant Georgian house only 18 miles from central London. The property provides complete privacy, is valued on all sides with a haka and stone balustrade facing east allowing wonderful views over paddocks and horses, trees and over 3 acres of immaculate lawns and woods. The main house has four bedrooms, two bathrooms, an exceptional, marble-floored entrance hall with octagonal drawing room (original mid 1700's marble fireplace and cornice) dining room and library leading from it. There is a south-facing terrace with doors from the dining room and library. A bright picture-hung corridor leads to the kitchen and back

CAROL HAYES
MANAGEMENT

020 7482 1555

www.carolhayesmanagement.co.uk



Greengate Manor - Epsom

Historic estate with elegant Georgian house only 18 miles from central London. The property provides complete privacy, is walled on all sides with a haha and stone balustrade facing east allowing wonderful views over paddocks and horses, trees and over 3 acres of immaculate lawns and woods. The main house has four bedrooms, two bathrooms, an exceptional, marble-floored entrance hall with octagonal drawing room (original mid 1700's marble fireplace and cornice) dining room and library leading from it. There is a south-facing terrace with doors from the dining room and library. A bright picture-hung corridor leads to the kitchen and back

CAROL HAYES
MANAGEMENT

020 7482 1555

www.carolhayesmanagement.co.uk



Greengate Manor - Epsom

Historic estate with elegant Georgian house only 18 miles from central London. The property provides complete privacy, is valued on all sides with a hoha and stone balustrade facing east allowing wonderful views over paddocks and horses, trees and over 3 acres of immaculate lawns and woods. The main house has four bedrooms, two bathrooms, an exceptional, marble-floored entrance hall with octagonal drawing room (original mid 1700's marble fireplace and cornice) dining room and library leading from it. There is a south-facing terrace with doors from the dining room and library. A bright picture-hung corridor leads to the kitchen and back

CAROL HAYES
MANAGEMENT

020 7482 1555

www.carolhayesmanagement.co.uk



Greengate Manor - Epsom

Historic estate with elegant Georgian house only 18 miles from central London. The property provides complete privacy, is valued on all sides with a haka and stone balustrade facing east allowing wonderful views over paddocks and horses, trees and over 3 acres of immaculate lawns and woods. The main house has four bedrooms, two bathrooms, an exceptional, marble-floored entrance hall with octagonal drawing room (original mid 1700's marble fireplace and cornice) dining room and library leading from it. There is a south-facing terrace with doors from the dining room and library. A bright picture-hung corridor leads to the kitchen and back

CAROL HAYES
MANAGEMENT

020 7482 1555

www.carolhayesmanagement.co.uk



Greengate Manor - Epsom

Historic estate with elegant Georgian house only 18 miles from central London. The property provides complete privacy, is valued on all sides with a hoha and stone balustrade facing east allowing wonderful views over paddocks and horses, trees and over 3 acres of immaculate lawns and woods. The main house has four bedrooms, two bathrooms, an exceptional, marble-floored entrance hall with octagonal drawing room (original mid 1700's marble fireplace and cornice) dining room and library leading from it. There is a south-facing terrace with doors from the dining room and library. A bright picture-hung corridor leads to the kitchen and back

CAROL HAYES
MANAGEMENT

020 7482 1555

www.carolhayesmanagement.co.uk



Greengate Manor - Epsom

Historic estate with elegant Georgian house only 18 miles from central London. The property provides complete privacy, is valued on all sides with a haka and stone balustrade facing east allowing wonderful views over paddocks and horses, trees and over 3 acres of immaculate lawns and woods. The main house has four bedrooms, two bathrooms, an exceptional, marble-floored entrance hall with octagonal drawing room (original mid 1700's marble fireplace and cornice) dining room and library leading from it. There is a south-facing terrace with doors from the dining room and library. A bright picture-hung corridor leads to the kitchen and back

CAROL HAYES
MANAGEMENT

020 7482 1555

www.carolhayesmanagement.co.uk



Greengate Manor - Epsom

Historic estate with elegant Georgian house only 18 miles from central London. The property provides complete privacy, is valued on all sides with a haka and stone balustrade facing east allowing wonderful views over paddocks and horses, trees and over 3 acres of immaculate lawns and woods. The main house has four bedrooms, two bathrooms, an exceptional, marble-floored entrance hall with octagonal drawing room (original mid 1700's marble fireplace and cornice) dining room and library leading from it. There is a south-facing terrace with doors from the dining room and library. A bright picture-hung corridor leads to the kitchen and back

CAROL HAYES
MANAGEMENT

020 7482 1555

www.carolhayesmanagement.co.uk



Greengate Manor - Epsom

Historic estate with elegant Georgian house only 18 miles from central London. The property provides complete privacy, is walled on all sides with a haka and stone balustrade facing east allowing wonderful views over paddocks and horses, trees and over 3 acres of immaculate lawns and woods. The main house has four bedrooms, two bathrooms, an exceptional, marble-floored entrance hall with octagonal drawing room (original mid 1700's marble fireplace and cornice) dining room and library leading from it. There is a south-facing terrace with doors from the dining room and library. A bright picture-hung corridor leads to the kitchen and back

CAROL HAYES
MANAGEMENT

020 7482 1555

www.carolhayesmanagement.co.uk



Greengate Manor - Epsom

Historic estate with elegant Georgian house only 18 miles from central London. The property provides complete privacy, is valued on all sides with a haka and stone balustrade facing east allowing wonderful views over paddocks and horses, trees and over 3 acres of immaculate lawns and woods. The main house has four bedrooms, two bathrooms, an exceptional, marble-floored entrance hall with octagonal drawing room (original mid 1700's marble fireplace and cornice) dining room and library leading from it. There is a south-facing terrace with doors from the dining room and library. A bright picture-hung corridor leads to the kitchen and back

CAROL HAYES
MANAGEMENT

020 7482 1555

www.carolhayesmanagement.co.uk



Greengate Manor - Epsom

Historic estate with elegant Georgian house only 18 miles from central London. The property provides complete privacy, is valued on all sides with a haka and stone balustrade facing east allowing wonderful views over paddocks and horses, trees and over 3 acres of immaculate lawns and woods. The main house has four bedrooms, two bathrooms, an exceptional, marble-floored entrance hall with octagonal drawing room (original mid 1700's marble fireplace and cornice) dining room and library leading from it. There is a south-facing terrace with doors from the dining room and library. A bright picture-hung corridor leads to the kitchen and back

CAROL HAYES
MANAGEMENT

020 7482 1555

www.carolhayesmanagement.co.uk



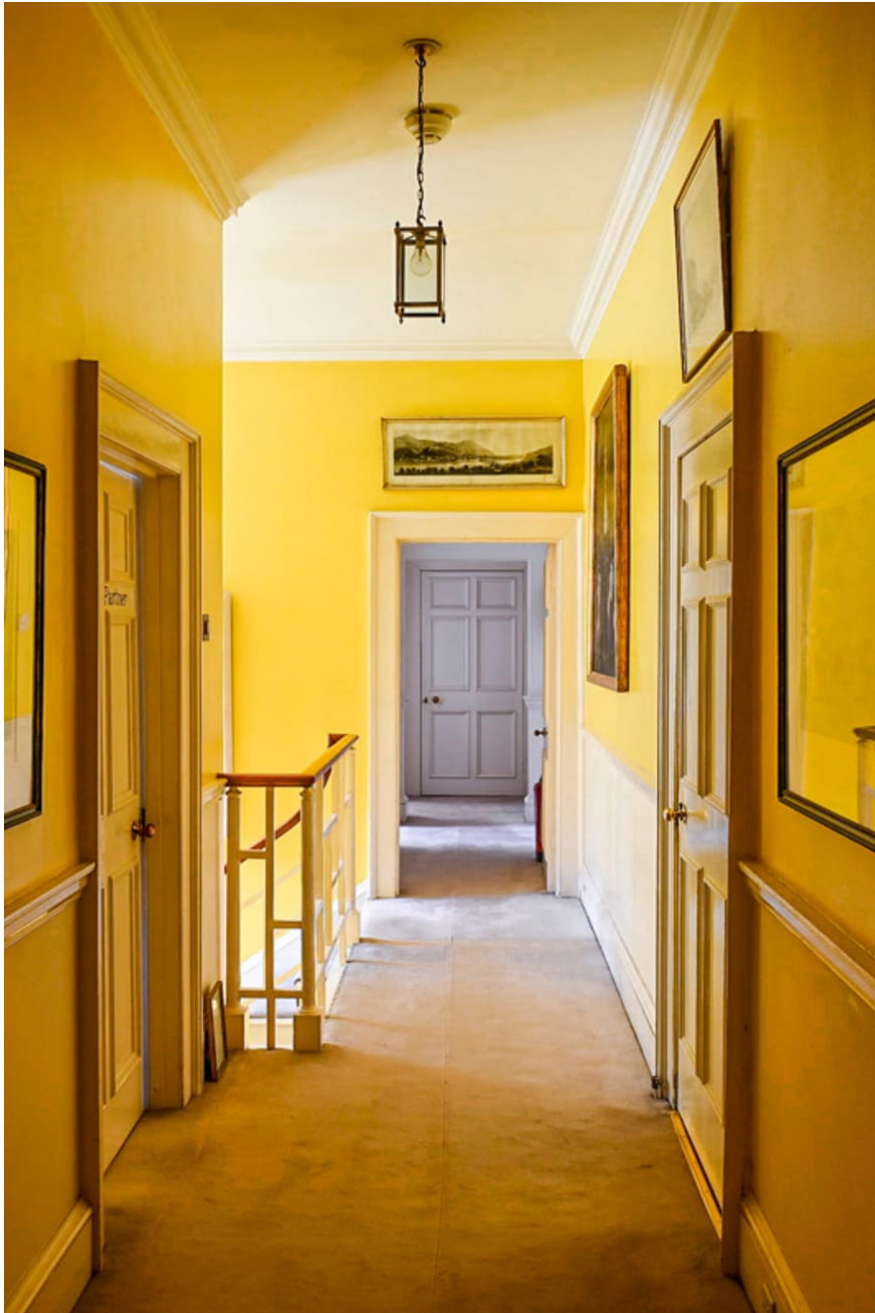
Greengate Manor - Epsom

Historic estate with elegant Georgian house only 18 miles from central London. The property provides complete privacy, is valued on all sides with a haka and stone balustrade facing east allowing wonderful views over paddocks and horses, trees and over 3 acres of immaculate lawns and woods. The main house has four bedrooms, two bathrooms, an exceptional, marble-floored entrance hall with octagonal drawing room (original mid 1700's marble fireplace and cornice) dining room and library leading from it. There is a south-facing terrace with doors from the dining room and library. A bright picture-hung corridor leads to the kitchen and back

CAROL HAYES
MANAGEMENT

020 7482 1555

www.carolhayesmanagement.co.uk



Greengate Manor - Epsom

Historic estate with elegant Georgian house only 18 miles from central London. The property provides complete privacy, is valued on all sides with a haka and stone balustrade facing east allowing wonderful views over paddocks and horses, trees and over 3 acres of immaculate lawns and woods. The main house has four bedrooms, two bathrooms, an exceptional, marble-floored entrance hall with octagonal drawing room (original mid 1700's marble fireplace and cornice) dining room and library leading from it. There is a south-facing terrace with doors from the dining room and library. A bright picture-hung corridor leads to the kitchen and back

CAROL HAYES
MANAGEMENT

020 7482 1555

www.carolhayesmanagement.co.uk



Greengate Manor - Epsom

Historic estate with elegant Georgian house only 18 miles from central London. The property provides complete privacy, is valued on all sides with a hoha and stone balustrade facing east allowing wonderful views over paddocks and horses, trees and over 3 acres of immaculate lawns and woods. The main house has four bedrooms, two bathrooms, an exceptional, marble-floored entrance hall with octagonal drawing room (original mid 1700's marble fireplace and cornice) dining room and library leading from it. There is a south-facing terrace with doors from the dining room and library. A bright picture-hung corridor leads to the kitchen and back

CAROL HAYES
MANAGEMENT

020 7482 1555

www.carolhayesmanagement.co.uk



Greengate Manor - Epsom

Historic estate with elegant Georgian house only 18 miles from central London. The property provides complete privacy, is walled on all sides with a haka and stone balustrade facing east allowing wonderful views over paddocks and horses, trees and over 3 acres of immaculate lawns and woods. The main house has four bedrooms, two bathrooms, an exceptional, marble-floored entrance hall with octagonal drawing room (original mid 1700's marble fireplace and cornice) dining room and library leading from it. There is a south-facing terrace with doors from the dining room and library. A bright picture-hung corridor leads to the kitchen and back

CAROL HAYES
MANAGEMENT

020 7482 1555

www.carolhayesmanagement.co.uk



Greengate Manor - Epsom

Historic estate with elegant Georgian house only 18 miles from central London. The property provides complete privacy, is walled on all sides with a haka and stone balustrade facing east allowing wonderful views over paddocks and horses, trees and over 3 acres of immaculate lawns and woods. The main house has four bedrooms, two bathrooms, an exceptional, marble-floored entrance hall with octagonal drawing room (original mid 1700's marble fireplace and cornice) dining room and library leading from it. There is a south-facing terrace with doors from the dining room and library. A bright picture-hung corridor leads to the kitchen and back

CAROL HAYES
MANAGEMENT

020 7482 1555

www.carolhayesmanagement.co.uk



Greengate Manor - Epsom

Historic estate with elegant Georgian house only 18 miles from central London. The property provides complete privacy, is valued on all sides with a haka and stone balustrade facing east allowing wonderful views over paddocks and horses, trees and over 3 acres of immaculate lawns and woods. The main house has four bedrooms, two bathrooms, an exceptional, marble-floored entrance hall with octagonal drawing room (original mid 1700's marble fireplace and cornice) dining room and library leading from it. There is a south-facing terrace with doors from the dining room and library. A bright picture-hung corridor leads to the kitchen and back

CAROL HAYES
MANAGEMENT

020 7482 1555

www.carolhayesmanagement.co.uk



Greengate Manor - Epsom

Historic estate with elegant Georgian house only 18 miles from central London. The property provides complete privacy, is walled on all sides with a haka and stone balustrade facing east allowing wonderful views over paddocks and horses, trees and over 3 acres of immaculate lawns and woods. The main house has four bedrooms, two bathrooms, an exceptional, marble-floored entrance hall with octagonal drawing room (original mid 1700's marble fireplace and cornice) dining room and library leading from it. There is a south-facing terrace with doors from the dining room and library. A bright picture-hung corridor leads to the kitchen and back

CAROL HAYES
MANAGEMENT

020 7482 1555

www.carolhayesmanagement.co.uk



Greengate Manor - Epsom

Historic estate with elegant Georgian house only 18 miles from central London. The property provides complete privacy, is valued on all sides with a haka and stone balustrade facing east allowing wonderful views over paddocks and horses, trees and over 3 acres of immaculate lawns and woods. The main house has four bedrooms, two bathrooms, an exceptional, marble-floored entrance hall with octagonal drawing room (original mid 1700's marble fireplace and cornice) dining room and library leading from it. There is a south-facing terrace with doors from the dining room and library. A bright picture-hung corridor leads to the kitchen and back

CAROL HAYES
MANAGEMENT

020 7482 1555

www.carolhayesmanagement.co.uk



Greengate Manor - Epsom

Historic estate with elegant Georgian house only 18 miles from central London. The property provides complete privacy, is valued on all sides with a haka and stone balustrade facing east allowing wonderful views over paddocks and horses, trees and over 3 acres of immaculate lawns and woods. The main house has four bedrooms, two bathrooms, an exceptional, marble-floored entrance hall with octagonal drawing room (original mid 1700's marble fireplace and cornice) dining room and library leading from it. There is a south-facing terrace with doors from the dining room and library. A bright picture-hung corridor leads to the kitchen and back

CAROL HAYES
MANAGEMENT

020 7482 1555

www.carolhayesmanagement.co.uk



Greengate Manor - Epsom

Historic estate with elegant Georgian house only 18 miles from central London. The property provides complete privacy, is walled on all sides with a haka and stone balustrade facing east allowing wonderful views over paddocks and horses, trees and over 3 acres of immaculate lawns and woods. The main house has four bedrooms, two bathrooms, an exceptional, marble-floored entrance hall with octagonal drawing room (original mid 1700's marble fireplace and cornice) dining room and library leading from it. There is a south-facing terrace with doors from the dining room and library. A bright picture-hung corridor leads to the kitchen and back

CAROL HAYES
MANAGEMENT

020 7482 1555

www.carolhayesmanagement.co.uk



Greengate Manor - Epsom

Historic estate with elegant Georgian house only 18 miles from central London. The property provides complete privacy, is valued on all sides with a haha and stone balustrade facing east allowing wonderful views over paddocks and horses, trees and over 3 acres of immaculate lawns and woods. The main house has four bedrooms, two bathrooms, an exceptional, marble-floored entrance hall with octagonal drawing room (original mid 1700's marble fireplace and cornice) dining room and library leading from it. There is a south-facing terrace with doors from the dining room and library. A bright picture-hung corridor leads to the kitchen and back

CAROL HAYES
MANAGEMENT

020 7482 1555

www.carolhayesmanagement.co.uk



Greengate Manor - Epsom

Historic estate with elegant Georgian house only 18 miles from central London. The property provides complete privacy, is valued on all sides with a haka and stone balustrade facing east allowing wonderful views over paddocks and horses, trees and over 3 acres of immaculate lawns and woods. The main house has four bedrooms, two bathrooms, an exceptional, marble-floored entrance hall with octagonal drawing room (original mid 1700's marble fireplace and cornice) dining room and library leading from it. There is a south-facing terrace with doors from the dining room and library. A bright picture-hung corridor leads to the kitchen and back

CAROL HAYES
MANAGEMENT

020 7482 1555

www.carolhayesmanagement.co.uk



Greengate Manor - Epsom

Historic estate with elegant Georgian house only 18 miles from central London. The property provides complete privacy, is walled on all sides with a haka and stone balustrade facing east allowing wonderful views over paddocks and horses, trees and over 3 acres of immaculate lawns and woods. The main house has four bedrooms, two bathrooms, an exceptional, marble-floored entrance hall with octagonal drawing room (original mid 1700's marble fireplace and cornice) dining room and library leading from it. There is a south-facing terrace with doors from the dining room and library. A bright picture-hung corridor leads to the kitchen and back

CAROL HAYES
MANAGEMENT

020 7482 1555

www.carolhayesmanagement.co.uk



Greengate Manor - Epsom

Historic estate with elegant Georgian house only 18 miles from central London. The property provides complete privacy, is walled on all sides with a haka and stone balustrade facing east allowing wonderful views over paddocks and horses, trees and over 3 acres of immaculate lawns and woods. The main house has four bedrooms, two bathrooms, an exceptional, marble-floored entrance hall with octagonal drawing room (original mid 1700's marble fireplace and cornice) dining room and library leading from it. There is a south-facing terrace with doors from the dining room and library. A bright picture-hung corridor leads to the kitchen and back

CAROL HAYES
MANAGEMENT

020 7482 1555

www.carolhayesmanagement.co.uk



Greengate Manor - Epsom

Historic estate with elegant Georgian house only 18 miles from central London. The property provides complete privacy, is valued on all sides with a haka and stone balustrade facing east allowing wonderful views over paddocks and horses, trees and over 3 acres of immaculate lawns and woods. The main house has four bedrooms, two bathrooms, an exceptional, marble-floored entrance hall with octagonal drawing room (original mid 1700's marble fireplace and cornice) dining room and library leading from it. There is a south-facing terrace with doors from the dining room and library. A bright picture-hung corridor leads to the kitchen and back

CAROL HAYES
MANAGEMENT

020 7482 1555

www.carolhayesmanagement.co.uk



Greengate Manor - Epsom

Historic estate with elegant Georgian house only 18 miles from central London. The property provides complete privacy, is walled on all sides with a haka and stone balustrade facing east allowing wonderful views over paddocks and horses, trees and over 3 acres of immaculate lawns and woods. The main house has four bedrooms, two bathrooms, an exceptional, marble-floored entrance hall with octagonal drawing room (original mid 1700's marble fireplace and cornice) dining room and library leading from it. There is a south-facing terrace with doors from the dining room and library. A bright picture-hung corridor leads to the kitchen and back

CAROL HAYES
MANAGEMENT

020 7482 1555

www.carolhayesmanagement.co.uk



Greengate Manor - Epsom

Historic estate with elegant Georgian house only 18 miles from central London. The property provides complete privacy, is walled on all sides with a hoha and stone balustrade facing east allowing wonderful views over paddocks and horses, trees and over 3 acres of immaculate lawns and woods. The main house has four bedrooms, two bathrooms, an exceptional, marble-floored entrance hall with octagonal drawing room (original mid 1700's marble fireplace and cornice) dining room and library leading from it. There is a south-facing terrace with doors from the dining room and library. A bright picture-hung corridor leads to the kitchen and back

CAROL HAYES
MANAGEMENT

020 7482 1555

www.carolhayesmanagement.co.uk



Greengate Manor - Epsom

Historic estate with elegant Georgian house only 18 miles from central London. The property provides complete privacy, is valued on all sides with a hoha and stone balustrade facing east allowing wonderful views over paddocks and horses, trees and over 3 acres of immaculate lawns and woods. The main house has four bedrooms, two bathrooms, an exceptional, marble-floored entrance hall with octagonal drawing room (original mid 1700's marble fireplace and cornice) dining room and library leading from it. There is a south-facing terrace with doors from the dining room and library. A bright picture-hung corridor leads to the kitchen and back

CAROL HAYES
MANAGEMENT

020 7482 1555

www.carolhayesmanagement.co.uk



Greengate Manor - Epsom

Historic estate with elegant Georgian house only 18 miles from central London. The property provides complete privacy, is walled on all sides with a haka and stone balustrade facing east allowing wonderful views over paddocks and horses, trees and over 3 acres of immaculate lawns and woods. The main house has four bedrooms, two bathrooms, an exceptional, marble-floored entrance hall with octagonal drawing room (original mid 1700's marble fireplace and cornice) dining room and library leading from it. There is a south-facing terrace with doors from the dining room and library. A bright picture-hung corridor leads to the kitchen and back

CAROL HAYES
MANAGEMENT

020 7482 1555

www.carolhayesmanagement.co.uk



Greengate Manor - Epsom

Historic estate with elegant Georgian house only 18 miles from central London. The property provides complete privacy, is valued on all sides with a haka and stone balustrade facing east allowing wonderful views over paddocks and horses, trees and over 3 acres of immaculate lawns and woods. The main house has four bedrooms, two bathrooms, an exceptional, marble-floored entrance hall with octagonal drawing room (original mid 1700's marble fireplace and cornice) dining room and library leading from it. There is a south-facing terrace with doors from the dining room and library. A bright picture-hung corridor leads to the kitchen and back

CAROL HAYES
MANAGEMENT

020 7482 1555

www.carolhayesmanagement.co.uk



Greengate Manor - Epsom

Historic estate with elegant Georgian house only 18 miles from central London. The property provides complete privacy, is walled on all sides with a haka and stone balustrade facing east allowing wonderful views over paddocks and horses, trees and over 3 acres of immaculate lawns and woods. The main house has four bedrooms, two bathrooms, an exceptional, marble-floored entrance hall with octagonal drawing room (original mid 1700's marble fireplace and cornice) dining room and library leading from it. There is a south-facing terrace with doors from the dining room and library. A bright picture-hung corridor leads to the kitchen and back

CAROL HAYES
MANAGEMENT

020 7482 1555

www.carolhayesmanagement.co.uk



Greengate Manor - Epsom

Historic estate with elegant Georgian house only 18 miles from central London. The property provides complete privacy, is valued on all sides with a hoha and stone balustrade facing east allowing wonderful views over paddocks and horses, trees and over 3 acres of immaculate lawns and woods. The main house has four bedrooms, two bathrooms, an exceptional, marble-floored entrance hall with octagonal drawing room (original mid 1700's marble fireplace and cornice) dining room and library leading from it. There is a south-facing terrace with doors from the dining room and library. A bright picture-hung corridor leads to the kitchen and back

CAROL HAYES
MANAGEMENT

020 7482 1555

www.carolhayesmanagement.co.uk



Greengate Manor - Epsom

Historic estate with elegant Georgian house only 18 miles from central London. The property provides complete privacy, is valued on all sides with a haka and stone balustrade facing east allowing wonderful views over paddocks and horses, trees and over 3 acres of immaculate lawns and woods. The main house has four bedrooms, two bathrooms, an exceptional, marble-floored entrance hall with octagonal drawing room (original mid 1700's marble fireplace and cornice) dining room and library leading from it. There is a south-facing terrace with doors from the dining room and library. A bright picture-hung corridor leads to the kitchen and back

CAROL HAYES
MANAGEMENT

020 7482 1555

www.carolhayesmanagement.co.uk



Greengate Manor - Epsom

Historic estate with elegant Georgian house only 18 miles from central London. The property provides complete privacy, is walled on all sides with a haka and stone balustrade facing east allowing wonderful views over paddocks and horses, trees and over 3 acres of immaculate lawns and woods. The main house has four bedrooms, two bathrooms, an exceptional, marble-floored entrance hall with octagonal drawing room (original mid 1700's marble fireplace and cornice) dining room and library leading from it. There is a south-facing terrace with doors from the dining room and library. A bright picture-hung corridor leads to the kitchen and back

CAROL HAYES
MANAGEMENT

020 7482 1555

www.carolhayesmanagement.co.uk



Greengate Manor - Epsom

Historic estate with elegant Georgian house only 18 miles from central London. The property provides complete privacy, is valued on all sides with a haka and stone balustrade facing east allowing wonderful views over paddocks and horses, trees and over 3 acres of immaculate lawns and woods. The main house has four bedrooms, two bathrooms, an exceptional, marble-floored entrance hall with octagonal drawing room (original mid 1700's marble fireplace and cornice) dining room and library leading from it. There is a south-facing terrace with doors from the dining room and library. A bright picture-hung corridor leads to the kitchen and back

CAROL HAYES
MANAGEMENT

020 7482 1555

www.carolhayesmanagement.co.uk



Greengate Manor - Epsom

Historic estate with elegant Georgian house only 18 miles from central London. The property provides complete privacy, is walled on all sides with a haka and stone balustrade facing east allowing wonderful views over paddocks and horses, trees and over 3 acres of immaculate lawns and woods. The main house has four bedrooms, two bathrooms, an exceptional, marble-floored entrance hall with octagonal drawing room (original mid 1700's marble fireplace and cornice) dining room and library leading from it. There is a south-facing terrace with doors from the dining room and library. A bright picture-hung corridor leads to the kitchen and back

CAROL HAYES
MANAGEMENT

020 7482 1555

www.carolhayesmanagement.co.uk



Greengate Manor - Epsom

Historic estate with elegant Georgian house only 18 miles from central London. The property provides complete privacy, is walled on all sides with a hoha and stone balustrade facing east allowing wonderful views over paddocks and horses, trees and over 3 acres of immaculate lawns and woods. The main house has four bedrooms, two bathrooms, an exceptional, marble-floored entrance hall with octagonal drawing room (original mid 1700's marble fireplace and cornice) dining room and library leading from it. There is a south-facing terrace with doors from the dining room and library. A bright picture-hung corridor leads to the kitchen and back

CAROL HAYES
MANAGEMENT

020 7482 1555

www.carolhayesmanagement.co.uk



Greengate Manor - Epsom

Historic estate with elegant Georgian house only 18 miles from central London. The property provides complete privacy, is valued on all sides with a haha and stone balustrade facing east allowing wonderful views over paddocks and horses, trees and over 3 acres of immaculate lawns and woods. The main house has four bedrooms, two bathrooms, an exceptional, marble-floored entrance hall with octagonal drawing room (original mid 1700's marble fireplace and cornice) dining room and library leading from it. There is a south-facing terrace with doors from the dining room and library. A bright picture-hung corridor leads to the kitchen and back

CAROL HAYES
MANAGEMENT

020 7482 1555

www.carolhayesmanagement.co.uk