

De Beauvoir Noir N1

There are so many visual treats all over this house, which is essentially a cube, clad in stained black cedar - a single slot window at the front is all that indicates this is actually a house. This is a photographer's dream house in more ways than one. In this beautiful sanctuary there is soft artificial lighting and clever techniques used to draw in natural daylight such as the triple-height well inside the front entrance. Thick double doors and hemp insulated walls make this a quiet place to shoot dialogue and it also features a large double door hatch to load in furniture and heavy equipment. Upstairs in the main living room a large single-pane picture window overlooks the Rubina, Oak, Maple and Birch trees. Outdoors, recessed up-lighting along the top of the fence washes light through the surrounding foliage creating a green glow that encloses and increases the contrast of the building. Owned by a photographer, there has been particular consideration of aspects of the house in order to make the best of the sunlight to journey around the building through the day. One is caught on the opaque bedroom window: the light warms the front in the morning: fills the rear



020 7482 1555

www.carolhayesmanagement.co.uk



De Beauvoir Noir N1

There are so many visual treats all over this house, which is essentially a cube, clad in stained black cedar - a single picture window at the front is all that indicates this is actually a house. This is a photographer's dream house in more ways than one. In this beautiful sanctuary there is soft artificial lighting and clever techniques used to draw in natural daylight such as the triple-height well inside the front entrance. Thick double doors and hemp insulated walls make this a quiet place to shoot dialogue and it also features a large double door hatch to load in furniture and heavy equipment. Upstairs in the main living room a large single-pane picture window

CAROL HAYES
MANAGEMENT

020 7482 1555

www.carolhayesmanagement.co.uk



De Beauvoir Noir N1

There are so many visual treats all over this house, which is essentially a cube, clad in stained black cedar - a single flat window at the front is all that indicates this is actually a house. This is a photographer's dream house in more ways than one. In this beautiful sanctuary there is soft artificial lighting and clever techniques used to draw in natural daylight such as the triple-height well inside the front entrance. Thick double doors and hemp insulated walls make this a quiet place to shoot dialogue and it also features a large double door hatch to load in furniture and heavy equipment. Upstairs in the main living room a large single-pane picture window

CAROL HAYES
MANAGEMENT

020 7482 1555

www.carolhayesmanagement.co.uk



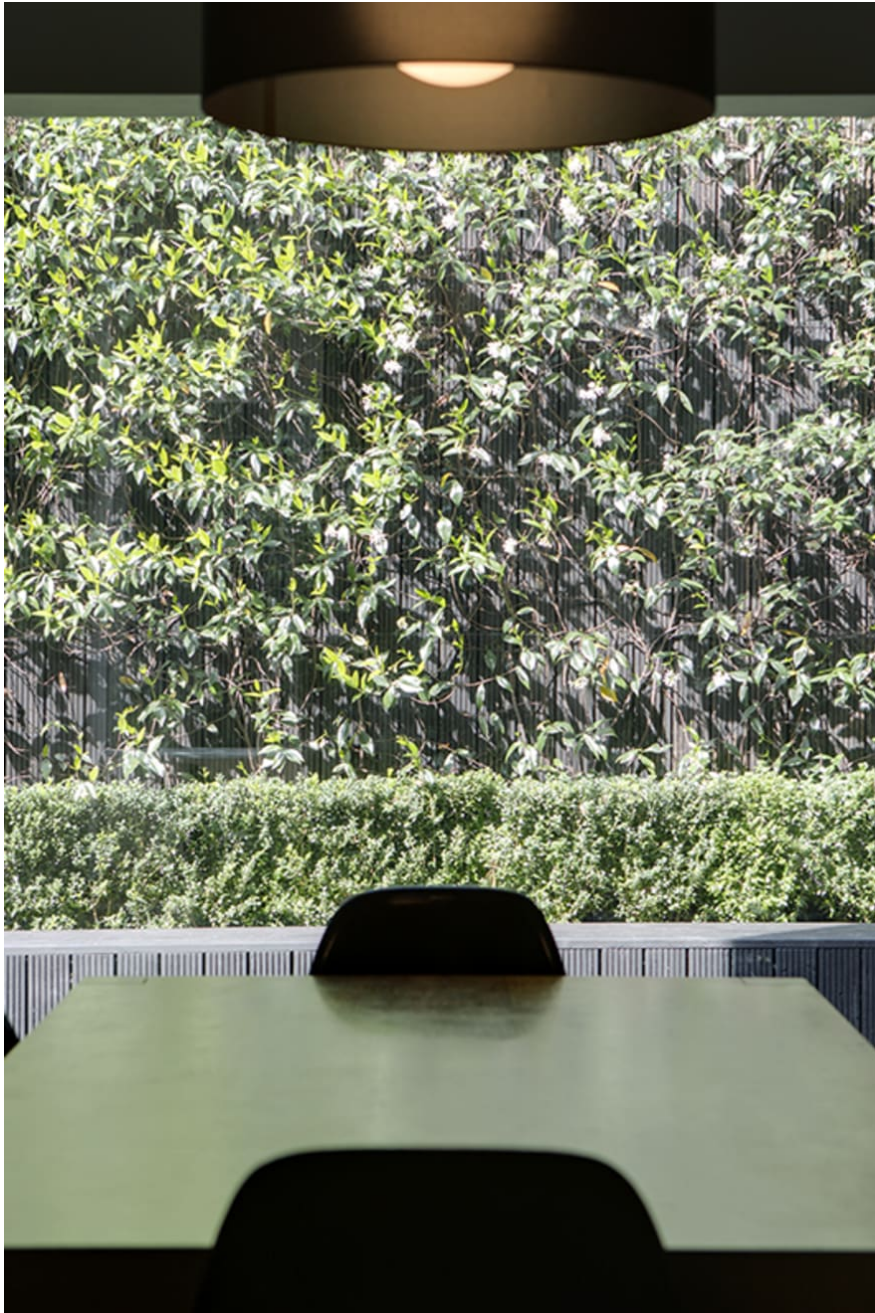
De Beauvoir Noir N1

There are so many visual treats all over this house, which is essentially a cube, clad in stained black cedar - a single floor window at the front is all that indicates this is actually a house. This is a photographer's dream house in more ways than one. In this beautiful sanctuary there is soft artificial lighting and clever techniques used to draw in natural daylight such as the triple-height well inside the front entrance. Thick double doors and hemp insulated walls make this a quiet place to shoot dialogue and it also features a large double door hatch to load in furniture and heavy equipment. Upstairs in the main living room a large single-pane picture window

CAROL HAYES
MANAGEMENT

020 7482 1555

www.carolhayesmanagement.co.uk



De Beauvoir Noir N1

There are so many visual treats all over this house, which is essentially a cube, clad in stained black cedar - a single flat window at the front is all that indicates this is actually a house. This is a photographer's dream house in more ways than one. In this beautiful sanctuary there is soft artificial lighting and clever techniques used to draw in natural daylight such as the triple-height well inside the front entrance. Thick double doors and hemp insulated walls make this a quiet place to shoot dialogue and it also features a large double door hatch to load in furniture and heavy equipment. Upstairs in the main living room a large single-pane picture window

CAROL HAYES
MANAGEMENT

020 7482 1555

www.carolhayesmanagement.co.uk



De Beauvoir Noir N1

There are so many visual treats all over this house, which is essentially a cube, clad in stained black cedar - a single flat window at the front is all that indicates this is actually a house. This is a photographer's dream house in more ways than one. In this beautiful sanctuary there is soft artificial lighting and clever techniques used to draw in natural daylight such as the triple-height well inside the front entrance. Thick double doors and hemp insulated walls make this a quiet place to shoot dialogue and it also features a large double door hatch to load in furniture and heavy equipment. Upstairs in the main living room a large single-pane picture window

CAROL HAYES
MANAGEMENT

020 7482 1555

www.carolhayesmanagement.co.uk



De Beauvoir Noir N1

There are so many visual treats all over this house, which is essentially a cube, clad in stained black cedar - a single picture window at the front is all that indicates this is actually a house. This is a photographer's dream house in more ways than one. In this beautiful sanctuary there is soft artificial lighting and clever techniques used to draw in natural daylight such as the triple-height well inside the front entrance. Thick double doors and hemp insulated walls make this a quiet place to shoot dialogue and it also features a large double door hatch to load in furniture and heavy equipment. Upstairs in the main living room a large single-pane picture window

CAROL HAYES
MANAGEMENT

020 7482 1555

www.carolhayesmanagement.co.uk



De Beauvoir Noir N1

There are so many visual treats all over this house, which is essentially a cube, clad in stained black cedar - a single picture window at the front is all that indicates this is actually a house. This is a photographer's dream house in more ways than one. In this beautiful sanctuary there is soft artificial lighting and clever techniques used to draw in natural daylight such as the triple-height well inside the front entrance. Thick double doors and hemp insulated walls make this a quiet place to shoot dialogue and it also features a large double door hatch to load in furniture and heavy equipment. Upstairs in the main living room a large single-pane picture window

CAROL HAYES
MANAGEMENT

020 7482 1555

www.carolhayesmanagement.co.uk



De Beauvoir Noir N1

There are so many visual treats all over this house, which is essentially a cube, clad in stained black cedar - a single picture window at the front is all that indicates this is actually a house. This is a photographer's dream house in more ways than one. In this beautiful sanctuary there is soft artificial lighting and clever techniques used to draw in natural daylight such as the triple-height well inside the front entrance. Thick double doors and hemp insulated walls make this a quiet place to shoot dialogue and it also features a large double door hatch to load in furniture and heavy equipment. Upstairs in the main living room a large single-pane picture window

CAROL HAYES
MANAGEMENT

020 7482 1555

www.carolhayesmanagement.co.uk



De Beauvoir Noir N1

There are so many visual treats all over this house, which is essentially a cube, clad in stained black cedar - a single flat window at the front is all that indicates this is actually a house. This is a photographer's dream house in more ways than one. In this beautiful sanctuary there is soft artificial lighting and clever techniques used to draw in natural daylight such as the triple-height well inside the front entrance. Thick double doors and hemp insulated walls make this a quiet place to shoot dialogue and it also features a large double door hatch to load in furniture and heavy equipment. Upstairs in the main living room a large single-pane picture window

CAROL HAYES
MANAGEMENT

020 7482 1555

www.carolhayesmanagement.co.uk



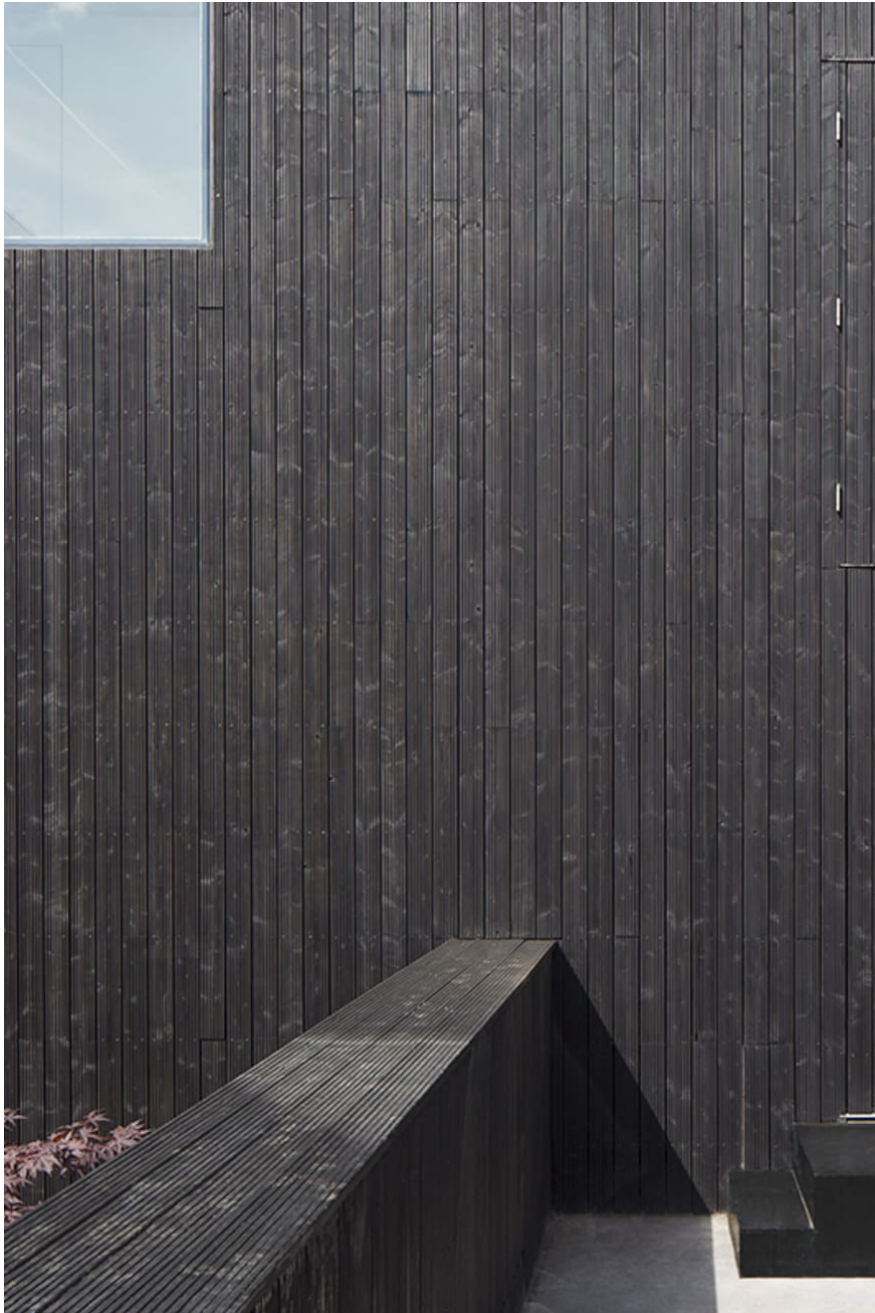
De Beauvoir Noir N1

There are so many visual treats all over this house, which is essentially a cube, clad in stained black cedar - a single flat window at the front is all that indicates this is actually a house. This is a photographer's dream house in more ways than one. In this beautiful sanctuary there is soft artificial lighting and clever techniques used to draw in natural daylight such as the triple-height well inside the front entrance. Thick double doors and hemp insulated walls make this a quiet place to shoot dialogue and it also features a large double door hatch to load in furniture and heavy equipment. Upstairs in the main living room a large single-pane picture window

CAROL HAYES
MANAGEMENT

020 7482 1555

www.carolhayesmanagement.co.uk



De Beauvoir Noir N1

There are so many visual treats all over this house, which is essentially a cube, clad in stained black cedar - a single picture window at the front is all that indicates this is actually a house. This is a photographer's dream house in more ways than one. In this beautiful sanctuary there is soft artificial lighting and clever techniques used to draw in natural daylight such as the triple-height well inside the front entrance. Thick double doors and hemp insulated walls make this a quiet place to shoot dialogue and it also features a large double door hatch to load in furniture and heavy equipment. Upstairs in the main living room a large single-pane picture window

CAROL HAYES
MANAGEMENT

020 7482 1555

www.carolhayesmanagement.co.uk



De Beauvoir Noir N1

There are so many visual treats all over this house, which is essentially a cube, clad in stained black cedar - a single floor window at the front is all that indicates this is actually a house. This is a photographer's dream house in more ways than one. In this beautiful sanctuary there is soft artificial lighting and clever techniques used to draw in natural daylight such as the triple-height well inside the front entrance. Thick double doors and hemp insulated walls make this a quiet place to shoot dialogue and it also features a large double door hatch to load in furniture and heavy equipment. Upstairs in the main living room a large single-pane picture window

CAROL HAYES
MANAGEMENT

020 7482 1555

www.carolhayesmanagement.co.uk



De Beauvoir Noir N1

There are so many visual treats all over this house, which is essentially a cube, clad in stained black cedar - a single picture window at the front is all that indicates this is actually a house. This is a photographer's dream house in more ways than one. In this beautiful sanctuary there is soft artificial lighting and clever techniques used to draw in natural daylight such as the triple-height well inside the front entrance. Thick double doors and hemp insulated walls make this a quiet place to shoot dialogue and it also features a large double door hatch to load in furniture and heavy equipment. Upstairs in the main living room a large single-pane picture window

CAROL HAYES
MANAGEMENT

020 7482 1555

www.carolhayesmanagement.co.uk



De Beauvoir Noir N1

There are so many visual treats all over this house, which is essentially a cube, clad in stained black cedar - a single floor window at the front is all that indicates this is actually a house. This is a photographer's dream house in more ways than one. In this beautiful sanctuary there is soft artificial lighting and clever techniques used to draw in natural daylight such as the triple-height well inside the front entrance. Thick double doors and hemp insulated walls make this a quiet place to shoot dialogue and it also features a large double door hatch to load in furniture and heavy equipment. Upstairs in the main living room a large single-pane picture window

CAROL HAYES
MANAGEMENT

020 7482 1555

www.carolhayesmanagement.co.uk



De Beauvoir Noir N1

There are so many visual treats all over this house, which is essentially a cube, clad in stained black cedar - a single flat window at the front is all that indicates this is actually a house. This is a photographer's dream house in more ways than one. In this beautiful sanctuary there is soft artificial lighting and clever techniques used to draw in natural daylight such as the triple-height well inside the front entrance. Thick double doors and hemp insulated walls make this a quiet place to shoot dialogue and it also features a large double door hatch to load in furniture and heavy equipment. Upstairs in the main living room a large single-pane picture window

CAROL HAYES
MANAGEMENT

020 7482 1555

www.carolhayesmanagement.co.uk



De Beauvoir Noir N1

There are so many visual treats all over this house, which is essentially a cube, clad in stained black cedar - a single floor window at the front is all that indicates this is actually a house. This is a photographer's dream house in more ways than one. In this beautiful sanctuary there is soft artificial lighting and clever techniques used to draw in natural daylight such as the triple-height well inside the front entrance. Thick double doors and hemp insulated walls make this a quiet place to shoot dialogue and it also features a large double door hatch to load in furniture and heavy equipment. Upstairs in the main living room a large single-pane picture window

CAROL HAYES
MANAGEMENT

020 7482 1555

www.carolhayesmanagement.co.uk



De Beauvoir Noir N1

There are so many visual treats all over this house, which is essentially a cube, clad in stained black cedar - a single flat window at the front is all that indicates this is actually a house. This is a photographer's dream house in more ways than one. In this beautiful sanctuary there is soft artificial lighting and clever techniques used to draw in natural daylight such as the triple-height well inside the front entrance. Thick double doors and hemp insulated walls make this a quiet place to shoot dialogue and it also features a large double door hatch to load in furniture and heavy equipment. Upstairs in the main living room a large single-pane picture window

CAROL HAYES
MANAGEMENT

020 7482 1555

www.carolhayesmanagement.co.uk



De Beauvoir Noir N1

There are so many visual treats all over this house, which is essentially a cube, clad in stained black cedar - a single flat window at the front is all that indicates this is actually a house. This is a photographer's dream house in more ways than one. In this beautiful sanctuary there is soft artificial lighting and clever techniques used to draw in natural daylight such as the triple-height well inside the front entrance. Thick double doors and hemp insulated walls make this a quiet place to shoot dialogue and it also features a large double door hatch to load in furniture and heavy equipment. Upstairs in the main living room a large single-pane picture window

**CAROL HAYES
MANAGEMENT**

020 7482 1555

www.carolhayesmanagement.co.uk



De Beauvoir Noir N1

There are so many visual treats all over this house, which is essentially a cube, clad in stained black cedar - a single flat window at the front is all that indicates this is actually a house. This is a photographer's dream house in more ways than one. In this beautiful sanctuary there is soft artificial lighting and clever techniques used to draw in natural daylight such as the triple-height well inside the front entrance. Thick double doors and hemp insulated walls make this a quiet place to shoot dialogue and it also features a large double door hatch to load in furniture and heavy equipment. Upstairs in the main living room a large single-pane picture window

CAROL HAYES
MANAGEMENT

020 7482 1555

www.carolhayesmanagement.co.uk



De Beauvoir Noir N1

There are so many visual treats all over this house, which is essentially a cube, clad in stained black cedar - a single flat window at the front is all that indicates this is actually a house. This is a photographer's dream house in more ways than one. In this beautiful sanctuary there is soft artificial lighting and clever techniques used to draw in natural daylight such as the triple-height well inside the front entrance. Thick double doors and hemp insulated walls make this a quiet place to shoot dialogue and it also features a large double door hatch to load in furniture and heavy equipment. Upstairs in the main living room a large single-pane picture window

CAROL HAYES
MANAGEMENT

020 7482 1555

www.carolhayesmanagement.co.uk



De Beauvoir Noir N1

There are so many visual treats all over this house, which is essentially a cube, clad in stained black cedar - a single floor window at the front is all that indicates this is actually a house. This is a photographer's dream house in more ways than one. In this beautiful sanctuary there is soft artificial lighting and clever techniques used to draw in natural daylight such as the triple-height well inside the front entrance. Thick double doors and hemp insulated walls make this a quiet place to shoot dialogue and it also features a large double door hatch to load in furniture and heavy equipment. Upstairs in the main living room a large single-pane picture window

CAROL HAYES
MANAGEMENT

020 7482 1555

www.carolhayesmanagement.co.uk



De Beauvoir Noir N1

There are so many visual treats all over this house, which is essentially a cube, clad in stained black cedar - a single floor window at the front is all that indicates this is actually a house. This is a photographer's dream house in more ways than one. In this beautiful sanctuary there is soft artificial lighting and clever techniques used to draw in natural daylight such as the triple-height well inside the front entrance. Thick double doors and hemp insulated walls make this a quiet place to shoot dialogue and it also features a large double door hatch to load in furniture and heavy equipment. Upstairs in the main living room a large single-pane picture window

CAROL HAYES
MANAGEMENT

020 7482 1555

www.carolhayesmanagement.co.uk



De Beauvoir Noir N1

There are so many visual treats all over this house, which is essentially a cube, clad in stained black cedar - a single floor window at the front is all that indicates this is actually a house. This is a photographer's dream house in more ways than one. In this beautiful sanctuary there is soft artificial lighting and clever techniques used to draw in natural daylight such as the triple-height well inside the front entrance. Thick double doors and hemp insulated walls make this a quiet place to shoot dialogue and it also features a large double door hatch to load in furniture and heavy equipment. Upstairs in the main living room a large single-pane picture window

CAROL HAYES
MANAGEMENT

020 7482 1555

www.carolhayesmanagement.co.uk



De Beauvoir Noir N1

There are so many visual treats all over this house, which is essentially a cube, clad in stained black cedar - a single floor window at the front is all that indicates this is actually a house. This is a photographer's dream house in more ways than one. In this beautiful sanctuary there is soft artificial lighting and clever techniques used to draw in natural daylight such as the triple-height well inside the front entrance. Thick double doors and hemp insulated walls make this a quiet place to shoot dialogue and it also features a large double door hatch to load in furniture and heavy equipment. Upstairs in the main living room a large single-pane picture window

CAROL HAYES
MANAGEMENT

020 7482 1555

www.carolhayesmanagement.co.uk



De Beauvoir Noir N1

There are so many visual treats all over this house, which is essentially a cube, clad in stained black cedar - a single floor window at the front is all that indicates this is actually a house. This is a photographer's dream house in more ways than one. In this beautiful sanctuary there is soft artificial lighting and clever techniques used to draw in natural daylight such as the triple-height well inside the front entrance. Thick double doors and hemp insulated walls make this a quiet place to shoot dialogue and it also features a large double door hatch to load in furniture and heavy equipment. Upstairs in the main living room a large single-pane picture window

CAROL HAYES
MANAGEMENT

020 7482 1555

www.carolhayesmanagement.co.uk



De Beauvoir Noir N1

There are so many visual treats all over this house, which is essentially a cube, clad in stained black cedar - a single, flat window at the front is all that indicates this is actually a house. This is a photographer's dream house in more ways than one. In this beautiful sanctuary there is soft artificial lighting and clever techniques used to draw in natural daylight such as the triple-height well inside the front entrance. Thick double doors and hemp insulated walls make this a quiet place to shoot dialogue and it also features a large double door hatch to load in furniture and heavy equipment. Upstairs in the main living room a large single-pane picture window

CAROL HAYES
MANAGEMENT

020 7482 1555

www.carolhayesmanagement.co.uk



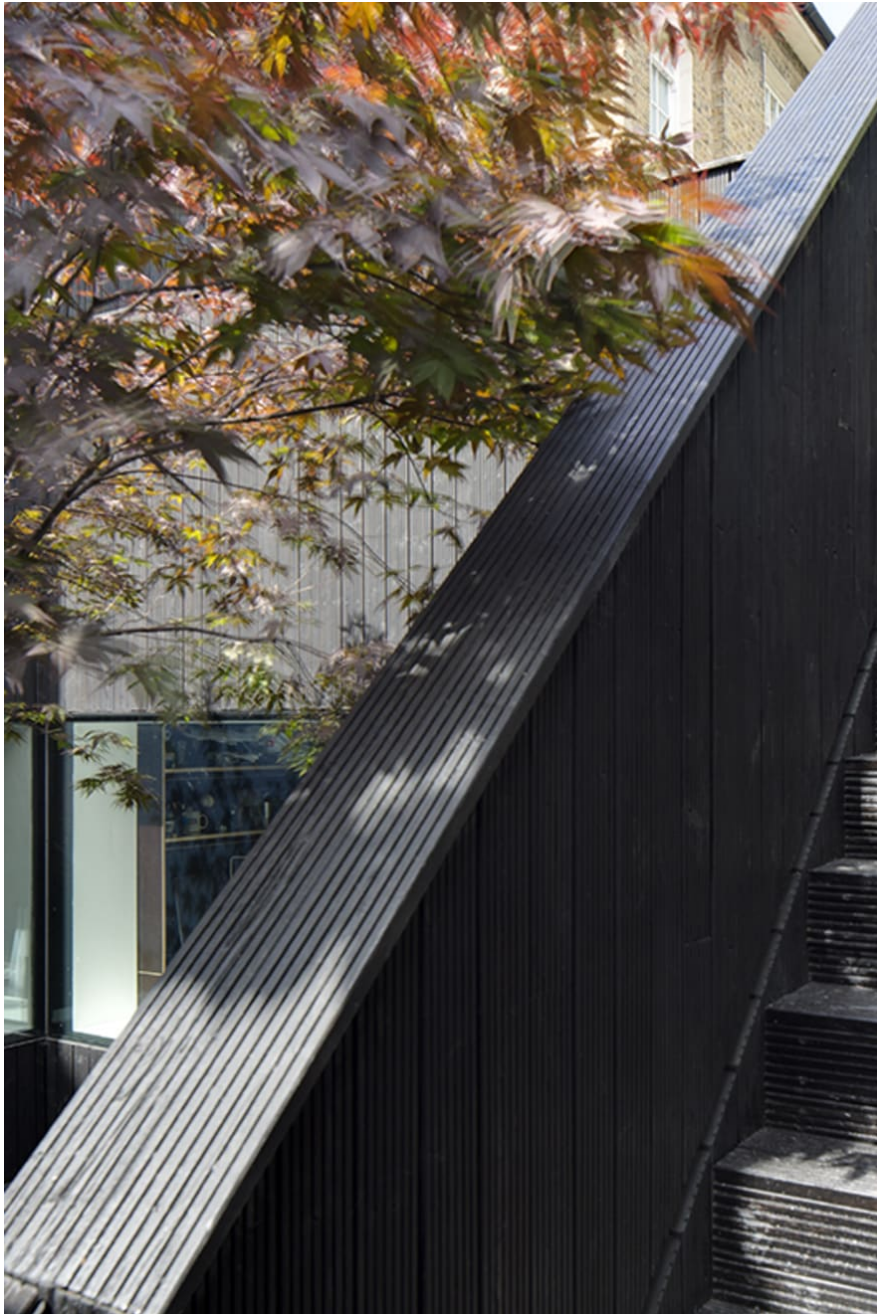
De Beauvoir Noir N1

There are so many visual treats all over this house, which is essentially a cube, clad in stained black cedar - a single picture window at the front is all that indicates this is actually a house. This is a photographer's dream house in more ways than one. In this beautiful sanctuary there is soft artificial lighting and clever techniques used to draw in natural daylight such as the triple-height well inside the front entrance. Thick double doors and hemp insulated walls make this a quiet place to shoot dialogue and it also features a large double door hatch to load in furniture and heavy equipment. Upstairs in the main living room a large single-pane picture window

CAROL HAYES
MANAGEMENT

020 7482 1555

www.carolhayesmanagement.co.uk



De Beauvoir Noir N1

There are so many visual treats all over this house, which is essentially a cube, clad in stained black cedar - a single floor window at the front is all that indicates this is actually a house. This is a photographer's dream house in more ways than one. In this beautiful sanctuary there is soft artificial lighting and clever techniques used to draw in natural daylight such as the triple-height well inside the front entrance. Thick double doors and hemp insulated walls make this a quiet place to shoot dialogue and it also features a large double door hatch to load in furniture and heavy equipment. Upstairs in the main living room a large single-pane picture window

CAROL HAYES
MANAGEMENT

020 7482 1555

www.carolhayesmanagement.co.uk



De Beauvoir Noir N1

There are so many visual treats all over this house, which is essentially a cube, clad in stained black cedar - a single flat window at the front is all that indicates this is actually a house. This is a photographer's dream house in more ways than one. In this beautiful sanctuary there is soft artificial lighting and clever techniques used to draw in natural daylight such as the triple-height well inside the front entrance. Thick double doors and hemp insulated walls make this a quiet place to shoot dialogue and it also features a large double door hatch to load in furniture and heavy equipment. Upstairs in the main living room a large single-pane picture window

CAROL HAYES
MANAGEMENT

020 7482 1555

www.carolhayesmanagement.co.uk



De Beauvoir Noir N1

There are so many visual treats all over this house, which is essentially a cube, clad in stained black cedar - a single floor window at the front is all that indicates this is actually a house. This is a photographer's dream house in more ways than one. In this beautiful sanctuary there is soft artificial lighting and clever techniques used to draw in natural daylight such as the triple-height well inside the front entrance. Thick double doors and hemp insulated walls make this a quiet place to shoot dialogue and it also features a large double door hatch to load in furniture and heavy equipment. Upstairs in the main living room a large single-pane picture window

CAROL HAYES
MANAGEMENT

020 7482 1555

www.carolhayesmanagement.co.uk



De Beauvoir Noir N1

There are so many visual treats all over this house, which is essentially a cube, clad in stained black cedar - a single floor window at the front is all that indicates this is actually a house. This is a photographer's dream house in more ways than one. In this beautiful sanctuary there is soft artificial lighting and clever techniques used to draw in natural daylight such as the triple-height well inside the front entrance. Thick double doors and hemp insulated walls make this a quiet place to shoot dialogue and it also features a large double door hatch to load in furniture and heavy equipment. Upstairs in the main living room a large single-pane picture window

CAROL HAYES
MANAGEMENT

020 7482 1555

www.carolhayesmanagement.co.uk



De Beauvoir Noir N1

There are so many visual treats all over this house, which is essentially a cube, clad in stained black cedar - a single picture window at the front is all that indicates this is actually a house. This is a photographer's dream house in more ways than one. In this beautiful sanctuary there is soft artificial lighting and clever techniques used to draw in natural daylight such as the triple-height well inside the front entrance. Thick double doors and hemp insulated walls make this a quiet place to shoot dialogue and it also features a large double door hatch to load in furniture and heavy equipment. Upstairs in the main living room a large single-pane picture window

CAROL HAYES
MANAGEMENT

020 7482 1555

www.carolhayesmanagement.co.uk



De Beauvoir Noir N1

There are so many visual treats all over this house, which is essentially a cube, clad in stained black cedar - a single floor window at the front is all that indicates this is actually a house. This is a photographer's dream house in more ways than one. In this beautiful sanctuary there is soft artificial lighting and clever techniques used to draw in natural daylight such as the triple-height well inside the front entrance. Thick double doors and hemp insulated walls make this a quiet place to shoot dialogue and it also features a large double door hatch to load in furniture and heavy equipment. Upstairs in the main living room a large single-pane picture window

CAROL HAYES
MANAGEMENT

020 7482 1555

www.carolhayesmanagement.co.uk



De Beauvoir Noir N1

There are so many visual treats all over this house, which is essentially a cube, clad in stained black cedar - a single picture window at the front is all that indicates this is actually a house. This is a photographer's dream house in more ways than one. In this beautiful sanctuary there is soft artificial lighting and clever techniques used to draw in natural daylight such as the triple-height well inside the front entrance. Thick double doors and hemp insulated walls make this a quiet place to shoot dialogue and it also features a large double door hatch to load in furniture and heavy equipment. Upstairs in the main living room a large single-pane picture window

CAROL HAYES
MANAGEMENT

020 7482 1555

www.carolhayesmanagement.co.uk



De Beauvoir Noir N1

There are so many visual treats all over this house, which is essentially a cube, clad in stained black cedar - a single light window at the front is all that indicates this is actually a house. This is a photographer's dream house in more ways than one. In this beautiful sanctuary there is soft artificial lighting and clever techniques used to draw in natural daylight such as the triple-height well inside the front entrance. Thick double doors and hemp insulated walls make this a quiet place to shoot dialogue and it also features a large double door hatch to load in furniture and heavy equipment. Upstairs in the main living room a large single-pane picture window

CAROL HAYES
MANAGEMENT

020 7482 1555

www.carolhayesmanagement.co.uk



De Beauvoir Noir N1

There are so many visual treats all over this house, which is essentially a cube, clad in stained black cedar - a single floor window at the front is all that indicates this is actually a house. This is a photographer's dream house in more ways than one. In this beautiful sanctuary there is soft artificial lighting and clever techniques used to draw in natural daylight such as the triple-height well inside the front entrance. Thick double doors and hemp insulated walls make this a quiet place to shoot dialogue and it also features a large double door hatch to load in furniture and heavy equipment. Upstairs in the main living room a large single-pane picture window

CAROL HAYES
MANAGEMENT

020 7482 1555

www.carolhayesmanagement.co.uk



De Beauvoir Noir N1

There are so many visual treats all over this house, which is essentially a cube, clad in stained black cedar - a single flat window at the front is all that indicates this is actually a house. This is a photographer's dream house in more ways than one. In this beautiful sanctuary there is soft artificial lighting and clever techniques used to draw in natural daylight such as the triple-height well inside the front entrance. Thick double doors and hemp insulated walls make this a quiet place to shoot dialogue and it also features a large double door hatch to load in furniture and heavy equipment. Upstairs in the main living room a large single-pane picture window

CAROL HAYES
MANAGEMENT

020 7482 1555

www.carolhayesmanagement.co.uk



De Beauvoir Noir N1

There are so many visual treats all over this house, which is essentially a cube, clad in stained black cedar - a single picture window at the front is all that indicates this is actually a house. This is a photographer's dream house in more ways than one. In this beautiful sanctuary there is soft artificial lighting and clever techniques used to draw in natural daylight such as the triple-height well inside the front entrance. Thick double doors and hemp insulated walls make this a quiet place to shoot dialogue and it also features a large double door hatch to load in furniture and heavy equipment. Upstairs in the main living room a large single-pane picture window

CAROL HAYES
MANAGEMENT

020 7482 1555

www.carolhayesmanagement.co.uk



De Beauvoir Noir N1

There are so many visual treats all over this house, which is essentially a cube, clad in stained black cedar - a single floor window at the front is all that indicates this is actually a house. This is a photographer's dream house in more ways than one. In this beautiful sanctuary there is soft artificial lighting and clever techniques used to draw in natural daylight such as the triple-height well inside the front entrance. Thick double doors and hemp insulated walls make this a quiet place to shoot dialogue and it also features a large double door hatch to load in furniture and heavy equipment. Upstairs in the main living room a large single-pane picture window

CAROL HAYES
MANAGEMENT

020 7482 1555

www.carolhayesmanagement.co.uk



De Beauvoir Noir N1

There are so many visual treats all over this house, which is essentially a cube, clad in stained black cedar - a single floor window at the front is all that indicates this is actually a house. This is a photographer's dream house in more ways than one. In this beautiful sanctuary there is soft artificial lighting and clever techniques used to draw in natural daylight such as the triple-height well inside the front entrance. Thick double doors and hemp insulated walls make this a quiet place to shoot dialogue and it also features a large double door hatch to load in furniture and heavy equipment. Upstairs in the main living room a large single-pane picture window

CAROL HAYES
MANAGEMENT

020 7482 1555

www.carolhayesmanagement.co.uk



De Beauvoir Noir N1

There are so many visual treats all over this house, which is essentially a cube, clad in stained black cedar - a simple flat window at the front is all that indicates this is actually a house. This is a photographer's dream house in more ways than one. In this beautiful sanctuary there is soft artificial lighting and clever techniques used to draw in natural daylight such as the triple-height well inside the front entrance. Thick double doors and hemp insulated walls make this a quiet place to shoot dialogue and it also features a large double door hatch to load in furniture and heavy equipment. Upstairs in the main living room a large single-pane picture window

CAROL HAYES
MANAGEMENT

020 7482 1555

www.carolhayesmanagement.co.uk



De Beauvoir Noir N1

There are so many visual treats all over this house, which is essentially a cube, clad in stained black cedar - a single floor window at the front is all that indicates this is actually a house. This is a photographer's dream house in more ways than one. In this beautiful sanctuary there is soft artificial lighting and clever techniques used to draw in natural daylight such as the triple-height well inside the front entrance. Thick double doors and hemp insulated walls make this a quiet place to shoot dialogue and it also features a large double door hatch to load in furniture and heavy equipment. Upstairs in the main living room a large single-pane picture window

CAROL HAYES
MANAGEMENT

020 7482 1555

www.carolhayesmanagement.co.uk



De Beauvoir Noir N1

There are so many visual treats all over this house, which is essentially a cube, clad in stained black cedar - a single picture window at the front is all that indicates this is actually a house. This is a photographer's dream house in more ways than one. In this beautiful sanctuary there is soft artificial lighting and clever techniques used to draw in natural daylight such as the triple-height well inside the front entrance. Thick double doors and hemp insulated walls make this a quiet place to shoot dialogue and it also features a large double door hatch to load in furniture and heavy equipment. Upstairs in the main living room a large single-pane picture window

CAROL HAYES
MANAGEMENT

020 7482 1555

www.carolhayesmanagement.co.uk



De Beauvoir Noir N1

There are so many visual treats all over this house, which is essentially a cube, clad in stained black cedar - a single flat window at the front is all that indicates this is actually a house. This is a photographer's dream house in more ways than one. In this beautiful sanctuary there is soft artificial lighting and clever techniques used to draw in natural daylight such as the triple-height well inside the front entrance. Thick double doors and hemp insulated walls make this a quiet place to shoot dialogue and it also features a large double door hatch to load in furniture and heavy equipment. Upstairs in the main living room a large single-pane picture window

CAROL HAYES
MANAGEMENT

020 7482 1555

www.carolhayesmanagement.co.uk



De Beauvoir Noir N1

There are so many visual treats all over this house, which is essentially a cube, clad in stained black cedar - a single, flat window at the front is all that indicates this is actually a house. This is a photographer's dream house in more ways than one. In this beautiful sanctuary there is soft artificial lighting and clever techniques used to draw in natural daylight such as the triple-height well inside the front entrance. Thick double doors and hemp insulated walls make this a quiet place to shoot dialogue and it also features a large double door hatch to load in furniture and heavy equipment. Upstairs in the main living room a large single-pane picture window

CAROL HAYES
MANAGEMENT

020 7482 1555

www.carolhayesmanagement.co.uk



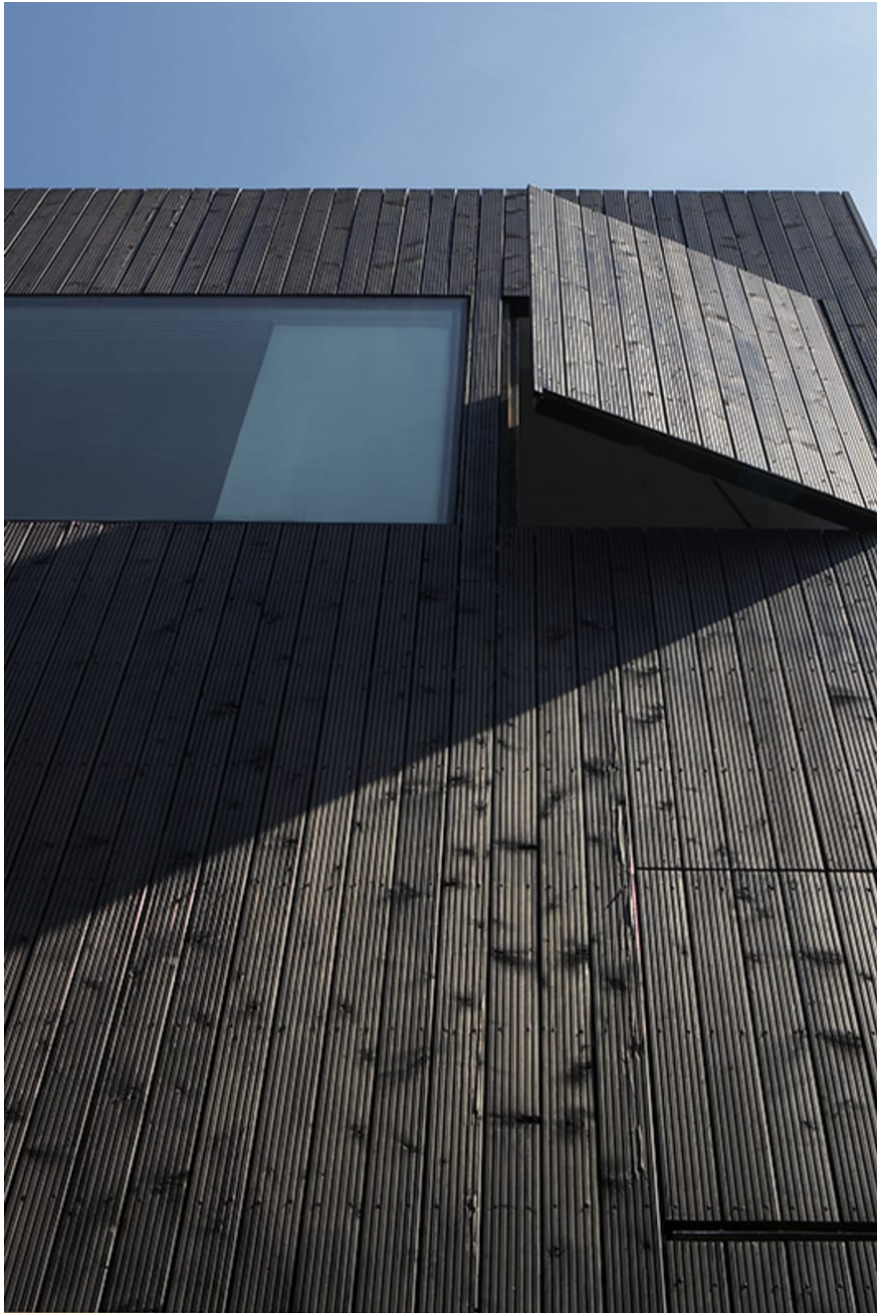
De Beauvoir Noir N1

There are so many visual treats all over this house, which is essentially a cube, clad in stained black cedar - a single picture window at the front is all that indicates this is actually a house. This is a photographer's dream house in more ways than one. In this beautiful sanctuary there is soft artificial lighting and clever techniques used to draw in natural daylight such as the triple-height well inside the front entrance. Thick double doors and hemp insulated walls make this a quiet place to shoot dialogue and it also features a large double door hatch to load in furniture and heavy equipment. Upstairs in the main living room a large single-pane picture window

CAROL HAYES
MANAGEMENT

020 7482 1555

www.carolhayesmanagement.co.uk



De Beauvoir Noir N1

There are so many visual treats all over this house, which is essentially a cube, clad in stained black cedar - a single picture window at the front is all that indicates this is actually a house. This is a photographer's dream house in more ways than one. In this beautiful sanctuary there is soft artificial lighting and clever techniques used to draw in natural daylight such as the triple-height well inside the front entrance. Thick double doors and hemp insulated walls make this a quiet place to shoot dialogue and it also features a large double door hatch to load in furniture and heavy equipment. Upstairs in the main living room a large single-pane picture window

CAROL HAYES
MANAGEMENT

020 7482 1555

www.carolhayesmanagement.co.uk



De Beauvoir Noir N1

There are so many visual treats all over this house, which is essentially a cube, clad in stained black cedar - a single flat window at the front is all that indicates this is actually a house. This is a photographer's dream house in more ways than one. In this beautiful sanctuary there is soft artificial lighting and clever techniques used to draw in natural daylight such as the triple-height well inside the front entrance. Thick double doors and hemp insulated walls make this a quiet place to shoot dialogue and it also features a large double door hatch to load in furniture and heavy equipment. Upstairs in the main living room a large single-pane picture window

CAROL HAYES
MANAGEMENT

020 7482 1555

www.carolhayesmanagement.co.uk



De Beauvoir Noir N1

There are so many visual treats all over this house, which is essentially a cube, clad in stained black cedar - a single flat window at the front is all that indicates this is actually a house. This is a photographer's dream house in more ways than one. In this beautiful sanctuary there is soft artificial lighting and clever techniques used to draw in natural daylight such as the triple-height well inside the front entrance. Thick double doors and hemp insulated walls make this a quiet place to shoot dialogue and it also features a large double door hatch to load in furniture and heavy equipment. Upstairs in the main living room a large single-pane picture window

CAROL HAYES
MANAGEMENT

020 7482 1555

www.carolhayesmanagement.co.uk



De Beauvoir Noir N1

There are so many visual treats all over this house, which is essentially a cube, clad in stained black cedar - a single flat window at the front is all that indicates this is actually a house. This is a photographer's dream house in more ways than one. In this beautiful sanctuary there is soft artificial lighting and clever techniques used to draw in natural daylight such as the triple-height well inside the front entrance. Thick double doors and hemp insulated walls make this a quiet place to shoot dialogue and it also features a large double door hatch to load in furniture and heavy equipment. Upstairs in the main living room a large single-pane picture window

CAROL HAYES
MANAGEMENT

020 7482 1555

www.carolhayesmanagement.co.uk



De Beauvoir Noir N1

There are so many visual treats all over this house, which is essentially a cube, clad in stained black cedar – a single flat window at the front is all that indicates this is actually a house. This is a photographer's dream house in more ways than one. In this beautiful sanctuary there is soft artificial lighting and clever techniques used to draw in natural daylight such as the triple-height well inside the front entrance. Thick double doors and hemp insulated walls make this a quiet place to shoot dialogue and it also features a large double door hatch to load in furniture and heavy equipment. Upstairs in the main living room a large single-pane picture window

CAROL HAYES
MANAGEMENT

020 7482 1555

www.carolhayesmanagement.co.uk