

Revelstoke House

Revelstoke House is an elegant mansion set in the heart of London's Mayfair. The original building constructed in the mid-18th-century, and was converted by Lord Revelstoke into a beautiful Mayfair town house in the later 19th-century. It was until the outbreak of war in 1914 when it was converted into a military Red Cross hospital. Many stunning original features are preserved, from the Robert Adam's fireplace to the painted ceiling by Pierre-Victor Galland above the grand Belgian marble staircase leading to the first floor function rooms. Individually designed rooms with fine ornate high ceilings incorporate the rococo opulence in the Anglo-French style.





Revelstoke House

Revelstoke House is an elegant mansion set in the heart of London's Mayfair. The original building constructed in the mid 18th-century, and was converted by Lord Revelstoke into a beautiful Mayfair town house in the later 19th-century. It was until the outbreak of war in 1914 when it was converted into a military Red Cross hospital. Many stunning original features are preserved, from the Robert Adam's fireplace to the painted ceiling by Pierre-Victor Galland above the grand Belgian marble staircase leading to the first floor function rooms. Individually designed rooms with fine ornate high ceilings incorporate the rococo opulence in the Anglo-

CAROL HAYES
MANAGEMENT

020 7482 1555

www.carolhayesmanagement.co.uk



Revelstoke House

Revelstoke House is an elegant mansion set in the heart of London's Mayfair. The original building constructed in the mid 18th-century, and was converted by Lord Revelstoke into a beautiful Mayfair town house in the later 19th-century. It was until the outbreak of war in 1914 when it was converted into a military Red Cross hospital. Many stunning original features are preserved, from the Robert Adam's fireplace to the painted ceiling by Pierre-Victor Galland above the grand Belgian marble staircase leading to the first floor function rooms. Individually designed rooms with fine ornate high ceilings incorporate the rococo opulence in the Anglo-

CAROL HAYES
MANAGEMENT
RESIDENTIAL & COMMERCIAL

020 7482 1555

www.carolhayesmanagement.co.uk



Revelstoke House

Revelstoke House is an elegant mansion set in the heart of London's Mayfair. The original building constructed in the mid-18th-century, and was converted by Lord Revelstoke into a beautiful Mayfair town house in the later 19th-century. It was until the outbreak of war in 1914 when it was converted into a military Red Cross hospital. Many stunning original features are preserved, from the Robert Adam's fireplace to the painted ceiling by Pierre-Victor Galland above the grand Belgian marble staircase leading to the first floor function rooms. Individually designed rooms with fine ornate high ceilings incorporate the rococo opulence in the Anglo-

CAROL HAYES
MANAGEMENT

020 7482 1555

www.carolhayesmanagement.co.uk



Revelstoke House

Revelstoke House is an elegant mansion set in the heart of London's Mayfair. The original building constructed in the mid 18th-century, and was converted by Lord Revelstoke into a beautiful Mayfair town house in the later 19th-century. It was until the outbreak of war in 1914 when it was converted into a military Red Cross hospital. Many stunning original features are preserved, from the Robert Adam's fireplace to the painted ceiling by Pierre-Victor Galland above the grand Belgian marble staircase leading to the first floor function rooms. Individually designed rooms with fine ornate high ceilings incorporate the rococo opulence in the Anglo-

CAROL HAYES
MANAGEMENT
RESIDENTIAL & COMMERCIAL

020 7482 1555

www.carolhayesmanagement.co.uk



Revelstoke House

Revelstoke House is an elegant mansion set in the heart of London's Mayfair. The original building constructed in the mid 18th-century, and was converted by Lord Revelstoke into a beautiful Mayfair town house in the later 19th-century. It was until the outbreak of war in 1914 when it was converted into a military Red Cross hospital. Many stunning original features are preserved, from the Robert Adam's fireplace to the painted ceiling by Pierre-Victor Galland above the grand Belgian marble staircase leading to the first floor function rooms. Individually designed rooms with fine ornate high ceilings incorporate the rococo opulence in the Anglo-

CAROL HAYES
MANAGEMENT

020 7482 1555

www.carolhayesmanagement.co.uk



Revelstoke House

Revelstoke House is an elegant mansion set in the heart of London's Mayfair. The original building constructed in the mid-18th-century, and was converted by Lord Revelstoke into a beautiful Mayfair town house in the later 19th-century. It was until the outbreak of war in 1914 when it was converted into a military Red Cross hospital. Many stunning original features are preserved, from the Robert Adam's fireplace to the painted ceiling by Pierre-Victor Galland above the grand Belgian marble staircase leading to the first floor function rooms. Individually designed rooms with fine ornate high ceilings incorporate the rococo opulence in the Anglo-

CAROL HAYES
MANAGEMENT

020 7482 1555

www.carolhayesmanagement.co.uk



Revelstoke House

Revelstoke House is an elegant mansion set in the heart of London's Mayfair. The original building constructed in the mid-18th-century, and was converted by Lord Revelstoke into a beautiful Mayfair town house in the later 19th-century. It was until the outbreak of war in 1914 when it was converted into a military Red Cross hospital. Many stunning original features are preserved, from the Robert Adam's fireplace to the painted ceiling by Pierre-Victor Galland above the grand Belgian marble staircase leading to the first floor function rooms. Individually designed rooms with fine ornate high ceilings incorporate the rococo opulence in the Anglo-

CAROL HAYES
MANAGEMENT

020 7482 1555

www.carolhayesmanagement.co.uk



Revelstoke House

Revelstoke House is an elegant mansion set in the heart of London's Mayfair. The original building constructed in the mid 18th-century, and was converted by Lord Revelstoke into a beautiful Mayfair town house in the later 19th-century. It was until the outbreak of war in 1914 when it was converted into a military Red Cross hospital. Many stunning original features are preserved, from the Robert Adam's fireplace to the painted ceiling by Pierre-Victor Galland above the grand Belgian marble staircase leading to the first floor function rooms. Individually designed rooms with fine ornate high ceilings incorporate the rococo opulence in the Anglo-

CAROL HAYES
MANAGEMENT
RESIDENTIAL & COMMERCIAL

020 7482 1555

www.carolhayesmanagement.co.uk



Revelstoke House

Revelstoke House is an elegant mansion set in the heart of London's Mayfair. The original building constructed in the mid 18th-century, and was converted by Lord Revelstoke into a beautiful Mayfair town house in the later 19th-century. It was until the outbreak of war in 1914 when it was converted into a military Red Cross hospital. Many stunning original features are preserved, from the Robert Adam's fireplace to the painted ceiling by Pierre-Victor Galland above the grand Belgian marble staircase leading to the first floor function rooms. Individually designed rooms with fine ornate high ceilings incorporate the rococo opulence in the Anglo-

CAROL HAYES
MANAGEMENT

020 7482 1555

www.carolhayesmanagement.co.uk



Revelstoke House

Revelstoke House is an elegant mansion set in the heart of London's Mayfair. The original building constructed in the mid-18th-century, and was converted by Lord Revelstoke into a beautiful Mayfair town house in the later 19th-century. It was until the outbreak of war in 1914 when it was converted into a military Red Cross hospital. Many stunning original features are preserved, from the Robert Adam's fireplace to the painted ceiling by Pierre-Victor Galland above the grand Belgian marble staircase leading to the first floor function rooms. Individually designed rooms with fine ornate high ceilings incorporate the rococo opulence in the Anglo-

CAROL HAYES
MANAGEMENT

020 7482 1555

www.carolhayesmanagement.co.uk



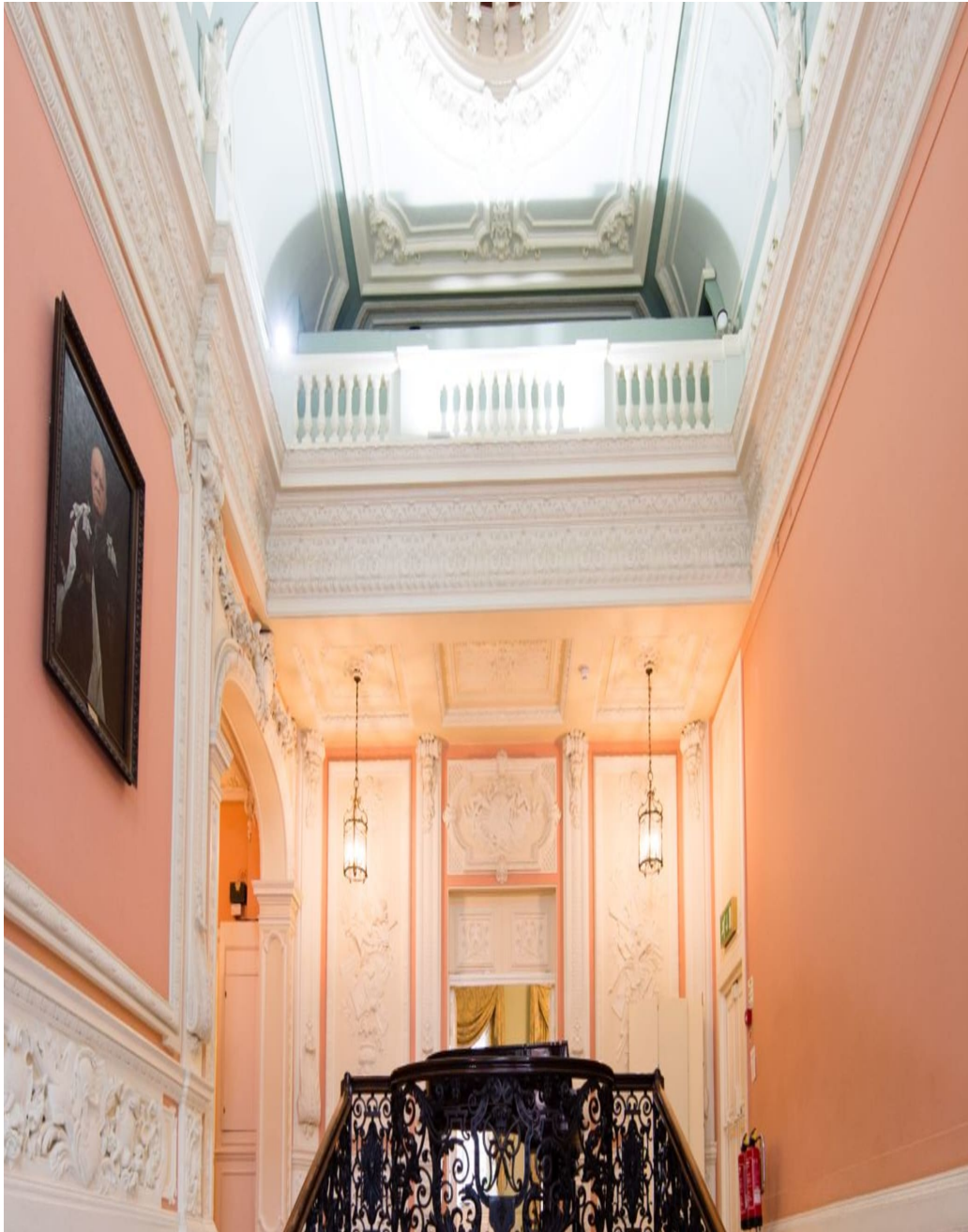
Revelstoke House

Revelstoke House is an elegant mansion set in the heart of London's Mayfair. The original building constructed in the mid-18th-century, and was converted by Lord Revelstoke into a beautiful Mayfair town house in the later 19th-century. It was until the outbreak of war in 1914 when it was converted into a military Red Cross hospital. Many stunning original features are preserved, from the Robert Adam's fireplace to the painted ceiling by Pierre-Victor Galland above the grand Belgian marble staircase leading to the first floor function rooms. Individually designed rooms with fine ornate high ceilings incorporate the rococo opulence in the Anglo-

CAROL HAYES
MANAGEMENT

020 7482 1555

www.carolhayesmanagement.co.uk



Revelstoke House

Revelstoke House is an elegant mansion set in the heart of London's Mayfair. The original building constructed in the mid 18th-century, and was converted by Lord Revelstoke into a beautiful Mayfair town house in the later 19th-century. It was until the outbreak of war in 1914 when it was converted into a military Red Cross hospital. Many stunning original features are preserved, from the Robert Adam's fireplace to the painted ceiling by Pierre-Victor Galland above the grand Belgian marble staircase leading to the first floor function rooms. Individually designed rooms with fine ornate high ceilings incorporate the rococo opulence in the Anglo-

CAROL HAYES
MANAGEMENT

020 7482 1555

www.carolhayesmanagement.co.uk



Revelstoke House

Revelstoke House is an elegant mansion set in the heart of London's Mayfair. The original building constructed in the mid-18th-century, and was converted by Lord Revelstoke into a beautiful Mayfair town house in the later 19th-century. It was until the outbreak of war in 1914 when it was converted into a military Red Cross hospital. Many stunning original features are preserved, from the Robert Adam's fireplace to the painted ceiling by Pierre-Victor Galland above the grand Belgian marble staircase leading to the first floor function rooms. Individually designed rooms with fine ornate high ceilings incorporate the rococo opulence in the Anglo-

CAROL HAYES
MANAGEMENT

020 7482 1555

www.carolhayesmanagement.co.uk



Revelstoke House

Revelstoke House is an elegant mansion set in the heart of London's Mayfair. The original building constructed in the mid 18th-century, and was converted by Lord Revelstoke into a beautiful Mayfair town house in the later 19th-century. It was until the outbreak of war in 1914 when it was converted into a military Red Cross hospital. Many stunning original features are preserved, from the Robert Adam's fireplace to the painted ceiling by Pierre-Victor Galland above the grand Belgian marble staircase leading to the first floor function rooms. Individually designed rooms with fine ornate high ceilings incorporate the rococo opulence in the Anglo-

CAROL HAYES
MANAGEMENT
RESIDENTIAL & COMMERCIAL

020 7482 1555

www.carolhayesmanagement.co.uk



Revelstoke House

Revelstoke House is an elegant mansion set in the heart of London's Mayfair. The original building constructed in the mid-18th-century, and was converted by Lord Revelstoke into a beautiful Mayfair town house in the later 19th-century. It was until the outbreak of war in 1914 when it was converted into a military Red Cross hospital. Many stunning original features are preserved, from the Robert Adam's fireplace to the painted ceiling by Pierre-Victor Galland above the grand Belgian marble staircase leading to the first floor function rooms. Individually designed rooms with fine ornate high ceilings incorporate the rococo opulence in the Anglo-

CAROL HAYES
MANAGEMENT

020 7482 1555

www.carolhayesmanagement.co.uk



Revelstoke House

Revelstoke House is an elegant mansion set in the heart of London's Mayfair. The original building constructed in the mid 18th-century, and was converted by Lord Revelstoke into a beautiful Mayfair town house in the later 19th-century. It was until the outbreak of war in 1914 when it was converted into a military Red Cross hospital. Many stunning original features are preserved, from the Robert Adam's fireplace to the painted ceiling by Pierre-Victor Galland above the grand Belgian marble staircase leading to the first floor function rooms. Individually designed rooms with fine ornate high ceilings incorporate the rococo opulence in the Anglo-

CAROL HAYES
MANAGEMENT

020 7482 1555

www.carolhayesmanagement.co.uk