

Kenny Leung

Makeup Artist | Hair & Makeup | Mens Grooming

Beauty





Kenny Leung

Makeup Artist | Hair & Makeup | Mens Grooming
Beauty

CAROL HAYES
MANAGEMENT
CREATIVE ARTIST & STYLE MANAGEMENT

020 7482 1555

www.carolhayesmanagement.co.uk



Kenny Leung

Makeup Artist | Hair & Makeup | Mens Grooming
Beauty

CAROL HAYES
MANAGEMENT
CREATIVE ARTIST & STYLE MANAGEMENT

020 7482 1555

www.carolhayesmanagement.co.uk



Kenny Leung

Makeup Artist | Hair & Makeup | Mens Grooming
Beauty

CAROL HAYES
MANAGEMENT
CREATIVE ARTIST & STYLE MANAGEMENT

020 7482 1555

www.carolhayesmanagement.co.uk



Kenny Leung

Makeup Artist | Hair & Makeup | Mens Grooming
Beauty



CAROL HAYES
MANAGEMENT
CREATIVE ARTIST & STYLE MANAGEMENT

020 7482 1555

www.carolhayesmanagement.co.uk



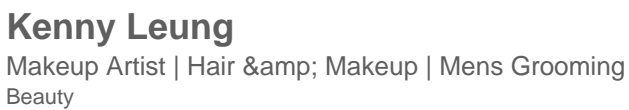
Kenny Leung

Makeup Artist | Hair & Makeup | Mens Grooming
Beauty

CAROLHAYES
MANAGEMENT
CREATIVE ARTIST & STYLE MANAGEMENT

020 7482 1555

www.carolhayesmanagement.co.uk





Kenny Leung

Makeup Artist | Hair & Makeup | Mens Grooming
Beauty

CAROL HAYES
MANAGEMENT
CREATIVE ARTIST & STYLE MANAGEMENT

020 7482 1555

www.carolhayesmanagement.co.uk

#BEAUTY



Kenny Leung

Makeup Artist | Hair & Makeup | Mens Grooming
Beauty

**CAROL HAYES
MANAGEMENT**
CREATIVE ARTIST & STYLE MANAGEMENT

020 7482 1555

www.carolhayesmanagement.co.uk



Kenny Leung

Makeup Artist | Hair & Makeup | Mens Grooming
Beauty

**CAROLHAYES
MANAGEMENT**
CREATIVE ARTIST & STYLE MANAGEMENT

020 7482 1555

www.carolhayesmanagement.co.uk



Kenny Leung

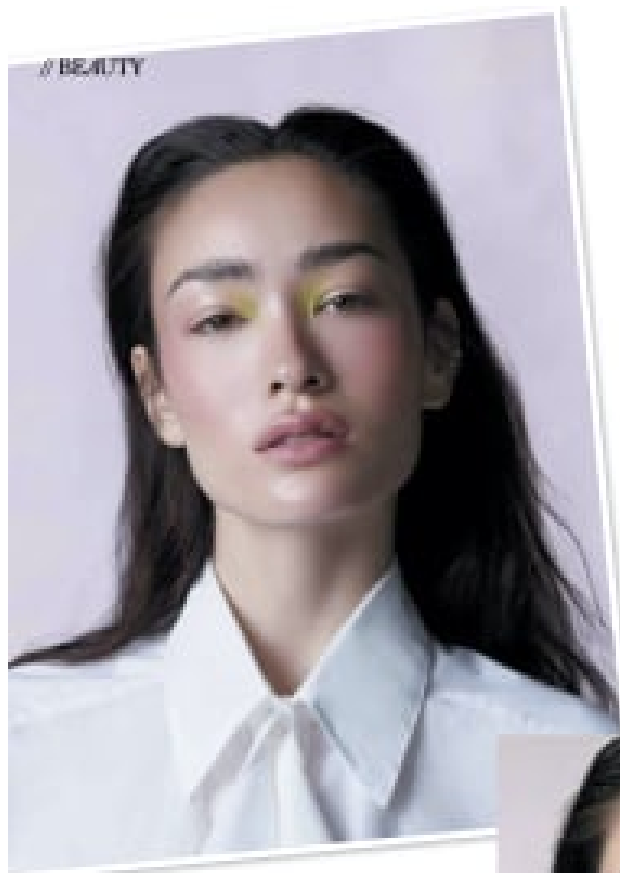
Makeup Artist | Hair & Makeup | Mens Grooming
Beauty

CAROL HAYES
MANAGEMENT
CREATIVE ARTIST & STYLE MANAGEMENT



020 7482 1555

www.carolhayesmanagement.co.uk



#BEAUTY

HOW to ROCK LIME GREEN EYESHADOW

- 1 Apply lime green eyeshadow
- 2 Blend and buff out eyeshadow into desired shade
- 3 Apply a matching eyeshadow to the lower eyelid
- 4 Complete the look with a matching color



HAIR
Toni
MAGGIE
Toni
Toni

MAKEUP
Beauty: Make-up Artist in New York
MAGGIE
Toni
Toni

SKIN
MAGGIE LARSEN
Toni
Toni
Toni

HAIR
MAGGIE LARSEN
Toni
Toni
Toni

100 | Fall | September 2014



HOW to SHOCK with BLUE LASHES

- 1 Apply blue eyeshadow to the upper eyelid
- 2 Apply blue eyeshadow to the lower eyelid
- 3 Apply blue eyeshadow to the inner corner of the eye
- 4 Apply blue eyeshadow to the outer corner of the eye

HAIR
Toni
MAGGIE
Toni

MAKEUP
Beauty: Make-up Artist in New York
MAGGIE
Toni

SKIN
MAGGIE LARSEN
Toni
Toni

HAIR
MAGGIE LARSEN
Toni
Toni

MAKEUP
Beauty: Make-up Artist in New York
MAGGIE
Toni

SKIN
MAGGIE LARSEN
Toni
Toni

September 2014 | Fall | 117

Kenny Leung

Makeup Artist | Hair & Makeup | Mens Grooming
Beauty

CAROL HAYES
MANAGEMENT
CREATIVE ARTIST & STYLE MANAGEMENT

020 7482 1555

www.carolhayesmanagement.co.uk

#BEAUTY



© 2024 Kenny Leung

Kenny Leung

Makeup Artist | Hair & Makeup | Mens Grooming
Beauty

CAROL HAYES
MANAGEMENT
CREATIVE ARTIST & STYLE MANAGEMENT

020 7482 1555

www.carolhayesmanagement.co.uk



Kenny Leung

Makeup Artist | Hair & Makeup | Mens Grooming
Beauty



CAROL HAYES
MANAGEMENT
CREATIVE ARTIST & STYLE MANAGEMENT

020 7482 1555

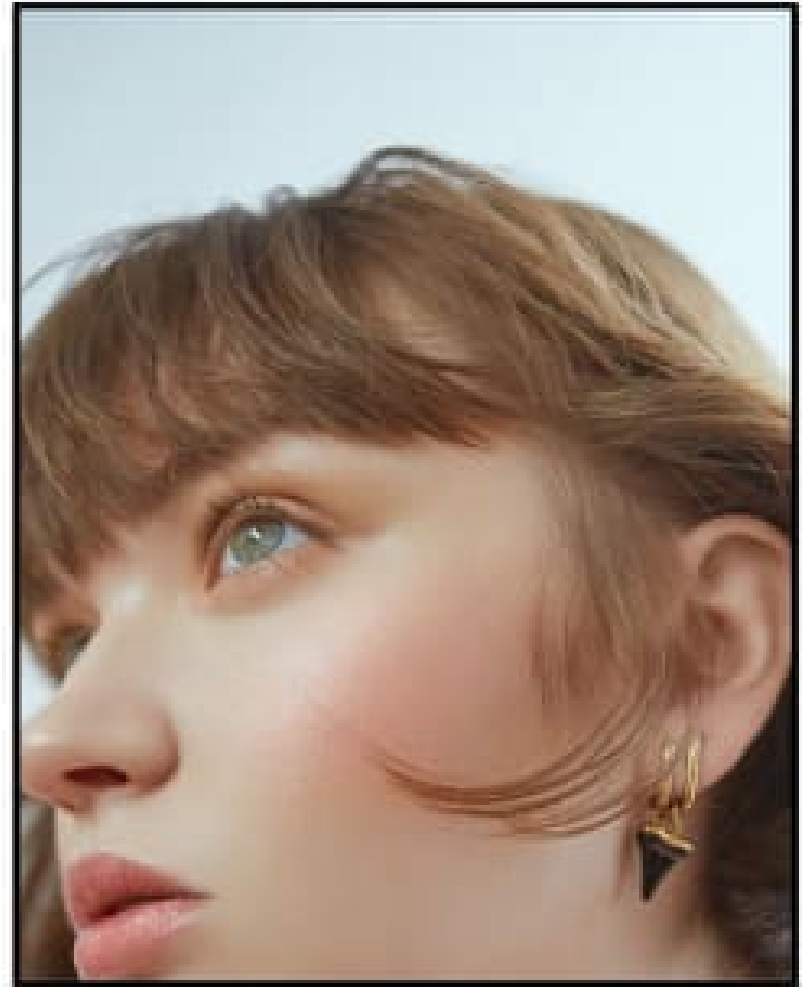
www.carolhayesmanagement.co.uk



Kenny Leung

Makeup Artist | Hair & Makeup | Mens Grooming
Beauty

CAROL HAYES
MANAGEMENT
CREATIVE ARTIST & STYLE MANAGEMENT



020 7482 1555

www.carolhayesmanagement.co.uk



June 2020 | Beauty | 105

#BEAUTY



106 | Beauty | June 2020

Kenny Leung

Makeup Artist | Hair & Makeup | Mens Grooming
Beauty

CAROL HAYES
MANAGEMENT
CREATIVE ARTIST & STYLE MANAGEMENT

020 7482 1555

www.carolhayesmanagement.co.uk

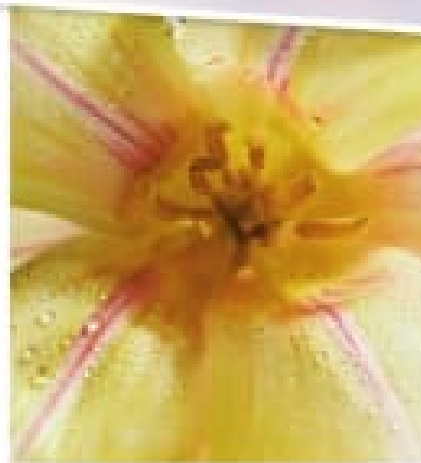
1. **What is a common risk factor for stroke in the general population?**
2. **What is the most common cause of stroke in the general population?**
3. **What is the most common cause of stroke in the general population?**
4. **What is the most common cause of stroke in the general population?**

[illegible]

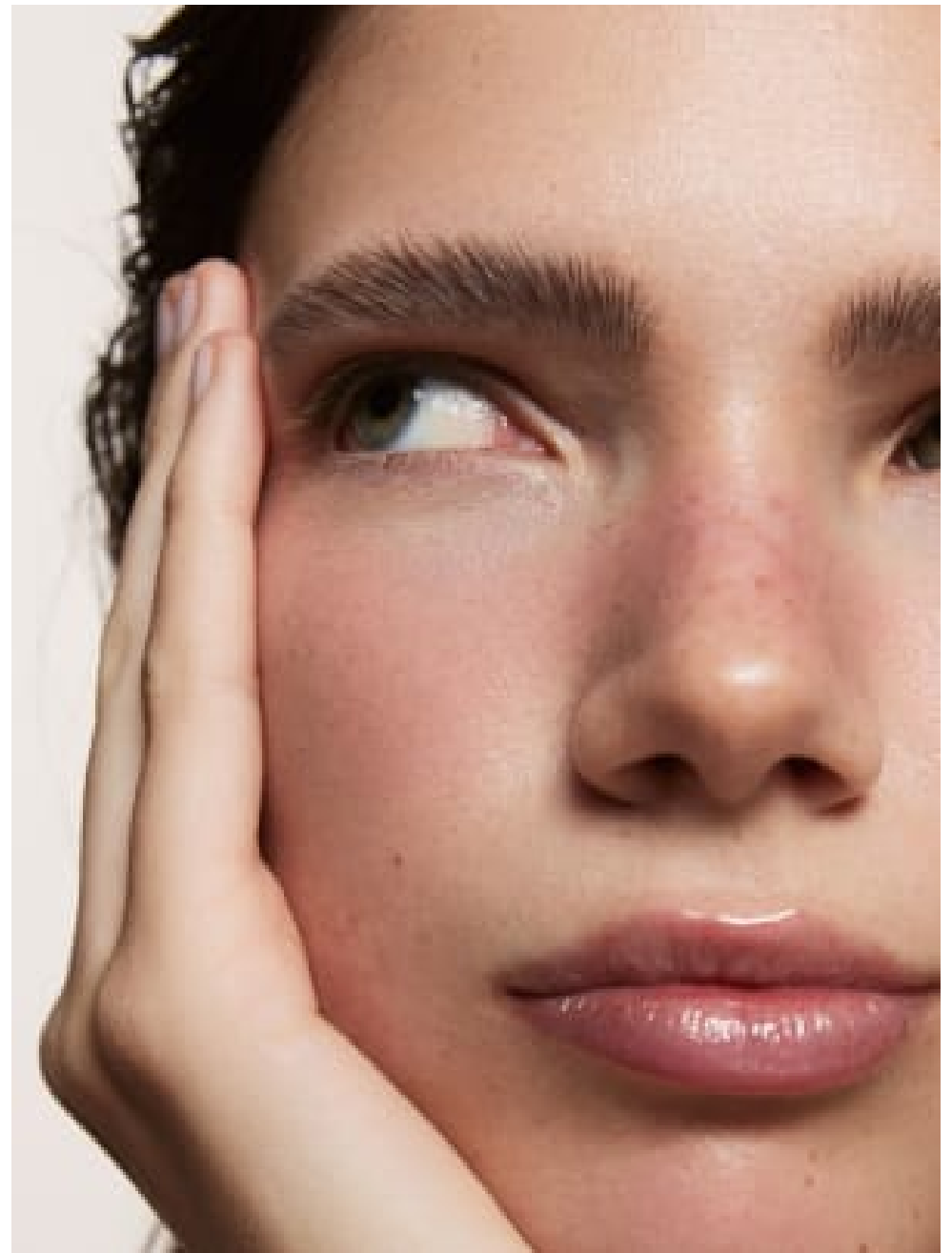
1999, 2000, 2001, 2002, 2003, 2004, 2005, 2006, 2007, 2008, 2009, 2010, 2011, 2012, 2013, 2014, 2015, 2016, 2017, 2018, 2019, 2020, 2021, 2022, 2023, 2024, 2025, 2026, 2027, 2028, 2029, 2030, 2031, 2032, 2033, 2034, 2035, 2036, 2037, 2038, 2039, 2040, 2041, 2042, 2043, 2044, 2045, 2046, 2047, 2048, 2049, 2050, 2051, 2052, 2053, 2054, 2055, 2056, 2057, 2058, 2059, 2060, 2061, 2062, 2063, 2064, 2065, 2066, 2067, 2068, 2069, 2070, 2071, 2072, 2073, 2074, 2075, 2076, 2077, 2078, 2079, 2080, 2081, 2082, 2083, 2084, 2085, 2086, 2087, 2088, 2089, 2090, 2091, 2092, 2093, 2094, 2095, 2096, 2097, 2098, 2099, 2100, 2101, 2102, 2103, 2104, 2105, 2106, 2107, 2108, 2109, 2110, 2111, 2112, 2113, 2114, 2115, 2116, 2117, 2118, 2119, 2120, 2121, 2122, 2123, 2124, 2125, 2126, 2127, 2128, 2129, 2130, 2131, 2132, 2133, 2134, 2135, 2136, 2137, 2138, 2139, 2140, 2141, 2142, 2143, 2144, 2145, 2146, 2147, 2148, 2149, 2150, 2151, 2152, 2153, 2154, 2155, 2156, 2157, 2158, 2159, 2160, 2161, 2162, 2163, 2164, 2165, 2166, 2167, 2168, 2169, 2170, 2171, 2172, 2173, 2174, 2175, 2176, 2177, 2178, 2179, 2180, 2181, 2182, 2183, 2184, 2185, 2186, 2187, 2188, 2189, 2190, 2191, 2192, 2193, 2194, 2195, 2196, 2197, 2198, 2199, 2200, 2201, 2202, 2203, 2204, 2205, 2206, 2207, 2208, 2209, 2210, 2211, 2212, 2213, 2214, 2215, 2216, 2217, 2218, 2219, 2220, 2221, 2222, 2223, 2224, 2225, 2226, 2227, 2228, 2229, 2230, 2231, 2232, 2233, 2234, 2235, 2236, 2237, 2238, 2239, 2240, 2241, 2242, 2243, 2244, 2245, 2246, 2247, 2248, 2249, 2250, 2251, 2252, 2253, 2254, 2255, 2256, 2257, 2258, 2259, 2260, 2261, 2262, 2263, 2264, 2265, 2266, 2267, 2268, 2269, 2270, 2271, 2272, 2273, 2274, 2275, 2276, 2277, 2278, 2279, 2280, 2281, 2282, 2283, 2284, 2285, 2286, 2287, 2288, 2289, 2290, 2291, 2292, 2293, 2294, 2295, 2296, 2297, 2298, 2299, 2300, 2301, 2302, 2303, 2304, 2305, 2306, 2307, 2308, 2309, 2310, 2311, 2312, 2313, 2314, 2315, 2316, 2317, 2318, 2319, 2320, 2321, 2322, 2323, 2324, 2325, 2326, 2327, 2328, 2329, 2330, 2331, 2332, 2333, 2334, 2335, 2336, 2337, 2338, 2339, 2340, 2341, 2342, 2343, 2344, 2345, 2346, 2347, 2348, 2349, 2350, 2351, 2352, 2353, 2354, 2355, 2356, 2357, 2358, 2359, 2360, 2361, 2362, 2363, 2364, 2365, 2366, 2367, 2368, 2369, 2370, 2371, 2372, 2373, 2374, 2375, 2376, 2377, 2378, 2379, 2380, 2381, 2382, 2383, 2384, 2385, 2386, 2387, 2388, 2389, 2390, 2391, 2392, 2393, 2394, 2395, 2396, 2397, 2398, 2399, 2400, 2401, 2402, 2403, 2404, 2405, 2406, 2407, 2408, 2409, 2410, 2411, 2412, 2413, 2414, 2415, 2416, 2417, 2418, 2419, 2420, 2421, 2422, 2423, 2424, 2425, 2426, 2427, 2428, 2429, 2430, 2431, 2432, 2433, 2434, 2435, 2436, 2437, 2438, 2439, 2440, 2441, 2442, 2443, 2444, 2445, 2446, 2447, 2448, 2449, 2450, 2451, 2452, 2453, 2454, 2455, 2456, 2457, 2458, 2459, 2460, 2461, 2462, 2463, 2464, 2465, 2466, 2467, 2468, 2469, 2470, 2471, 2472, 2473, 2474, 2475, 2476, 2477, 2478, 2479, 2480, 2481, 2482, 2483, 2484, 2485, 2486, 2487, 2488, 2489, 2490, 2491, 2492, 2493, 2494, 2495, 2496, 2497, 2498, 2499, 2500, 2501, 2502, 2503, 2504, 2505, 2506, 2507, 2508, 2509, 2510, 2511, 2512, 2513, 2514, 2515, 2516, 2517, 2518, 2519, 2520, 2521, 2522, 2523, 2524, 2525, 2526, 2527, 2528, 2529, 2530, 2531, 2532, 2533, 2534, 2535, 2536, 2537, 2538, 2539, 2540, 2541, 2542, 2543, 2544, 2545, 2546, 2547, 2548, 2549, 2550, 2551, 2552, 2553, 2554, 2555, 2556, 2557, 2558, 2559, 2560, 2561, 2562, 2563, 2564, 2565, 2566, 2567, 2568, 2569, 2570, 2571, 2572, 2573, 2574, 2575, 2576, 2577, 2578, 2579, 2580, 2581, 2582, 2583, 2584, 2585, 2586, 2587, 2588, 2589, 2590, 2591, 2592, 2593, 2594, 2595, 2596, 2597, 2598, 2599, 2600, 2601, 2602, 2603, 2604, 2605, 2606, 2607, 2608, 2609, 2610, 2611, 2612, 2613, 2614, 2615, 2616, 2617, 2618, 2619, 2620, 2621, 2622, 2623, 2624, 2625, 2626, 2627, 2628, 2629, 2630, 2631, 2632, 2633, 2634, 2635, 2636, 2637, 2638, 2639, 2640, 2641, 2642, 2643, 2644, 2645, 2646, 2647, 2648, 2649, 2650, 2651, 2652, 2653, 2654, 2655, 2656, 2657, 2658, 2659, 2660, 2661, 2662, 2663, 2664, 2665, 2666, 2667, 2668, 2669, 2670, 2671, 2672, 2673, 2674, 2675, 2676, 2677, 2678, 2679, 2680, 26



1. From the scenario, using your knowledge of the patient's condition, select the most appropriate action.
2. Mark a response to the question with a checkmark in the column to the right of the question.
3. Use the following definitions to help you mark the question.
4. Your score, adding a self-assessment, is shown at the end of the article.



Abstract



Kenny Leung

Makeup Artist | Hair & Makeup | Mens Grooming
Beauty

CAROL HAYES
MANAGEMENT
CREATIVE ARTIST & STYLE MANAGEMENT

020 7482 1555

www.carolhayesmanagement.co.uk

#BEAUTY

FACE VALUE

*We all have skin in the game –
accentuate your angles with careful use
of glosses and blushes
to keep a dewy,
youthful look*



118 Fall / January/February 2019



Kenny Leung

Makeup Artist | Hair & Makeup | Mens Grooming
Beauty

**CAROL HAYES
MANAGEMENT**
CREATIVE ARTIST & STYLE MANAGEMENT

020 7482 1555

www.carolhayesmanagement.co.uk

Abstract:
The purpose of this study was to investigate the effects of a 12-week training program on the physical and psychological health of middle-aged men. The study was conducted in a community center in Beijing, China. The participants were 40 middle-aged men (mean age 45.5 years) who were divided into two groups: a control group (n=20) and an intervention group (n=20). The intervention group participated in a 12-week training program consisting of aerobic exercise, strength training, and flexibility exercises. The control group did not participate in any training program. The results showed that the intervention group had significantly higher levels of physical fitness and psychological health compared to the control group after 12 weeks of training. The findings suggest that a 12-week training program can improve the physical and psychological health of middle-aged men.



Bright ombre lip TIPS

- ☐ **1** Look for the 0 column first!
- ☐ **2** Multiply each coefficient
- ☐ **3** Identify negative numbers on the number of triangles
- ☐ **4** Start off the pink number with each row's exponent

© 2000 Blackwell Science Ltd *Journal of Internal Medicine* 247: 161–167



Colourful cycliner TIPS

1. Case identifier: organization or the problem
2. Applying the strategic framework: assessment for the context
3. Problem split response
4. Implementing response: describing the solution and how to implement it

[illegible]

Table 1

11/11/2011 11:11:11 AM

THESE THÈSES ONT ÉTÉ DÉPOSÉES À LA BIBLIOTHÈQUE NATIONALE
LE 15/05/2007 À 14H05

[illegible]

Makeup Artist | Hair & Makeup | Mens Grooming
Beauty

CAROL HAYES
MANAGEMENT
CREATIVE ARTIST & STYLE MANAGEMENT

www.carolhayesmanagement.co.uk



Kenny Leung

Makeup Artist | Hair & Makeup | Mens Grooming
 Beauty

CAROL HAYES
MANAGEMENT
 CREATIVE ARTIST & STYLE MANAGEMENT

020 7482 1555

www.carolhayesmanagement.co.uk



Kenny Leung

Makeup Artist | Hair & Makeup | Mens Grooming
 Beauty

CAROL HAYES
MANAGEMENT
 CREATIVE ARTIST & STYLE MANAGEMENT

020 7482 1555

www.carolhayesmanagement.co.uk



Kenny Leung

Makeup Artist | Hair & Makeup | Mens Grooming
Beauty

CAROL HAYES
MANAGEMENT
CREATIVE ARTIST & STYLE MANAGEMENT

020 7482 1555

www.carolhayesmanagement.co.uk



Kenny Leung

Makeup Artist | Hair & Makeup | Mens Grooming
Beauty

CAROLHAYES
MANAGEMENT
CREATIVE ARTIST & STYLE MANAGEMENT

020 7482 1555

www.carolhayesmanagement.co.uk



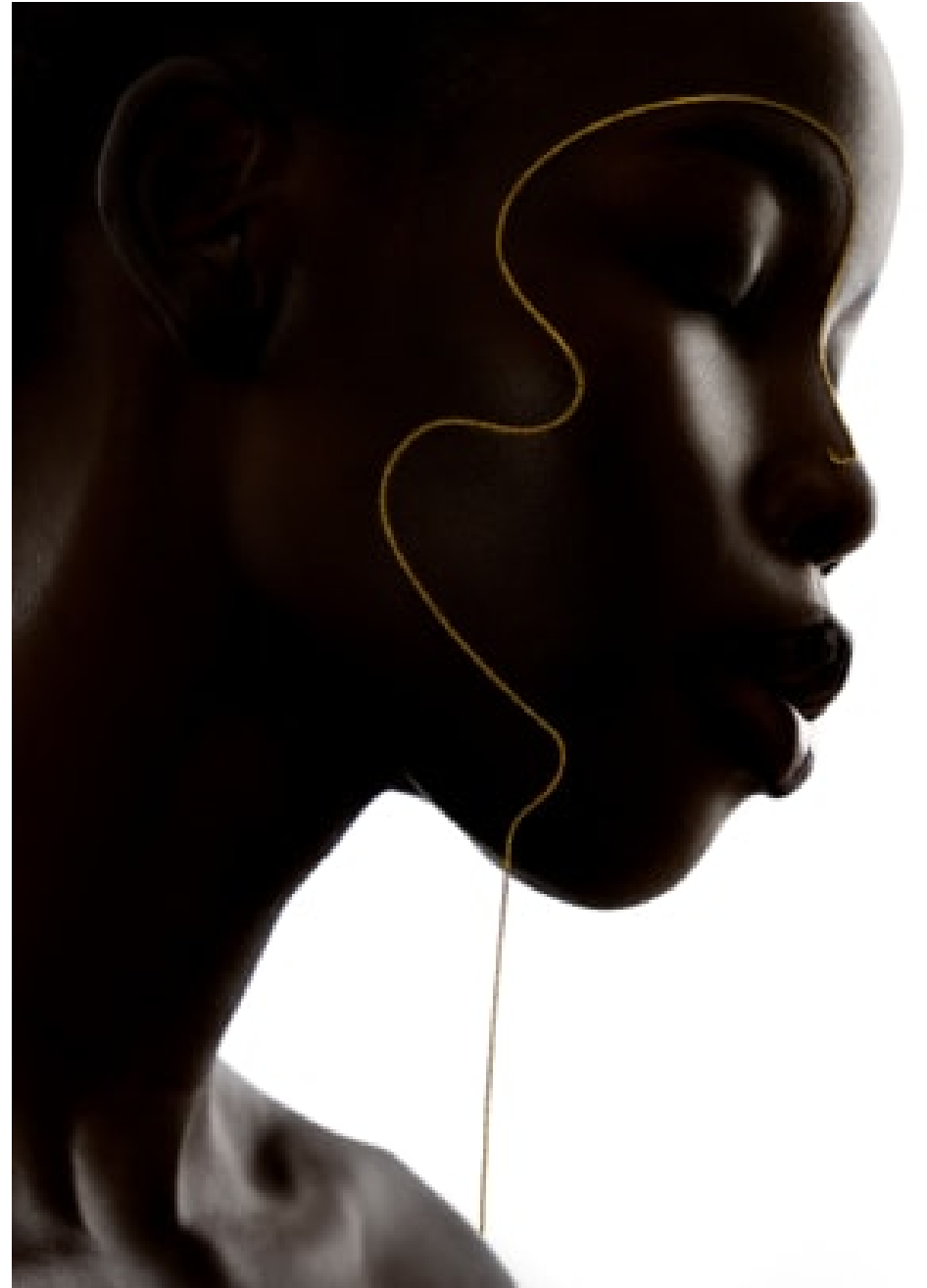
Kenny Leung

Makeup Artist | Hair & Makeup | Mens Grooming
Beauty

CAROLHAYES
MANAGEMENT
CREATIVE ARTIST & STYLE MANAGEMENT

020 7482 1555

www.carolhayesmanagement.co.uk



Kenny Leung

Makeup Artist | Hair & Makeup | Mens Grooming
Beauty

CAROL HAYES
MANAGEMENT
CREATIVE ARTIST & STYLE MANAGEMENT

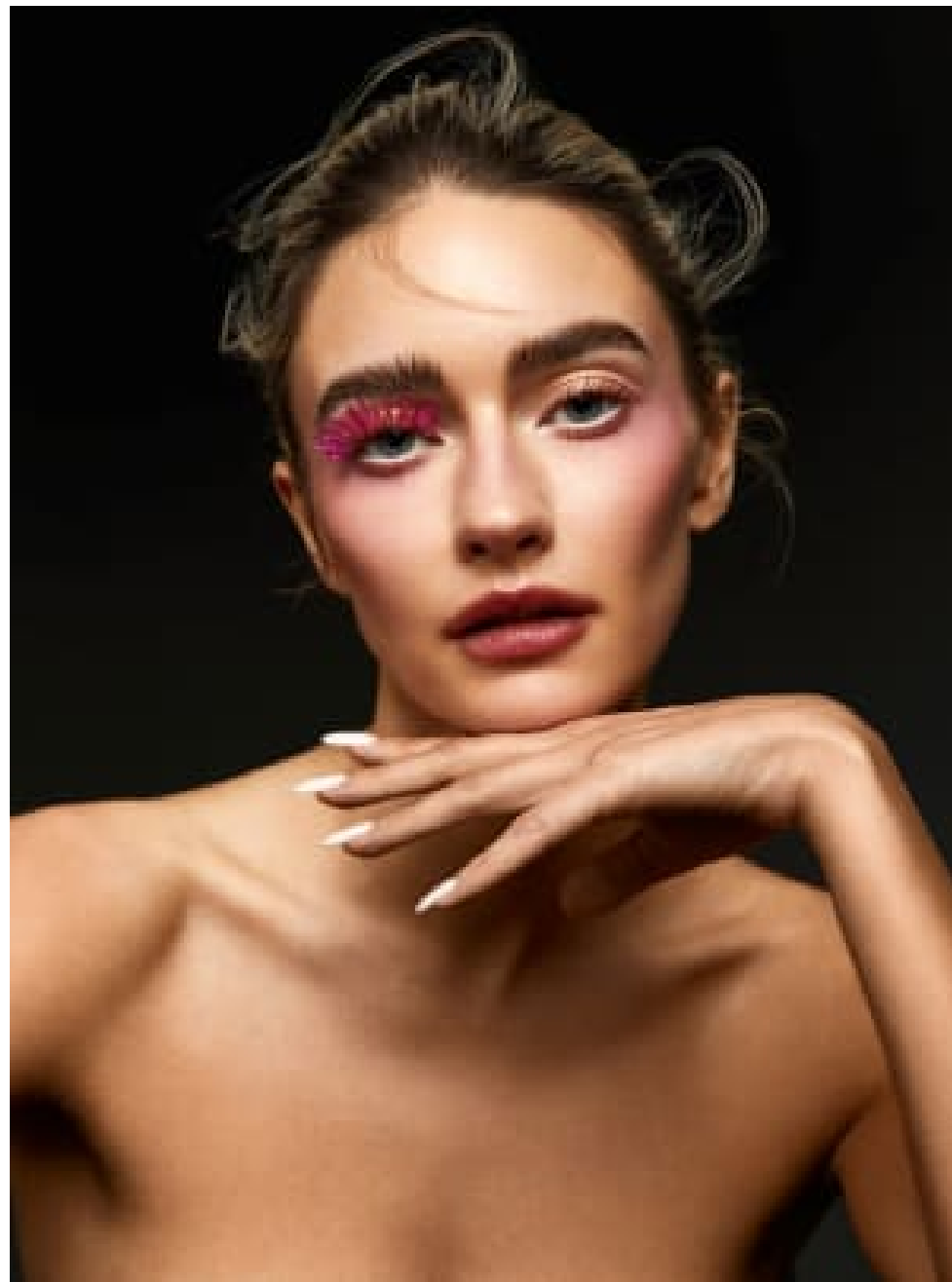
020 7482 1555

www.carolhayesmanagement.co.uk



Kenny Leung

Makeup Artist | Hair & Makeup | Mens Grooming
Beauty



CAROL HAYES
MANAGEMENT
CREATIVE ARTIST & STYLE MANAGEMENT

020 7482 1555

www.carolhayesmanagement.co.uk



Kenny Leung

Makeup Artist | Hair & Makeup | Mens Grooming
Beauty

CAROLHAYES
MANAGEMENT
CREATIVE ARTIST & STYLE MANAGEMENT

020 7482 1555

www.carolhayesmanagement.co.uk



Kenny Leung

Makeup Artist | Hair & Makeup | Mens Grooming
 Beauty

CAROL HAYES
MANAGEMENT
 CREATIVE ARTIST & STYLE MANAGEMENT

020 7482 1555

www.carolhayesmanagement.co.uk

Face:

Embryolisse Lait-Crème Concentré
 Multi-Purpose Moisturiser
 Giorgio Armani Luminous Silk Foundation
 Tarte Shape Tape Ultra Creamy Concealer

Cheeks:

Clinique Powder Pop Flower Bronzer
 Rare Beauty Soft Pinch Liquid Blush in Happy

Brows:

Anastasia Beverly Hills Brow Pen

Eyes:

Morphe 2 Glass Pop Face & Eye
 Hourglass Unlocked Instant
 Extensions Mascara

Lips:

Charlotte Tilbury Lip Cheat in Pillow Talk
 Charlotte Tilbury Super Star Lips in Pillow Talk

Face:

Glow Recipe Plum Plump Hyaluronic Cream
 Mac Cosmetics Studio Fix Every Wear All Over
 Face Pen
 Tarte Shape Tape Ultra Creamy Concealer

Cheeks:

Hourglass Ambient Lighting Bronzer
 Rare Beauty Stay Vulnerable Melting Blush in
 Nearly Natural

Brows:

Benefit Cosmetics Fluff Up Brow Wax

Eyes:

Morphe 2 Glass Pop Face & Eye
 Hourglass Caution Extreme Lash Mascara

Lips:

Charlotte Tilbury Lip Cheat in Pillow Talk
 Nudeskin Magnetic Lip Plush Paint in Fresh Pip



Kenny Leung

Makeup Artist | Hair & Makeup | Mens Grooming
 Beauty

CAROL HAYES
MANAGEMENT
 CREATIVE ARTIST & STYLE MANAGEMENT

020 7482 1555

www.carolhayesmanagement.co.uk



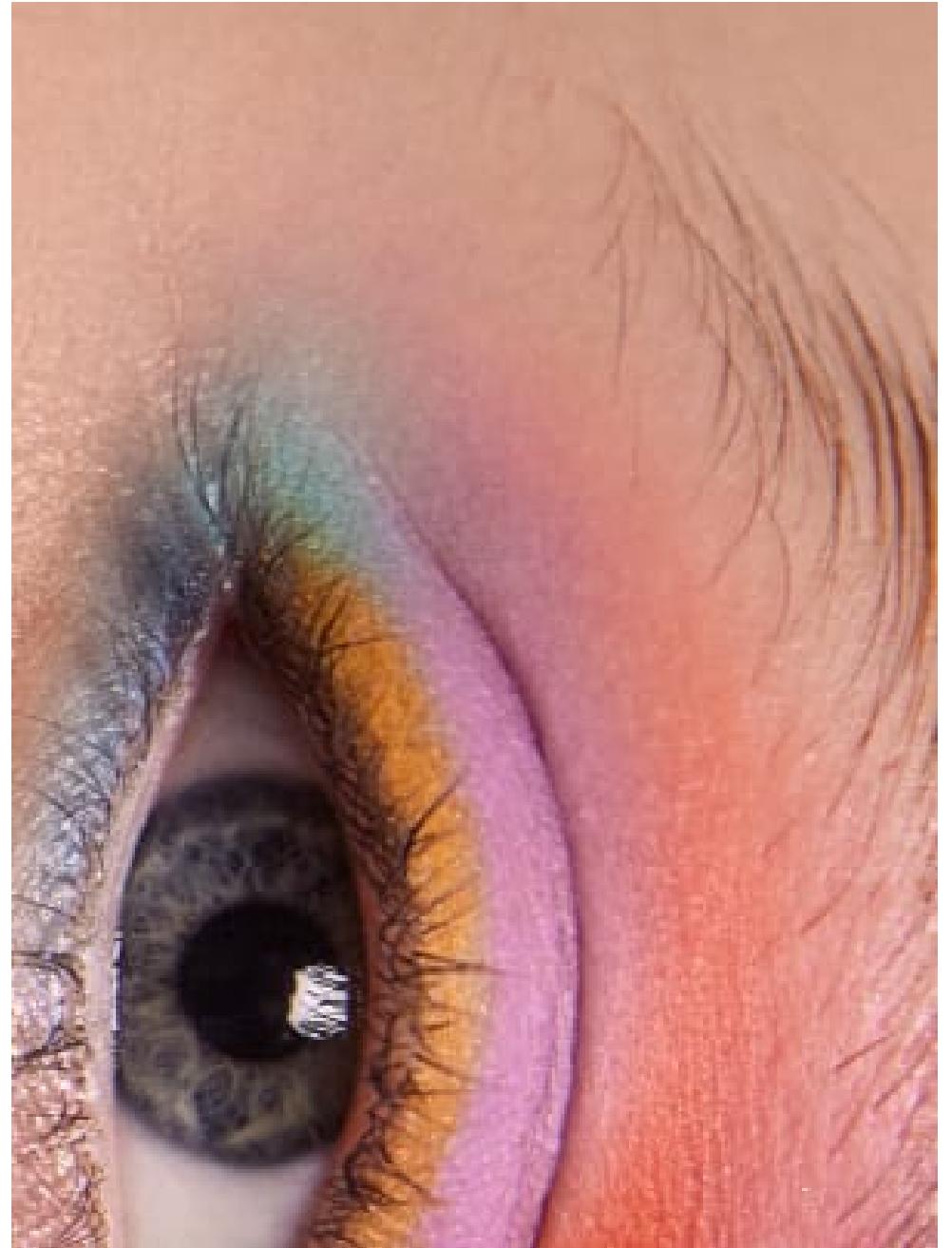
Kenny Leung

Makeup Artist | Hair & Makeup | Mens Grooming
Beauty

CAROL HAYES
MANAGEMENT
CREATIVE ARTIST & STYLE MANAGEMENT

020 7482 1555

www.carolhayesmanagement.co.uk



Kenny Leung

Makeup Artist | Hair & Makeup | Mens Grooming
Beauty

CAROL HAYES
MANAGEMENT
CREATIVE ARTIST & STYLE MANAGEMENT

020 7482 1555

www.carolhayesmanagement.co.uk

Cable

magazine



Kenny Leung

Makeup Artist | Hair & Makeup | Mens Grooming
Beauty

CAROL HAYES
MANAGEMENT
CREATIVE ARTIST & STYLE MANAGEMENT

Cable

magazine



020 7482 1555

www.carolhayesmanagement.co.uk

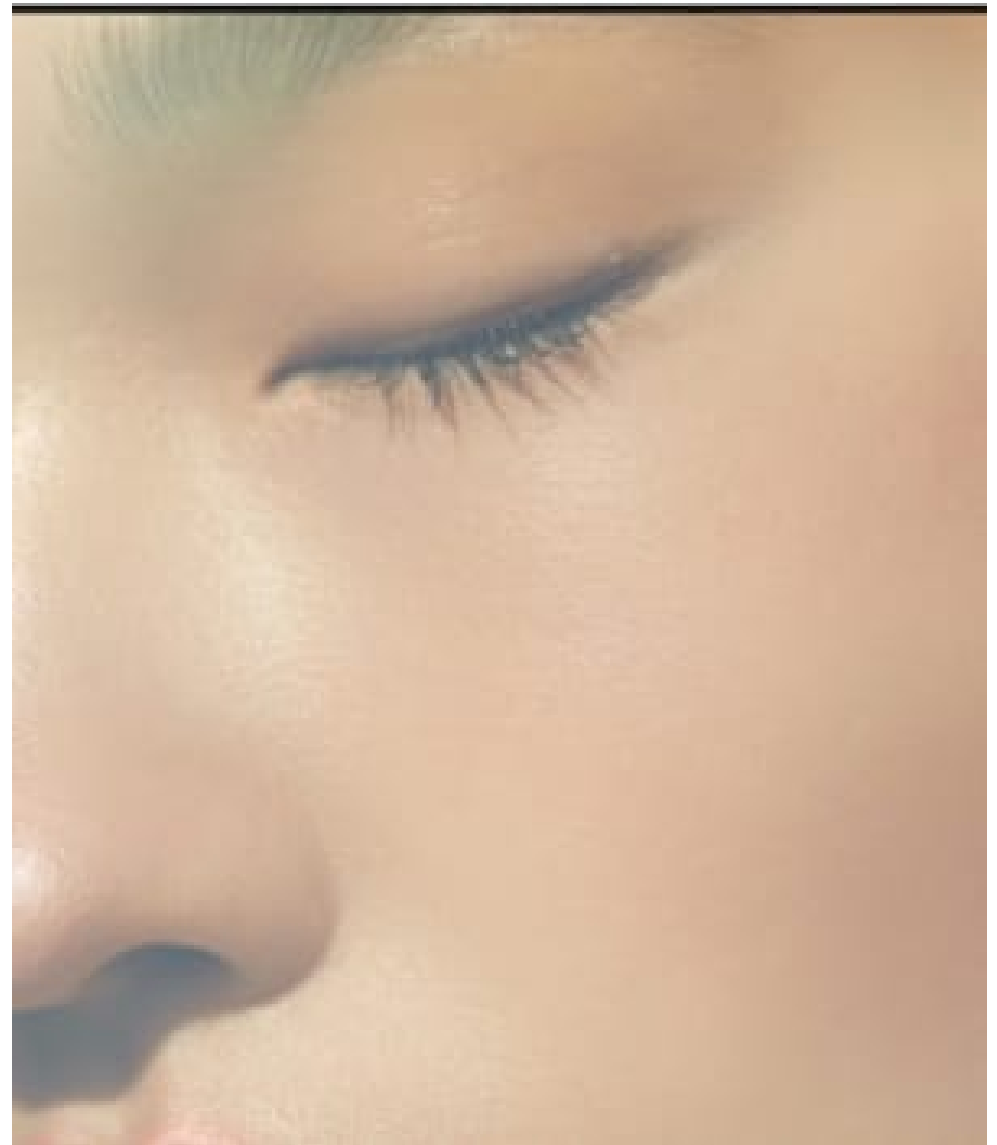
Cable

magazine



Cable

magazine



Kenny Leung

Makeup Artist | Hair & Makeup | Mens Grooming
Beauty

CAROL HAYES
MANAGEMENT
CREATIVE ARTIST & STYLE MANAGEMENT

020 7482 1555

www.carolhayesmanagement.co.uk



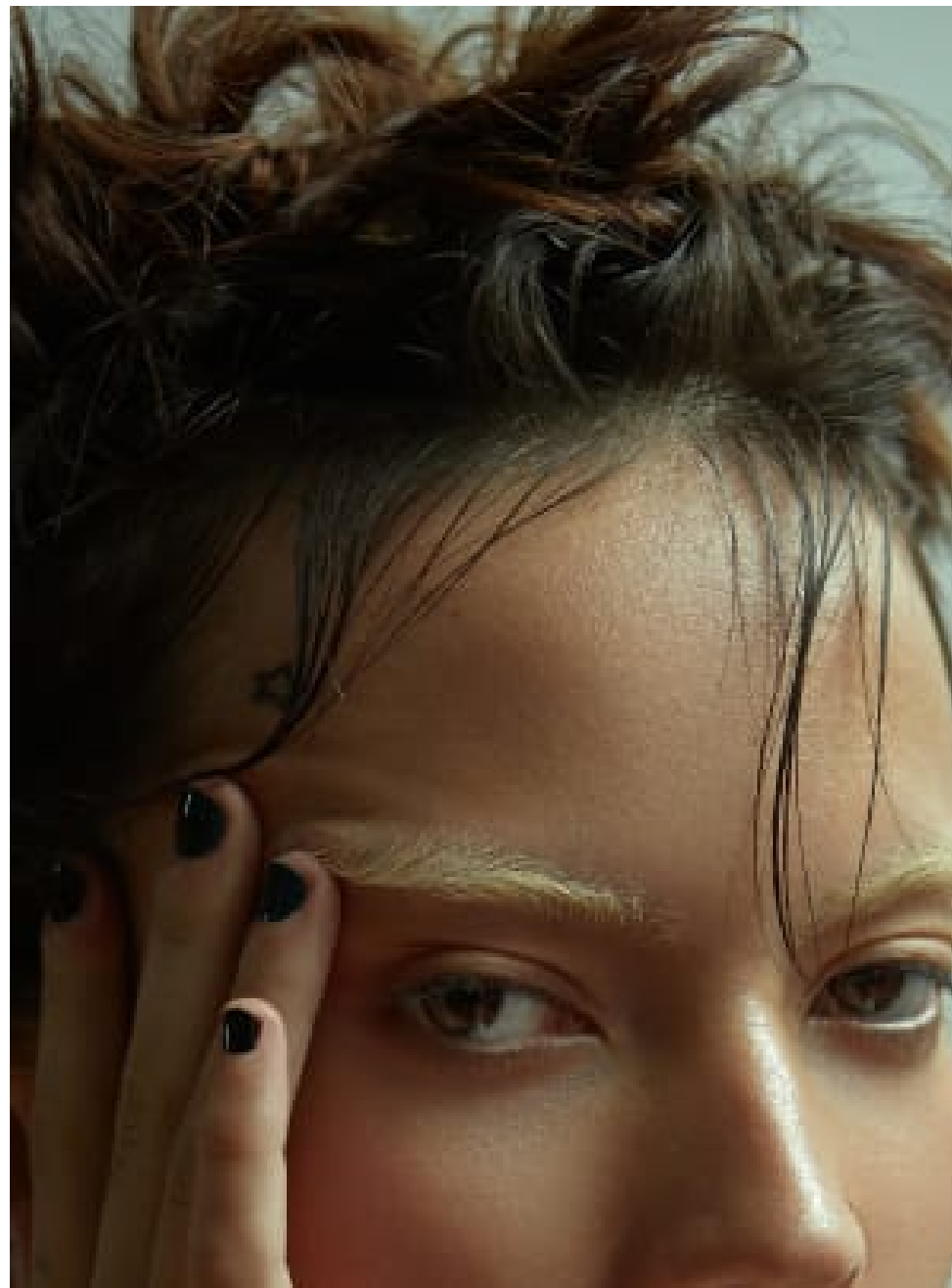
Kenny Leung

Makeup Artist | Hair & Makeup | Mens Grooming
Beauty

CAROL HAYES
MANAGEMENT
CREATIVE ARTIST & STYLE MANAGEMENT

020 7482 1555

www.carolhayesmanagement.co.uk



Kenny Leung

Makeup Artist | Hair & Makeup | Mens Grooming
Beauty

CAROL HAYES
MANAGEMENT
CREATIVE ARTIST & STYLE MANAGEMENT

020 7482 1555

www.carolhayesmanagement.co.uk



Kenny Leung

Makeup Artist | Hair & Makeup | Mens Grooming
Beauty

CAROL HAYES
MANAGEMENT
CREATIVE ARTIST & STYLE MANAGEMENT

020 7482 1555

www.carolhayesmanagement.co.uk



Kenny Leung

Makeup Artist | Hair & Makeup | Mens Grooming
Beauty

CAROL HAYES
MANAGEMENT
CREATIVE ARTIST & STYLE MANAGEMENT

020 7482 1555

www.carolhayesmanagement.co.uk



Kenny Leung

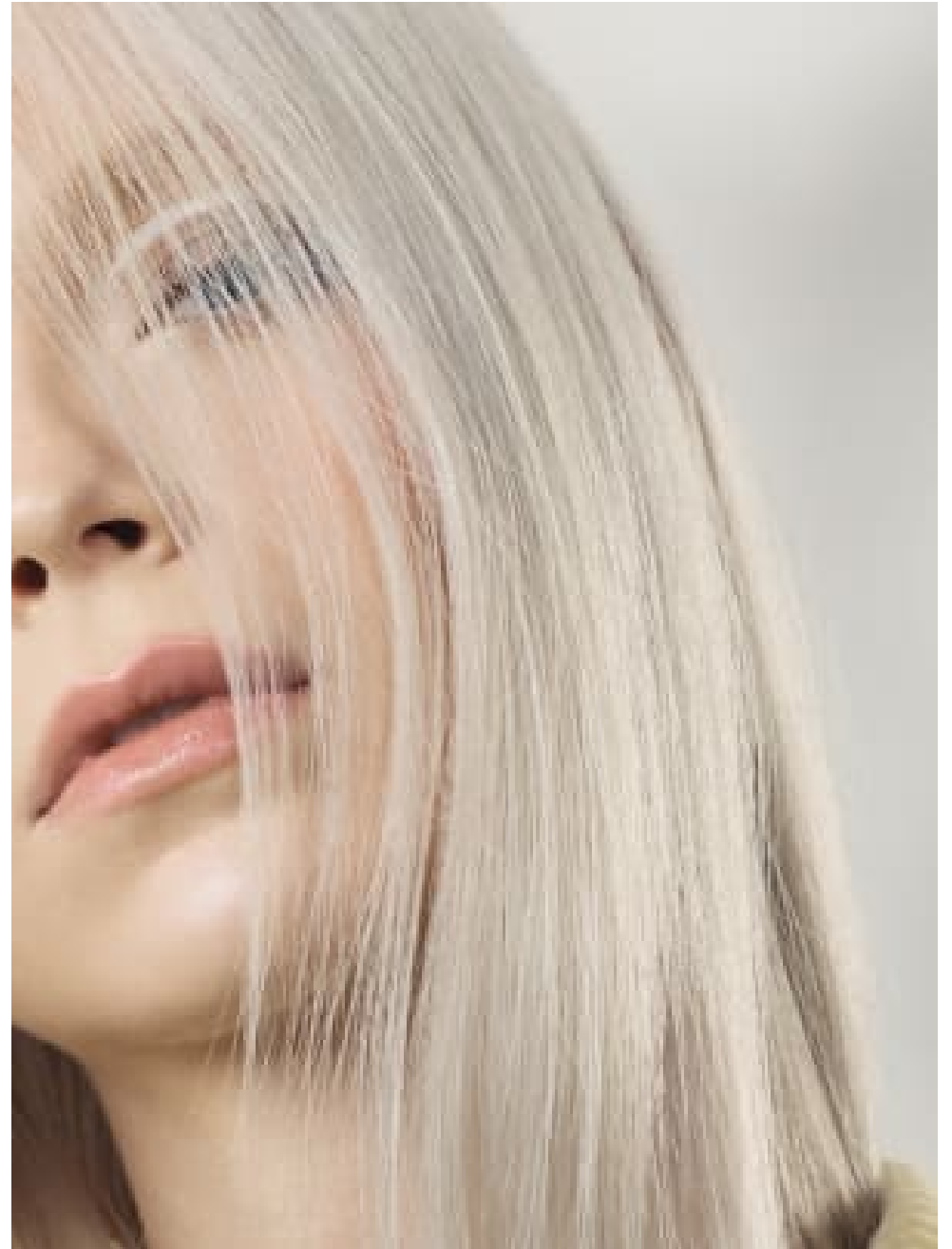
Makeup Artist | Hair & Makeup | Mens Grooming
Beauty

CAROL HAYES
MANAGEMENT
CREATIVE ARTIST & STYLE MANAGEMENT



020 7482 1555

www.carolhayesmanagement.co.uk



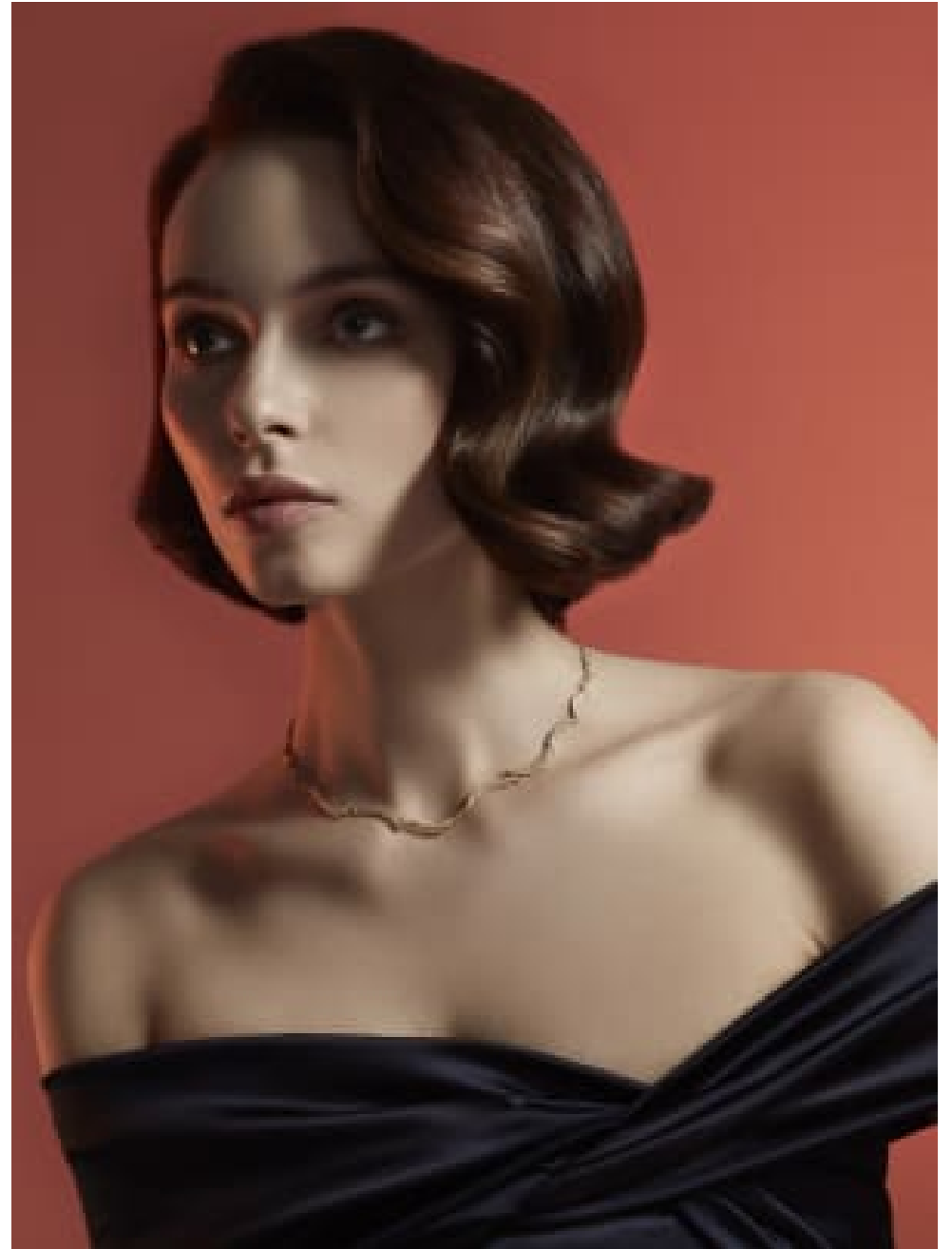
Kenny Leung

Makeup Artist | Hair & Makeup | Mens Grooming
Beauty

CAROL HAYES
MANAGEMENT
CREATIVE ARTIST & STYLE MANAGEMENT

020 7482 1555

www.carolhayesmanagement.co.uk



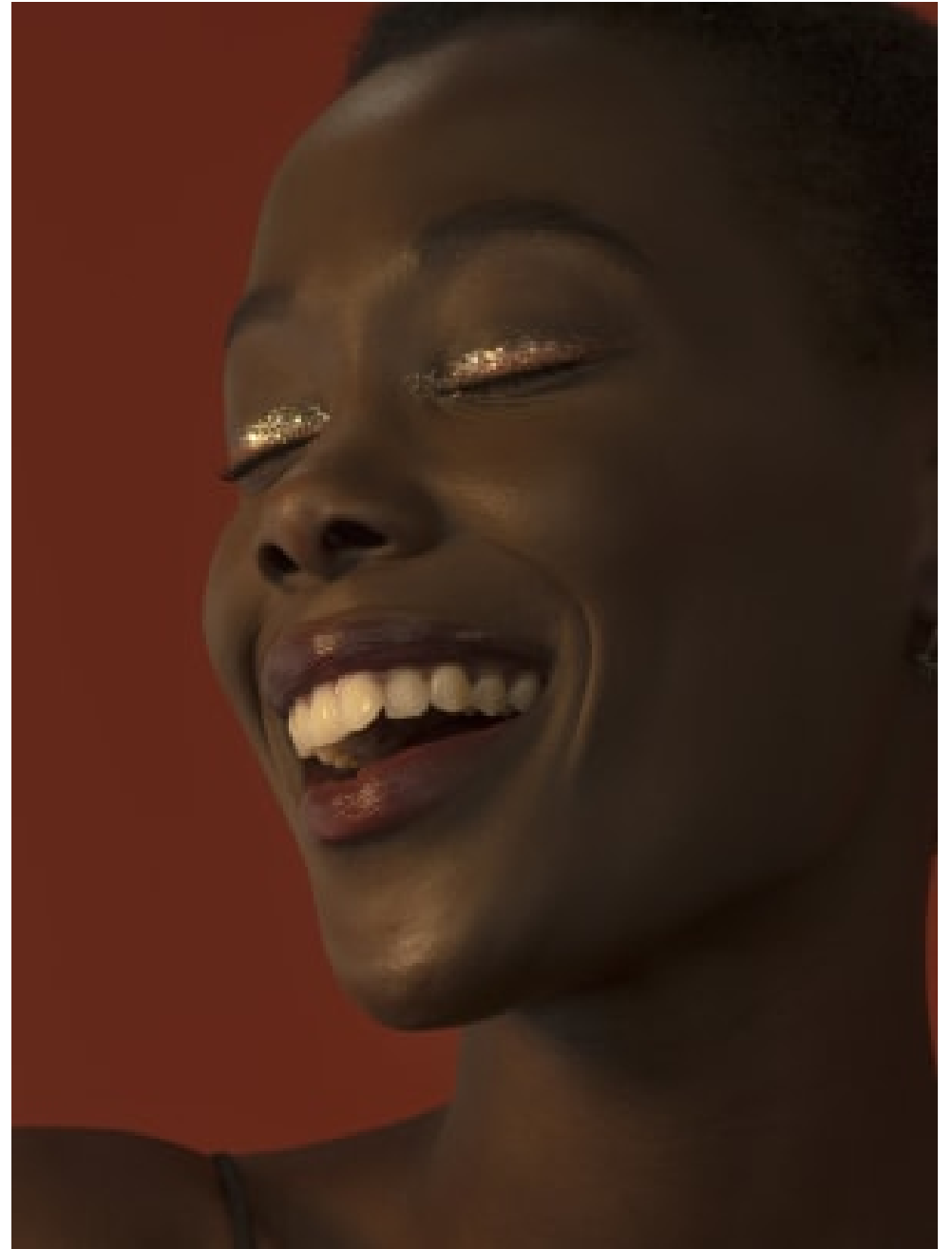
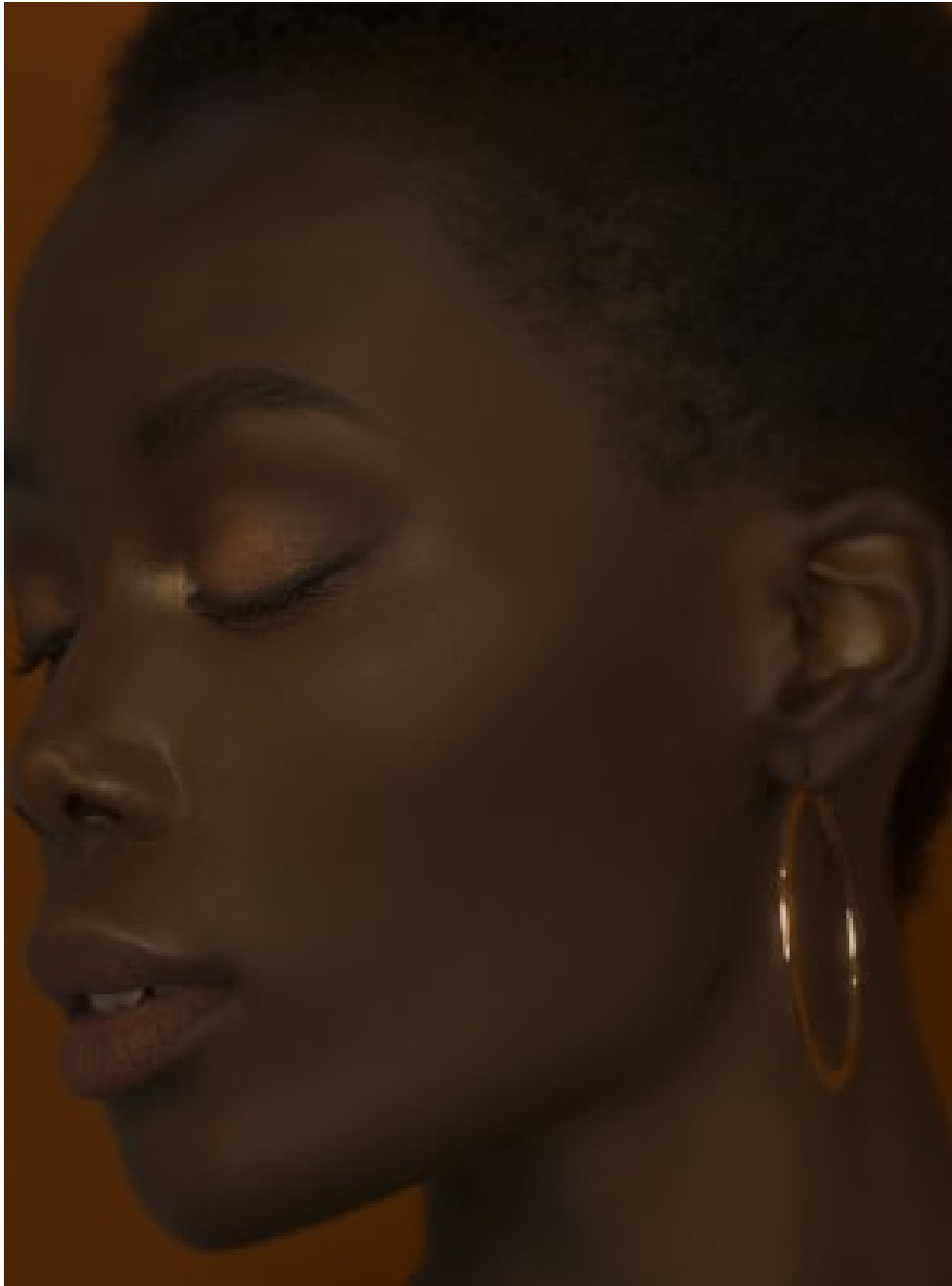
Kenny Leung

Makeup Artist | Hair & Makeup | Mens Grooming
Beauty

CAROL HAYES
MANAGEMENT
CREATIVE ARTIST & STYLE MANAGEMENT

020 7482 1555

www.carolhayesmanagement.co.uk



Kenny Leung

Makeup Artist | Hair & Makeup | Mens Grooming
Beauty

CAROLHAYES
MANAGEMENT
CREATIVE ARTIST & STYLE MANAGEMENT

020 7482 1555

www.carolhayesmanagement.co.uk



70 la botanica



Makeup Artist and Hair Stylist: Kenny Leung (kenny.leung@carolhayesmanagement.com)
 Models: Tania (tania@carolhayesmanagement.com), Chloe (chloe@carolhayesmanagement.com), Wan (wan@carolhayesmanagement.com), Wendy (wendy@carolhayesmanagement.com)
 Hair Stylist: Sophia (sophia@carolhayesmanagement.com), M.K. (mk@carolhayesmanagement.com)
 Photography: Kenny Leung (kenny.leung@carolhayesmanagement.com)

la botanica 71

Kenny Leung

Makeup Artist | Hair & Makeup | Mens Grooming
 Beauty

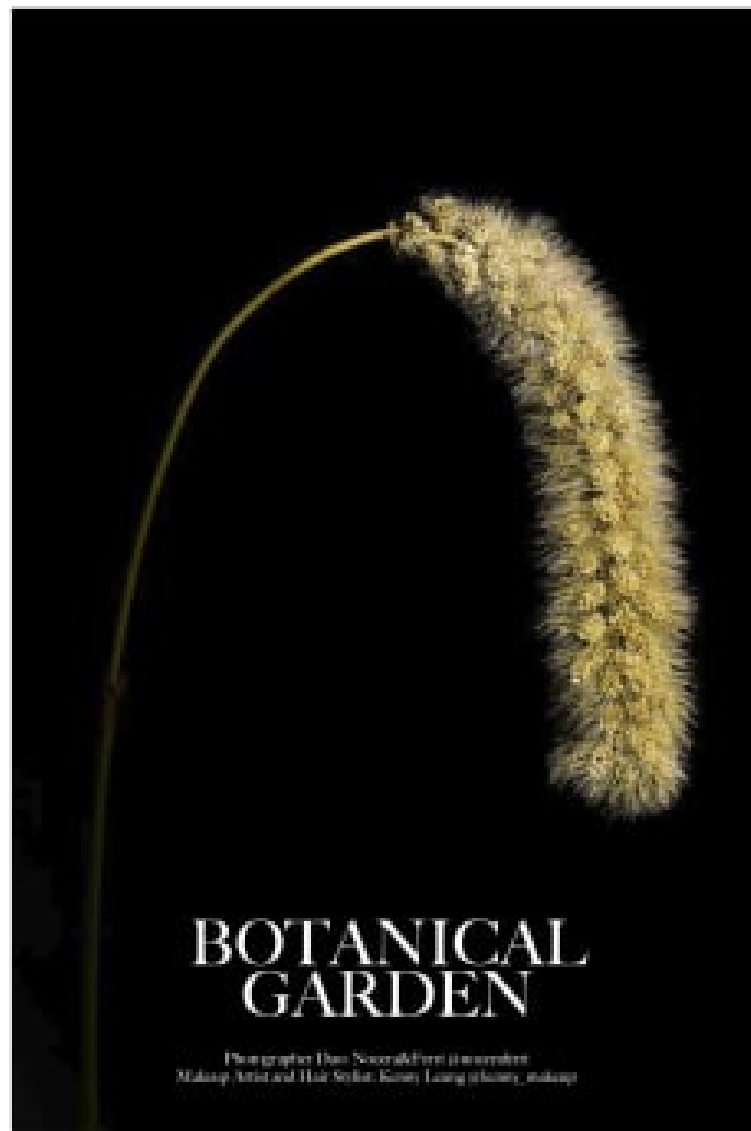
CAROL HAYES
MANAGEMENT
 CREATIVE ARTIST & STYLE MANAGEMENT

020 7482 1555

www.carolhayesmanagement.co.uk



04 la botanica



la botanica 05

Kenny Leung

Makeup Artist | Hair & Makeup | Mens Grooming
Beauty

CAROL HAYES
MANAGEMENT
CREATIVE ARTIST & STYLE MANAGEMENT

020 7482 1555

www.carolhayesmanagement.co.uk



Kenny Leung

Makeup Artist | Hair & Makeup | Mens Grooming
Beauty

CAROL HAYES
MANAGEMENT
CREATIVE ARTIST & STYLE MANAGEMENT

020 7482 1555

www.carolhayesmanagement.co.uk



Kenny Leung

Makeup Artist | Hair & Makeup | Mens Grooming
Beauty

CAROL HAYES
MANAGEMENT
CREATIVE ARTIST & STYLE MANAGEMENT

020 7482 1555

www.carolhayesmanagement.co.uk



Kenny Leung

Makeup Artist | Hair & Makeup | Mens Grooming
Beauty

CAROL HAYES
MANAGEMENT
CREATIVE ARTIST & STYLE MANAGEMENT

020 7482 1555

www.carolhayesmanagement.co.uk



© Kenny Leung 2018



Kenny Leung

Makeup Artist | Hair & Makeup | Mens Grooming
Beauty

CAROL HAYES
MANAGEMENT
CREATIVE ARTIST & STYLE MANAGEMENT

020 7482 1555

www.carolhayesmanagement.co.uk