

Trearddur Bay Wales

A large austere house in neo-Georgian style, Trearddur Bay is in an elevated position on a rocky promontory, set back from the South West side of Lon Isallt and on the coastline overlooking Porth yr Afon. The house is set on a large plot that encompasses its own private road, large driveway/parking area, private beach, large field with derelict walled garden and second headland.





Trearddur Bay Wales

A large austere house in neo-Georgian style, Trearddur Bay is in an elevated position on a rocky promontory set back from the South West side of Lon Isallt and on the coastline overlooking Porth yr Afon. The house is set on a large plot that encompasses its own private road, large driveway/parking area, private beach, large field with derelict walled garden and second headland.

CAROL HAYES
MANAGEMENT
CREATIVE ARTIST & STYLE MANAGEMENT

020 7482 1555

www.carolhayesmanagement.co.uk



Trearddur Bay Wales

A large austere house in neo-Georgian style, Trearddur Bay is in an elevated position on a rocky promontory set back from the South West side of Lon Isallt and on the coastline overlooking Porth yr Afon. The house is set on a large plot that encompasses its own private road, large driveway/parking area, private beach, large field with derelict walled garden and second headland.

CAROL HAYES
MANAGEMENT
CREATIVE ARTIST & STYLE MANAGEMENT

020 7482 1555

www.carolhayesmanagement.co.uk



Trearddur Bay Wales

A large austere house in neo-Georgian style, Trearddur Bay is in an elevated position on a rocky promontory, set back from the South West side of Lon Isallt and on the coastline overlooking Porth yr Afon. The house is set on a large plot that encompasses its own private road, large driveway/parking area, private beach, large field with derelict walled garden and second headland.

CAROL HAYES
MANAGEMENT
CREATIVE ARTIST & STYLE MANAGEMENT

020 7482 1555

www.carolhayesmanagement.co.uk



Trearddur Bay Wales

A large austere house in neo-Georgian style, Trearddur Bay is in an elevated position on a rocky promontory, set back from the South West side of Lon Isallt and on the coastline overlooking Porth yr Afon. The house is set on a large plot that encompasses its own private road, large driveway/parking area, private beach, large field with derelict walled garden and second headland.

CAROL HAYES
MANAGEMENT
CREATIVE ARTIST & STYLE MANAGEMENT

020 7482 1555

www.carolhayesmanagement.co.uk



Trearddur Bay Wales

A large austere house in neo-Georgian style, Trearddur Bay is in an elevated position on a rocky promontory, set back from the South West side of Lon Isallt and on the coastline overlooking Porth yr Afon. The house is set on a large plot that encompasses its own private road, large driveway/parking area, private beach, large field with derelict walled garden and second headland.

CAROL HAYES
MANAGEMENT
CREATIVE ARTIST & STYLE MANAGEMENT

020 7482 1555

www.carolhayesmanagement.co.uk



Trearddur Bay Wales

A large austere house in neo-Georgian style, Trearddur Bay is in an elevated position on a rocky promontory, set back from the South West side of Llan Isallt and on the coastline overlooking Porth yr Afon. The house is set on a large plot that encompasses its own private road, large driveway/parking area, private beach, large field with derelict walled garden and second headland.

CAROL HAYES
MANAGEMENT
CREATIVE ARTIST & STYLE MANAGEMENT

020 7482 1555

www.carolhayesmanagement.co.uk



Trearddur Bay Wales

A large austere house in neo-Georgian style, Trearddur Bay is in an elevated position on a rocky promontory, set back from the South West side of Llan Isallt and on the coastline overlooking Porth yr Afon. The house is set on a large plot that encompasses its own private road, large driveway/parking area, private beach, large field with derelict walled garden and second headland.

CAROL HAYES
MANAGEMENT
CREATIVE ARTIST & STYLE MANAGEMENT

020 7482 1555

www.carolhayesmanagement.co.uk



Trearddur Bay Wales

A large austere house in neo-Georgian style, Trearddur Bay is in an elevated position on a rocky promontory, set back from the South West side of Llan Isallt and on the coastline overlooking Porth yr Afon. The house is set on a large plot that encompasses its own private road, large driveway/parking area, private beach, large field with derelict walled garden and second headland.

CAROL HAYES
MANAGEMENT
CREATIVE ARTIST & STYLE MANAGEMENT

020 7482 1555

www.carolhayesmanagement.co.uk



Trearddur Bay Wales

A large austere house in neo-Georgian style, Trearddur Bay is in an elevated position on a rocky promontory, set back from the South West side of Llan Isallt and on the coastline overlooking Porth yr Afon. The house is set on a large plot that encompasses its own private road, large driveway/parking area, private beach, large field with derelict walled garden and second headland.

CAROL HAYES
MANAGEMENT
CREATIVE ARTIST & STYLE MANAGEMENT

020 7482 1555

www.carolhayesmanagement.co.uk



Trearddur Bay Wales

A large austere house in neo-Georgian style, Trearddur Bay is in an elevated position on a rocky promontory, set back from the South West side of Lon Isallt and on the coastline overlooking Porth yr Afon. The house is set on a large plot that encompasses its own private road, large driveway/parking area, private beach, large field with derelict walled garden and second headland.

CAROL HAYES
MANAGEMENT
CREATIVE ARTIST & STYLE MANAGEMENT

020 7482 1555

www.carolhayesmanagement.co.uk



Trearddur Bay Wales

A large austere house in neo-Georgian style, Trearddur Bay is in an elevated position on a rocky promontory, set back from the South West side of Lon Isallt and on the coastline overlooking Porth yr Afon. The house is set on a large plot that encompasses its own private road, large driveway/parking area, private beach, large field with derelict walled garden and second headland.

CAROL HAYES
MANAGEMENT
CREATIVE ARTIST & STYLE MANAGEMENT

020 7482 1555

www.carolhayesmanagement.co.uk



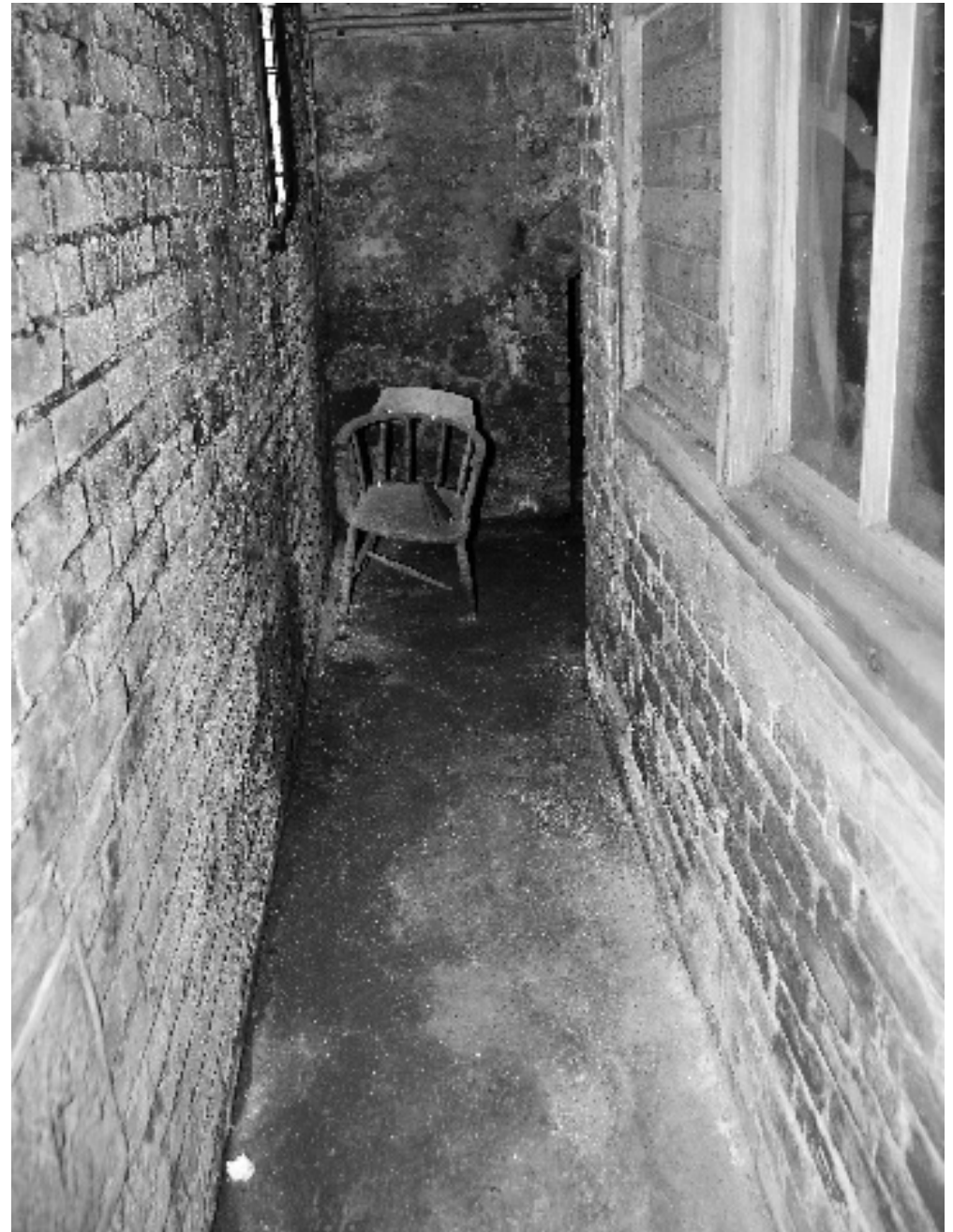
Trearddur Bay Wales

A large austere house in neo-Georgian style, Trearddur Bay is in an elevated position on a rocky promontory, set back from the South West side of Llan Isallt and on the coastline overlooking Porth yr Afon. The house is set on a large plot that encompasses its own private road, large driveway/parking area, private beach, large field with derelict walled garden and second headland.

CAROL HAYES
MANAGEMENT
CREATIVE ARTIST & STYLE MANAGEMENT

020 7482 1555

www.carolhayesmanagement.co.uk



Trearddur Bay Wales

A large austere house in neo-Georgian style, Trearddur Bay is in an elevated position on a rocky promontory, set back from the South West side of Llan Isallt and on the coastline overlooking Porth yr Afon. The house is set on a large plot that encompasses its own private road, large driveway/parking area, private beach, large field with derelict walled garden and second headland.

CAROL HAYES
MANAGEMENT
CREATIVE ARTIST & STYLE MANAGEMENT

020 7482 1555

www.carolhayesmanagement.co.uk



Trearddur Bay Wales

A large austere house in neo-Georgian style, Trearddur Bay is in an elevated position on a rocky promontory set back from the South West side of Lon Isallt and on the coastline overlooking Porth yr Afon. The house is set on a large plot that encompasses its own private road, large driveway/parking area, private beach, large field with derelict walled garden and second headland.

CAROL HAYES
MANAGEMENT
CREATIVE ARTIST & STYLE MANAGEMENT

020 7482 1555

www.carolhayesmanagement.co.uk



Trearddur Bay Wales

A large austere house in neo-Georgian style, Trearddur Bay is in an elevated position on a rocky promontory, set back from the South West side of Llan Isallt and on the coastline overlooking Porth yr Afon. The house is set on a large plot that encompasses its own private road, large driveway/parking area, private beach, large field with derelict walled garden and second headland.

CAROL HAYES
MANAGEMENT
CREATIVE ARTIST & STYLE MANAGEMENT

020 7482 1555

www.carolhayesmanagement.co.uk



Trearddur Bay Wales

A large austere house in neo-Georgian style, Trearddur Bay is in an elevated position on a rocky promontory, set back from the South West side of Lon Isallt and on the coastline overlooking Porth yr Afon. The house is set on a large plot that encompasses its own private road, large driveway/parking area, private beach, large field with derelict walled garden and second headland.

CAROL HAYES
MANAGEMENT
CREATIVE ARTIST & STYLE MANAGEMENT

020 7482 1555

www.carolhayesmanagement.co.uk



Trearddur Bay Wales

A large austere house in neo-Georgian style, Trearddur Bay is in an elevated position on a rocky promontory set back from the South West side of Lon Isallt and on the coastline overlooking Porth yr Afon. The house is set on a large plot that encompasses its own private road, large driveway/parking area, private beach, large field with derelict walled garden and second headland.

CAROL HAYES
MANAGEMENT
CREATIVE ARTIST & STYLE MANAGEMENT

020 7482 1555

www.carolhayesmanagement.co.uk



Trearddur Bay Wales

A large austere house in neo-Georgian style, Trearddur Bay is in an elevated position on a rocky promontory set back from the South West side of Lon Isallt and on the coastline overlooking Porth yr Afon. The house is set on a large plot that encompasses its own private road, large driveway/parking area, private beach, large field with derelict walled garden and second headland.

CAROL HAYES
MANAGEMENT
CREATIVE ARTIST & STYLE MANAGEMENT

020 7482 1555

www.carolhayesmanagement.co.uk