

Byre Barn Herefordshire

Beautiful Grade2 listed barn which has been recently renovated. It is approximately 300 square metres. Features a large hallway, spacious utility room, open plan living, dining room and kitchen, 5 bedrooms and 2 bathrooms, 2 galleried landings, high ceilings, many vaulted and a large glass floor to ceiling window. The property is extremely light. It has a large garden which is a work in progress to be completed in time for the Summer. Ample parking.





Byre Barn Herefordshire

Beautiful Grade2 listed barn which has been recently renovated. It is approximately 300 square meters. Features a large hallway, spacious utility room, open plan living, dining room and kitchen, 5 bedrooms and 2 bathrooms, 2 galleried landings, high ceilings, many vaulted and a large glass floor to ceiling window. The property is extremely light. It has a large garden which is a work in progress to be completed in time for the Summer. Ample parking.

CAROL HAYES
MANAGEMENT
PROPERTY & ESTATE MANAGEMENT

020 7482 1555

www.carolhayesmanagement.co.uk



Byre Barn Herefordshire

Beautiful Grade2 listed barn which has been recently renovated. It is approximately 300 square metres, features a large hallway, spacious utility room, open plan living, dining room and kitchen, 5 bedrooms and 2 bathrooms, 2 galleried landings, high ceilings, many vaulted and a large glass floor to ceiling window. The property is extremely light. It has a large garden which is a work in progress to be completed in time for the Summer. Ample parking.

CAROL HAYES
MANAGEMENT

020 7482 1555

www.carolhayesmanagement.co.uk



Byre Barn Herefordshire

Beautiful Grade2 listed barn which has been recently renovated. It is approximately 300 square metres, features a large hallway, spacious utility room, open plan living, dining room and kitchen, 5 bedrooms and 2 bathrooms, 2 galleried landings, high ceilings, many vaulted and a large glass floor to ceiling window. The property is extremely light. It has a large garden which is a work in progress to be completed in time for the Summer. Ample parking.

CAROL HAYES
MANAGEMENT
PROPERTY & MANAGEMENT

020 7482 1555

www.carolhayesmanagement.co.uk



Byre Barn Herefordshire

Beautiful Grade2 listed barn which has been recently renovated. It is approximately 300 square metres, features a large hallway, spacious utility room, open plan living, dining room and kitchen, 5 bedrooms and 2 bathrooms, 2 galleried landings, high ceilings, many vaulted and a large glass floor to ceiling window. The property is extremely light. It has a large garden which is a work in progress to be completed in time for the Summer. Ample parking.

CAROL HAYES
MANAGEMENT
PROPERTY & INVESTMENT

020 7482 1555

www.carolhayesmanagement.co.uk



Byre Barn Herefordshire

Beautiful Grade2 listed barn which has been recently renovated. It is approximately 300 square metres, features a large hallway, spacious utility room, open plan living, dining room and kitchen, 5 bedrooms and 2 bathrooms, 2 galleried landings, high ceilings, many vaulted and a large glass floor to ceiling window. The property is extremely light. It has a large garden which is a work in progress to be completed in time for the Summer. Ample parking.

CAROL HAYES
MANAGEMENT
PROPERTY & MANAGEMENT

020 7482 1555

www.carolhayesmanagement.co.uk



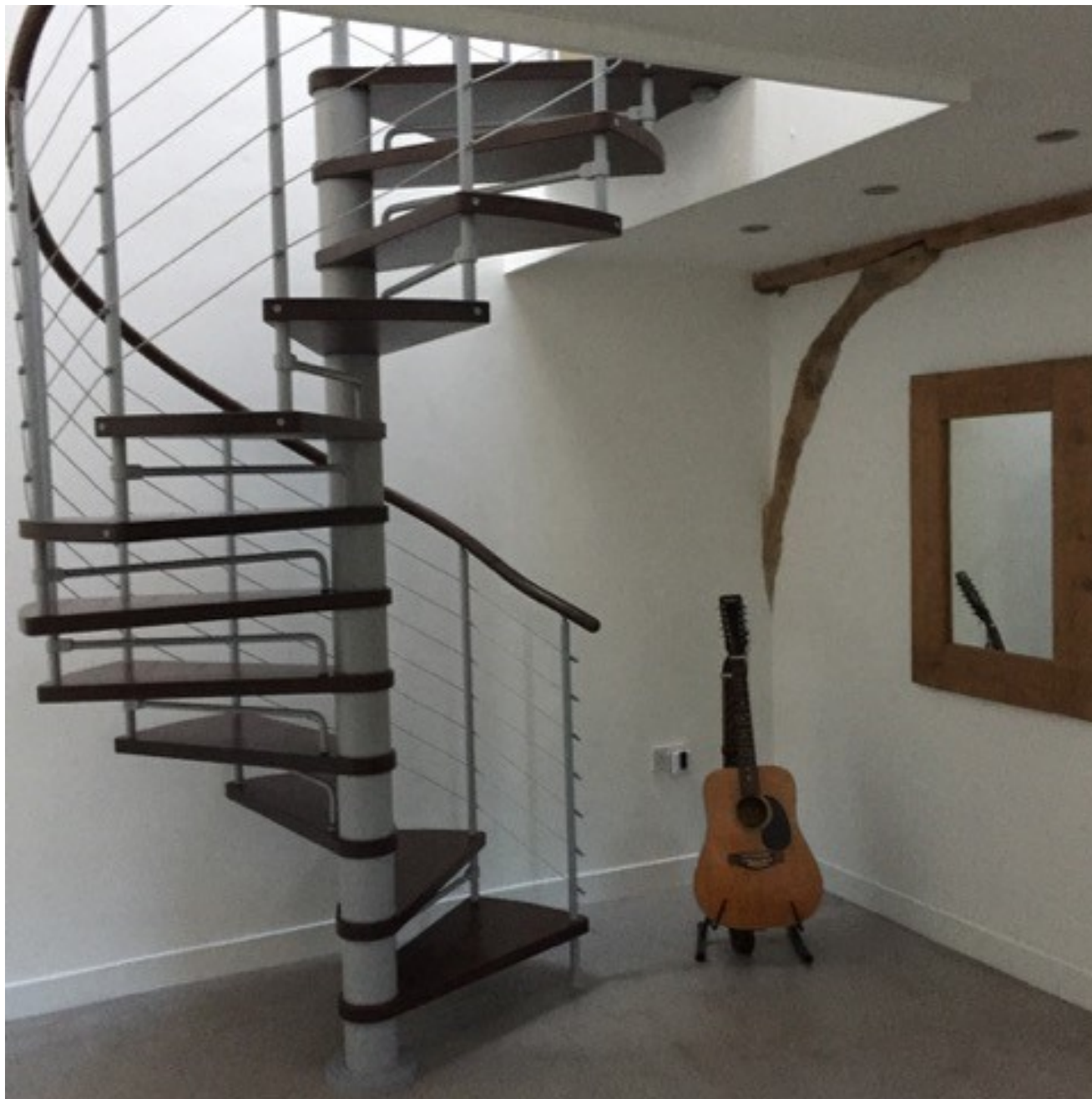
Byre Barn Herefordshire

Beautiful Grade2 listed barn which has been recently renovated. It is approximately 300 square metres. Features a large hallway, spacious utility room, open plan living, dining room and kitchen, 5 bedrooms and 2 bathrooms, 2 galleried landings, high ceilings, many vaulted and a large glass floor to ceiling window. The property is extremely light. It has a large garden which is a work in progress to be completed in time for the Summer. Ample parking.

CAROL HAYES
MANAGEMENT
PROPERTY & ESTATE MANAGEMENT

020 7482 1555

www.carolhayesmanagement.co.uk



Byre Barn Herefordshire

Beautiful Grade2 listed barn which has been recently renovated. It is approximately 300 square metres, features a large hallway, spacious utility room, open plan living, dining room and kitchen, 5 bedrooms and 2 bathrooms, 2 galleried landings, high ceilings, many vaulted and a large glass floor to ceiling window. The property is extremely light. It has a large garden which is a work in progress to be completed in time for the Summer. Ample parking.

CAROL HAYES
MANAGEMENT

020 7482 1555

www.carolhayesmanagement.co.uk



Byre Barn Herefordshire

Beautiful Grade2 listed barn which has been recently renovated. It is approximately 300 square metres. Features a large hallway, spacious utility room, open plan living, dining room and kitchen, 5 bedrooms and 2 bathrooms, 2 galleried landings, high ceilings, many vaulted and a large glass floor to ceiling window. The property is extremely light. It has a large garden which is a work in progress to be completed in time for the Summer. Ample parking.

CAROL HAYES
MANAGEMENT
PROPERTY & ESTATE MANAGEMENT

020 7482 1555

www.carolhayesmanagement.co.uk



Byre Barn Herefordshire

Beautiful Grade2 listed barn which has been recently renovated. It is approximately 300 square metres, features a large hallway, spacious utility room, open plan living, dining room and kitchen, 5 bedrooms and 2 bathrooms, 2 galleried landings, high ceilings, many vaulted and a large glass floor to ceiling window. The property is extremely light. It has a large garden which is a work in progress to be completed in time for the Summer. Ample parking.

CAROL HAYES
MANAGEMENT
PROPERTY MANAGEMENT

020 7482 1555

www.carolhayesmanagement.co.uk



Byre Barn Herefordshire

Beautiful Grade2 listed barn which has been recently renovated. It is approximately 300 square metres, features a large hallway, spacious utility room, open plan living, dining room and kitchen, 5 bedrooms and 2 bathrooms, 2 galleried landings, high ceilings, many vaulted and a large glass floor to ceiling window. The property is extremely light. It has a large garden which is a work in progress to be completed in time for the Summer. Ample parking.

CAROL HAYES
MANAGEMENT

020 7482 1555

www.carolhayesmanagement.co.uk



Byre Barn Herefordshire

Beautiful Grade2 listed barn which has been recently renovated. It is approximately 300 square metres. Features a large hallway, spacious utility room, open plan living, dining room and kitchen, 5 bedrooms and 2 bathrooms, 2 galleried landings, high ceilings, many vaulted and a large glass floor to ceiling window. The property is extremely light. It has a large garden which is a work in progress to be completed in time for the Summer. Ample parking.

CAROL HAYES
MANAGEMENT
PROPERTY & ESTATE MANAGEMENT

020 7482 1555

www.carolhayesmanagement.co.uk



Byre Barn Herefordshire

Beautiful Grade2 listed barn which has been recently renovated. It is approximately 300 square metres, features a large hallway, spacious utility room, open plan living, dining room and kitchen, 5 bedrooms and 2 bathrooms, 2 galleried landings, high ceilings, many vaulted and a large glass floor to ceiling window. The property is extremely light. It has a large garden which is a work in progress to be completed in time for the Summer. Ample parking.

CAROL HAYES
MANAGEMENT
PROPERTY MANAGEMENT

020 7482 1555

www.carolhayesmanagement.co.uk



Byre Barn Herefordshire

Beautiful Grade2 listed barn which has been recently renovated. It is approximately 300 square metres, features a large hallway, spacious utility room, open plan living, dining room and kitchen, 5 bedrooms and 2 bathrooms, 2 galleried landings, high ceilings, many vaulted and a large glass floor to ceiling window. The property is extremely light. It has a large garden which is a work in progress to be completed in time for the Summer. Ample parking.

CAROL HAYES
MANAGEMENT
PROPERTY MANAGEMENT

020 7482 1555

www.carolhayesmanagement.co.uk



Byre Barn Herefordshire

Beautiful Grade2 listed barn which has been recently renovated. It is approximately 300 square metres. Features a large hallway, spacious utility room, open plan living, dining room and kitchen, 5 bedrooms and 2 bathrooms, 2 galleried landings, high ceilings, many vaulted and a large glass floor to ceiling window. The property is extremely light. It has a large garden which is a work in progress to be completed in time for the Summer. Ample parking.

CAROL HAYES
MANAGEMENT
PROPERTY & ESTATE MANAGEMENT

020 7482 1555

www.carolhayesmanagement.co.uk



Byre Barn Herefordshire

Beautiful Grade2 listed barn which has been recently renovated. It is approximately 300 square meters. Features a large hallway, spacious utility room, open plan living, dining room and kitchen, 5 bedrooms and 2 bathrooms, 2 galleried landings, high ceilings, many vaulted and a large glass floor to ceiling window. The property is extremely light. It has a large garden which is a work in progress to be completed in time for the Summer. Ample parking.

CAROL HAYES
MANAGEMENT
PROPERTY & ESTATE MANAGEMENT

020 7482 1555

www.carolhayesmanagement.co.uk



Byre Barn Herefordshire

Beautiful Grade2 listed barn which has been recently renovated. It is approximately 300 square metres, features a large hallway, spacious utility room, open plan living, dining room and kitchen, 5 bedrooms and 2 bathrooms, 2 galleried landings, high ceilings, many vaulted and a large glass floor to ceiling window. The property is extremely light. It has a large garden which is a work in progress to be completed in time for the Summer. Ample parking.

CAROL HAYES
MANAGEMENT
PROPERTY & ESTATE MANAGEMENT

020 7482 1555

www.carolhayesmanagement.co.uk