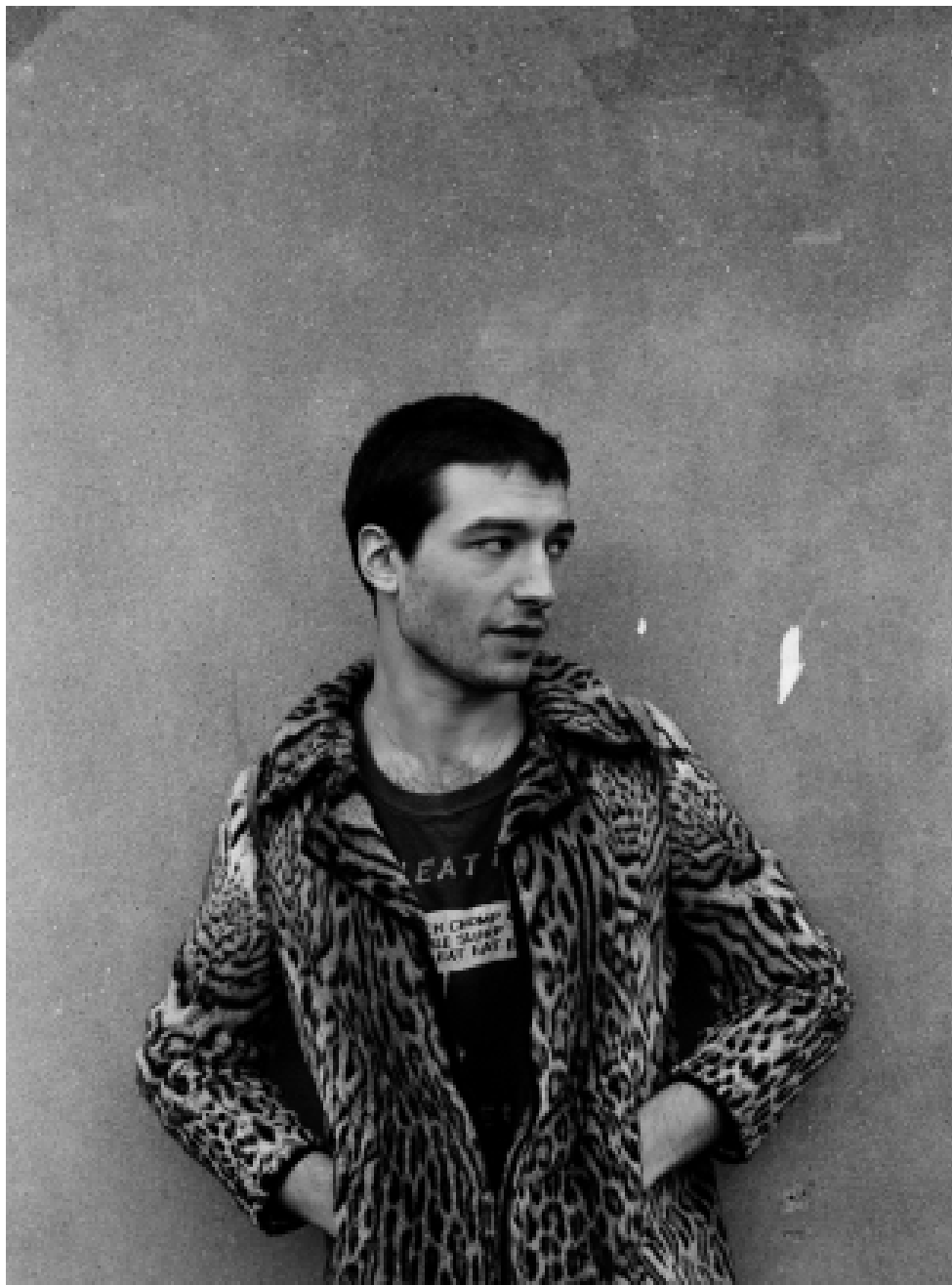


# Aga Dobosz

Makeup Artist

Celebrity





**Aga Dobosz**  
Makeup Artist  
Celebrity



**CAROL HAYES**  
**MANAGEMENT**  
CREATIVE ARTIST & STYLE MANAGEMENT

020 7482 1555

[www.carolhayesmanagement.co.uk](http://www.carolhayesmanagement.co.uk)



**Aga Dobosz**

Makeup Artist  
Celebrity

**CAROL HAYES**  
**MANAGEMENT**  
CREATIVE ARTIST & STYLE MANAGEMENT

020 7482 1555

[www.carolhayesmanagement.co.uk](http://www.carolhayesmanagement.co.uk)



Black velvet brocade jacket with velvet trousers both by MOSCHINO  
in studio created by KATE LADGEMAN, hair and make up with crystal details  
by LOUIS LUDOVIC, all jewelry Jamie's own

**Aga Dobosz**  
Makeup Artist  
Celebrity

**CAROL HAYES**  
**MANAGEMENT**  
CREATIVE ARTIST & STYLE MANAGEMENT

020 7482 1555

[www.carolhayesmanagement.co.uk](http://www.carolhayesmanagement.co.uk)



**Aga Dobosz**  
 Makeup Artist  
 Celebrity

**CAROL HAYES**  
**MANAGEMENT**  
 CREATIVE ARTIST & STYLE MANAGEMENT

020 7482 1555

[www.carolhayesmanagement.co.uk](http://www.carolhayesmanagement.co.uk)



FINN JONES RELAXES  
BEST WITH LENTILS  
COLLAR BY M&S

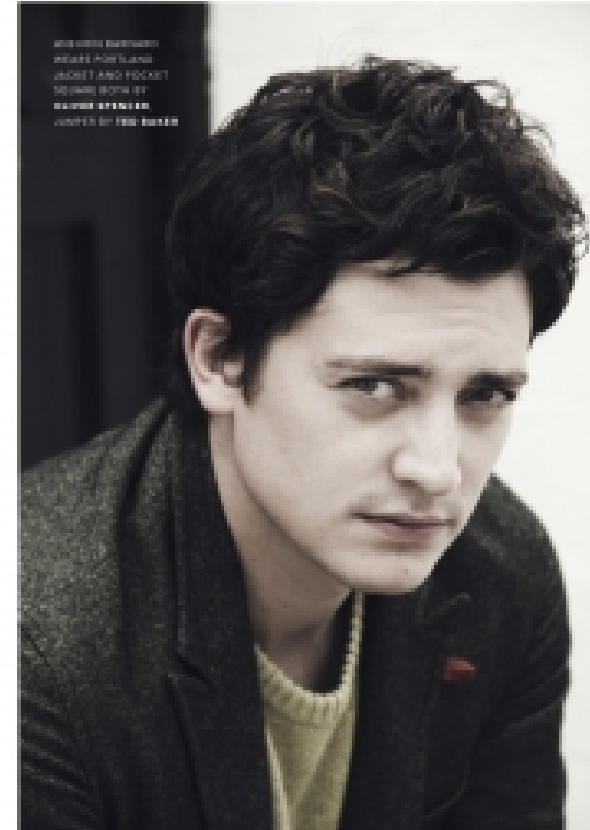
## FINN JONES

I've never really been one to look up or mimic - it's hard to draw inspiration from other actors, actors work in illusions - to follow or want to imitate them isn't always best the route. I do however have other inspirational characters in my life, usually they take form as writers, thinkers and musicians. In particular at the moment I love reading and listening to Joseph Campbell. He's a complete revelation and also an actor for Hera's Journey narrative and work on mythology really help me find substance in what I do.

Always when I encounter a role I bring as much of myself into the character as possible, in result of that the lines do start to blur all what's who. Not in a massive way, just subtly - certain unconscious traits. Playing a character such as Lancel Lofgren for five years, certainly rubs off on you.

SHIRT BY TOMMY HILF (M&S)

FEATURE



ANEURIN BARNARD  
RELAXES WITH LENTILS  
JACKET AND SWEATER  
BY M&S  
COLLAR BY M&S

## ANEURIN BARNARD

Memories and past events have made me who I am today. Top of the list is I have a wonderful family - they have always been there for me through thick and thin, kept me grounded and drove me on. They are the reason I am where I am today. They never pushed me, only ever supported me, and I am their greatest fear! Outside of acting my ambitions are to have a family of my own. Have a family home. Travel with my loved ones. Of course experience as much as the world can offer. But ultimately a simple life surrounded by my loved ones.

Very simply, my favourite movie is 'Great writers as you wish to be treated', I strongly believe in respect.

THE BURNING OF THE BURNING (M&S)  
THE BURNING OF THE BURNING (M&S)

FEATURE

## MATTHEW BEARD

I've played a few real people and it's always daunting. On the one hand your back-story and character details are all there fleshed out and waiting for you, but on the other you have a responsibility to that a story and details and always risk upsetting the real person or their family if you take away from them.

Normally I only do stuff that impacts me personally. I'm not professional enough to treat it as just a job - I have to care. When I turned the last page of The Imitation Game I was so moved and angered by what had happened to Alan Turing that pit of the stomach feeling stayed with me every day on set. In a US TV show called Rogue I played an American psychopathic murderer from a mafia family with a huge gift, bright red socks and an addiction to lip balms. I think that was the closest I've been to myself. Take from that what you will.

THE IMITATION GAME (ON THEATRE NOW)  
DEPART (BROADCAST FROM JANUARY 2015)



MATTHEW BEARD  
ON THE  
THE IMITATION GAME  
DEPART (BROADCAST FROM JANUARY 2015)

FEATURE



DIARMUID NI MAOLDOMHAIGH  
WILSON (BROADCAST FROM JANUARY 2015)  
DEPART (BROADCAST FROM JANUARY 2015)

## DIARMUID NI MAOLDOMHAIGH

There's always an element of pressure when you take on a role where the character is already known from successful books or films but largely I feel very assured. It's just that thing of trust in the material, we're all there because of the strength of the base material. As an actor you are hired to interpret a character in a certain way but most importantly you are hired to deliver it in a way that people will enjoy. There has to always be a freedom for inspiration, to let loose, to deliver something the way the actor sees it and a way that is interesting to you.

The first system that went to mind for aspiring actors - Theatre to TV to film - has all gone to the wayside now. It's a far more malleable experience now. I still think theatre will always be the real grounding of an actor. It's the place where actors really cut their teeth. I was lucky enough that the drama school I went to had a focus on stage craft. Whilst screen craft is an entirely in itself, I think with a beginning in theatre an actor is far better equipped with the emotional questions, the staging questions, and added confidence the stage and a live audience brings.

THE IMITATION GAME (ON THEATRE NOW)  
DEPART (BROADCAST FROM JANUARY 2015)

FEATURE



010 00

# PROFILE

INTERVIEW AND TEXT BY TOM SPRATT

PHOTOGRAPHY: STEVE CHENG  
STYLING: JESSICA TUNNEY  
HAIR: ANDREW L. BOWEN  
MAKEUP: AGA DOBOSZ (AGAS MAKEUP & SKINCARE)  
STYLING ASSISTANT: KAREN CHENG

## ED SPELEERS

If I were asked to play any film character from the past I would struggle to answer. Historically there have been some amazing performances portrayed on screen that I've been blown away by. But to single one of those out, and then to say what I would do differently, is almost sacrilege. There are of course performances you see and say to yourself 'that is a dream role', for example, Paddy Considine's Richard in *Dead Man's Shoes*, De Niro's Jake La Motta in *Raging Bull* or Paul Newman's Luke in *Cool Hand Luke*, are all spectacular roles. But to say you would want to play them, or worse, do them differently would be wrong on so many levels. I think it's like admiring an artist's painting and wanting to break the canvas and do it yourself and fail miserably.

In terms of the inspiration behind my career, Paul Newman is someone I admire hugely. He is magical, charming and captivating on screen. Everything from *Cat on a Hot Tin Roof* to *From Here to Eternity* in his later years is phenomenal. But I think you have to make your own journey in this industry and while I strongly believe you can admire other peoples work I don't think it's right to want to mimic someone's career. No two people are the same so you can only concentrate on yourself as an actor and learn to improve your own skill set.

WOLF HALL, 0022 JANUARY 2015  
REMAKE (2015)

FEATURES



ED SPELEERS WEARS  
POLKA DOTTS SHIRT BY  
AGAS MAKEUP & SKINCARE  
BY TOM SPRATT

**Aga Dobosz**  
Makeup Artist  
Celebrity

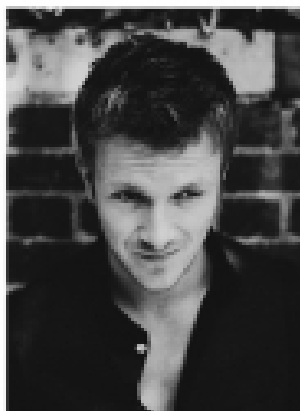
**CAROL HAYES**  
**MANAGEMENT**  
CREATIVE ARTIST & STYLE MANAGEMENT

020 7482 1555  
[www.carolhayesmanagement.co.uk](http://www.carolhayesmanagement.co.uk)





## BUTTERFIELD AND SWANSON, NEW FALLS, CANADA



In the context of his entry into the industry, the operative word for Charlie would be unconventional. Looking to him detail his angry story making the leap from starting a sales career at Winston-Salem to a job in Tallahassee, Jay Moon is so indicative of his outlandish confidence and penchant for reflection as it is of his laid-back, free life philosophy. "I was out at Winston for the second time for the 6th season and I was a fast driver. I used to do these long jaunts out into the mountains, 100 miles from Asheville. It was a very, very beautiful out-of-control experience. I would take out youngsters out to Blue Ridge resorts along a log road on six inches of snow in pitch-black stormy weather. I had some great experiences along those roads, and ones kind of same to me. It was at that point I would think: 'What are you going to do with your life? What are you going to do?' And it was really coming down on me like a ton of bricks, 'You need to do something.' And, it was only then that I really embraced the outdoors in my equations. I just added everything up and nothing was it. It just showed me so much freedom and so much time and learning experienced, and so much incredible human aspiration. And it was just a matter of you know grinding some trails and going and doing it, and that was the hardest part. Really, 'You just get 'em on some trail-me of some me'."

The question beckoning for Charlie at this point in his career is how to direct his energy now that he has dominated motion enough within L.A. within the industry. How to travel the resources of his time and talent between television and film. How to delineate himself within those mediums: leading man? Supporting actor? The answer looks to lie in a myriad of possibilities. Besides his upcoming appearance on the television series *Baywatch*, Charlie has been busy fulfilling a very different kind of role on his next project, which is currently in pre-production, a film called *Thunder Road* for which he will have a role and where he is also acting as a producer.

Following the breadth of Charlie's journey, from a physical, emotional, and a professional perspective, what holds true is the malleability of any path, no matter the origin, the destination, or the vehicle. As the expression goes, "It's not about the destination, it's about the journey." Charlie emphasizes, "Those 28 years I had before I read an actor and instrumentally, I don't know why, but doing theater seemed a stretch to me, and I probably made it look a stretch on TV or on film (laughs), but trust me, the great thing about my career is that I always knew there's going to be better to come. I think you're born with edges here and there, but really I think it's how you experience life and how you follow the path presented to you that makes you great, and this is at least what's happened to me. I've been very organic about the way that I have followed life, I have followed the path of least resistance in a way to be fair, but now the hard work starts. I realize that I always can learn more, there is never an endpoint, and that's what life is, you are never the finished article, you can never rest on your laurels in just impossible, otherwise, the day you stop learning is the day you die."

The question beckoning for Charlie at this point in his career is how to direct his energy now that he has dominated motion enough within L.A. within the industry. How to travel the resources of his time and talent between television and film. How to delineate himself within those mediums: leading man? Supporting actor? The answer looks to lie in a myriad of possibilities. Besides his upcoming appearance on the television series *Baywatch*, Charlie has been busy fulfilling a very different kind of role on his next project, which is currently in pre-production, a film called *Thunder Road* for which he will have a role and where he is also acting as a producer.

CHAS. E. BURNETT IN LONDON PHOTOGRAPHED BY HARRY CRONIN

© 2004 Blackwell Publishing Ltd *Journal of Internal Medicine* 255: 103–110



© 2000 by  
JAMES H. HARRIS, JR.

**CAROL HAYES**  
**MANAGEMENT**  
CREATIVE ARTIST & STYLE MANAGEMENT

[www.carolhayesmanagement.co.uk](http://www.carolhayesmanagement.co.uk)





STYLING: JESSIE WILSON  
HAIR: JESSIE WILSON  
MAKEUP: AGA DOBOSZ  
GROOMING: OLIVER STRECHER

## SAM REID

I am currently shooting a miniseries, *The Astronauts wives club* for ABC in the states with Lane Tikeling - who I worked with on *The Hot Chick* last year, I'm playing astronaut John Glenn who is a very different character to the riot club boys so it's wonderful to be exploring a totally different universe with her again.

I'm playing a real man right now, who is still alive and an important figure for a whole generation of people, at times that can be daunting because you don't want to disappoint the audience - particularly if they have expectations of how this person may have conducted their life, but in the end I think you have to serve the story first and sometimes that means sacrificing the truth for the sake of honouring the narrative. Personally I love history, I've learnt so much being an actor, researching different periods of time, and the way we lived - it's a great way of finding the character, real or fictional.

COMED BY: DOMINIC MONAGHAN  
ASTRONAUTS WIVES CLUB, ABC (2018)  
DESIGNED THE FUTURE FROM LONDON

## ROSIE ANDERSON

For me it is always important find parallels between my character and myself. The more common ground, the more I can relate to, the better - it makes my character more human. If an audience doesn't care, what's the point? The best villains are the ones who make you care about them in some way, who make you question your own morality. Fiona, my character in *The Silent Storm*, is a young man wanting to break free from society, in search of something more. He's a ball of energy in need of someone to show it, I can totally relate to that.

When I think about some of style there's a couple that have always appealed to me. I love Marlon Brando's effortlessly cool style. He didn't try too hard. He dressed like a man and just had it. And then further back, when men dressed properly, like gentlemen, and more great cut suits. Pastime and clapper. Even if they were just ripping out for a girl of milk.

STYLING: JESSIE WILSON  
THE SILENT STORM (2018)  
MUSIC: JESSIE WILSON



STYLING: JESSIE WILSON  
HAIR: JESSIE WILSON  
MAKEUP: AGA DOBOSZ  
GROOMING: OLIVER STRECHER







The only way to see the show is to go to the box office, which is located at the top of the page. The box office is open from 10:00 AM to 7:00 PM. The show is a full-length production, and it is a great way to see the show. The show is a full-length production, and it is a great way to see the show. The show is a full-length production, and it is a great way to see the show.

[illegible]

© 2007 by the author. All rights reserved. No part of this publication may be reproduced, stored in a retrieval system, or transmitted, in any form or by any means, electronic, mechanical, photocopying, recording, or by any information storage or retrieval system, without the prior written permission of the author.

Copyright © 2004 John Wiley & Sons, Ltd.

The following information is being given to you for your information:



"We didn't make a review of the EP and it's like they didn't catch it at all," sigh Samuels (judged out of Oslo area, June 1999). "They caught some hits, but the first part is actually about rape and it didn't seem like [the reviewer] caught it at all. It seems like, 'Oh, we're making songs about someone we're in love with.' It'd be nice to assume the three amphetamine warriors — school friend Linsagard, Tommas Grongmyr and Johannes Nævre Corstam — might try about subjects just as great. Their first EP 'The New World', released in early November, was partly put from some samples of hardcore electronic beats, a satirical cyber-world with busy words.

"Everything happened randomly without any goal to sound like something," Grongmyr explains. Both of their flight to London, the club refuse to be pinned down by labels or genres during his conversation, despite my best efforts. With labels between them for electronics, Ekstrem just an old school pop, June 1999 are disapproving, and the same sense of fluidity runs throughout the EP *Opening with 'Samurai You Up'*, it loosely addresses the boundary of race and class and language in its musical intensity in the cross-

While the impetus of "Do You Feel" seems to prioritize series of lyrics, the three want to use their — small, but growing — platform to bring light to difficult subjects, even if the original intent of their songs is lost in interpretation. "It makes a dialogue about the subjects that consumers can't say," says Orellana, "usually, instead of nature, instead of women, instead of native people — as long as we get debate, that's more than we could ask for." Geographic continues, "If you have a bunch of people who don't care and are all about money and fame and don't bring light to anything, you'll have a lot of normal people who look up to them and are the same way." Since 2009 has balanced conflicts, especially with political debate and the result is an intriguing debate of relevance.

"We're winners," Orellana promises, before Geographic explains: "The music comes out of what."

"We can't grow up," Lindqvist concludes, quite rightly. "It's a relief, but it's a

Photography: JACOB MINTO; Fashion: JEFFREY M. FORD; Models: JACOB MINTO

**Aga Dobosz**  
Makeup Artist  
Celebrity

**CAROL HAYES**  
**MANAGEMENT**  
CREATIVE ARTIST & STYLE MANAGEMENT

020 7482 1555

[www.carolhayesmanagement.co.uk](http://www.carolhayesmanagement.co.uk)





**Aga Dobosz**  
Makeup Artist  
Celebrity



**CAROL HAYES**  
**MANAGEMENT**  
CREATIVE ARTIST & STYLE MANAGEMENT

020 7482 1555

[www.carolhayesmanagement.co.uk](http://www.carolhayesmanagement.co.uk)



**Aga Dobosz**  
Makeup Artist  
Celebrity



**CAROL HAYES**  
**MANAGEMENT**  
CREATIVE ARTIST & STYLE MANAGEMENT

020 7482 1555

[www.carolhayesmanagement.co.uk](http://www.carolhayesmanagement.co.uk)

# COUNTRY LIFE

VOL CXXIII NO 10, DECEMBER 12/19, 2018



*Joseph and Sabine Getty with their daughter, Gene*

*Joseph is a fund manager and the founder of Getty Capital;  
Sabine is a jewellery designer and the founder of her eponymous brand.*

**Aga Dobosz**

Makeup Artist  
Celebrity

**CAROL HAYES**  
**MANAGEMENT**  
CREATIVE ARTIST & STYLE MANAGEMENT

020 7482 1555

[www.carolhayesmanagement.co.uk](http://www.carolhayesmanagement.co.uk)